

Annex 3  
Coastal figures

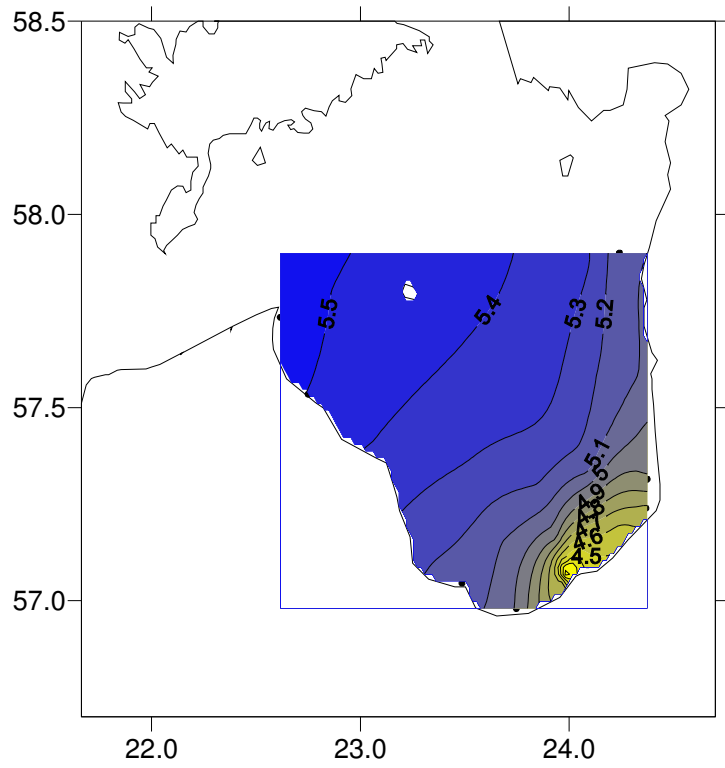
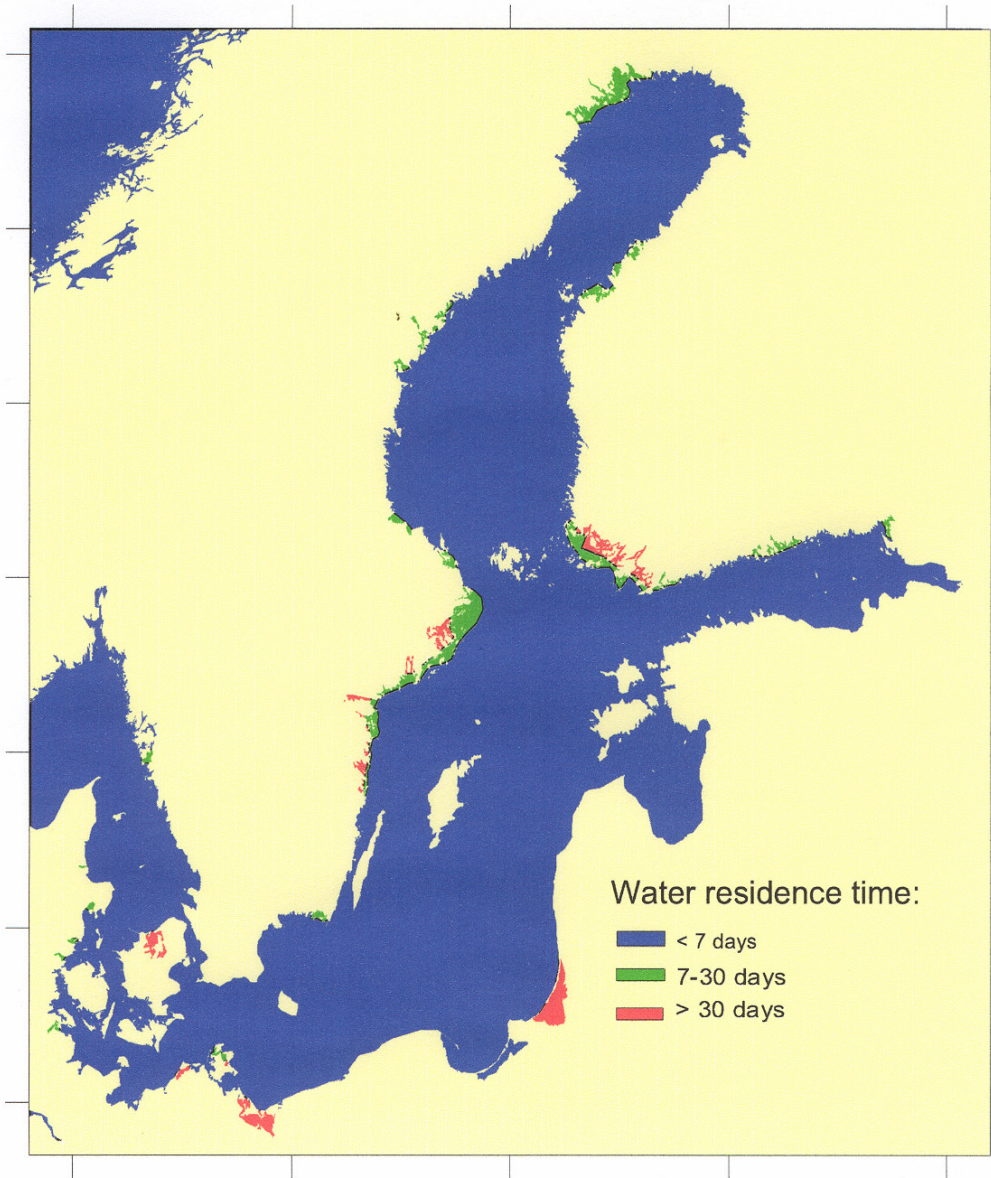


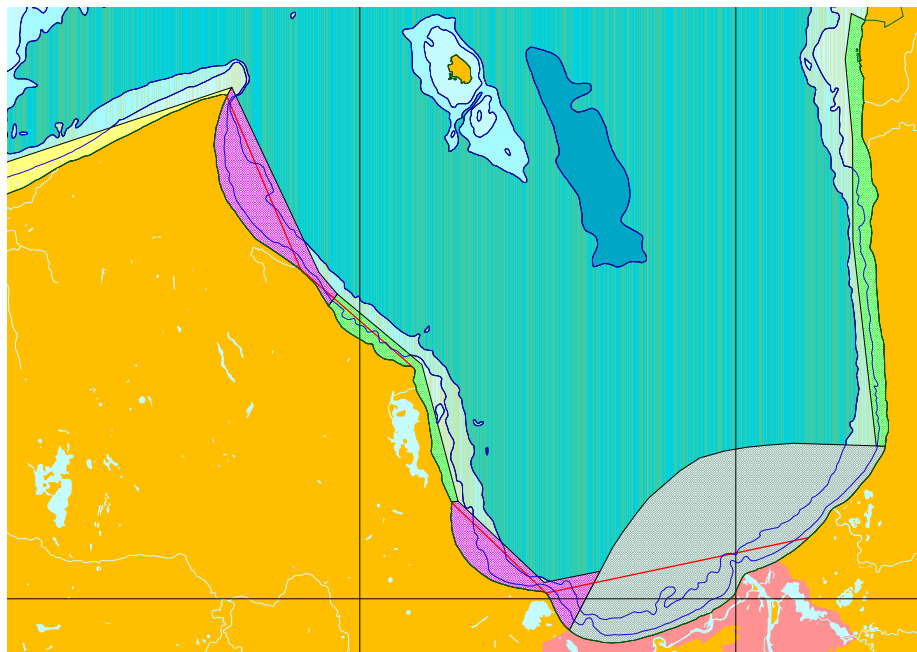
Figure 1. Mean annual surface layer (0-10m) salinity in the Gulf of Riga part covered by Latvian marine environmental monitoring programme, data of 1993- 2002.

Spatial distribution of water residence time as estimated by CHARM WP1 (Typology) (Sjöberg, 2003).



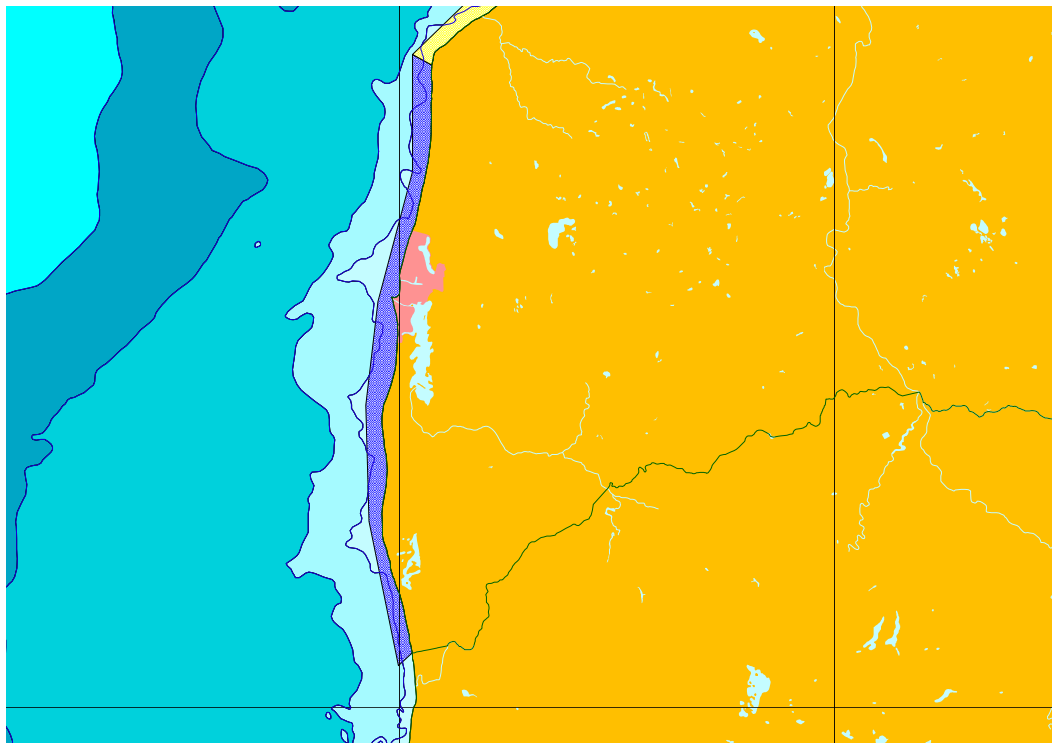
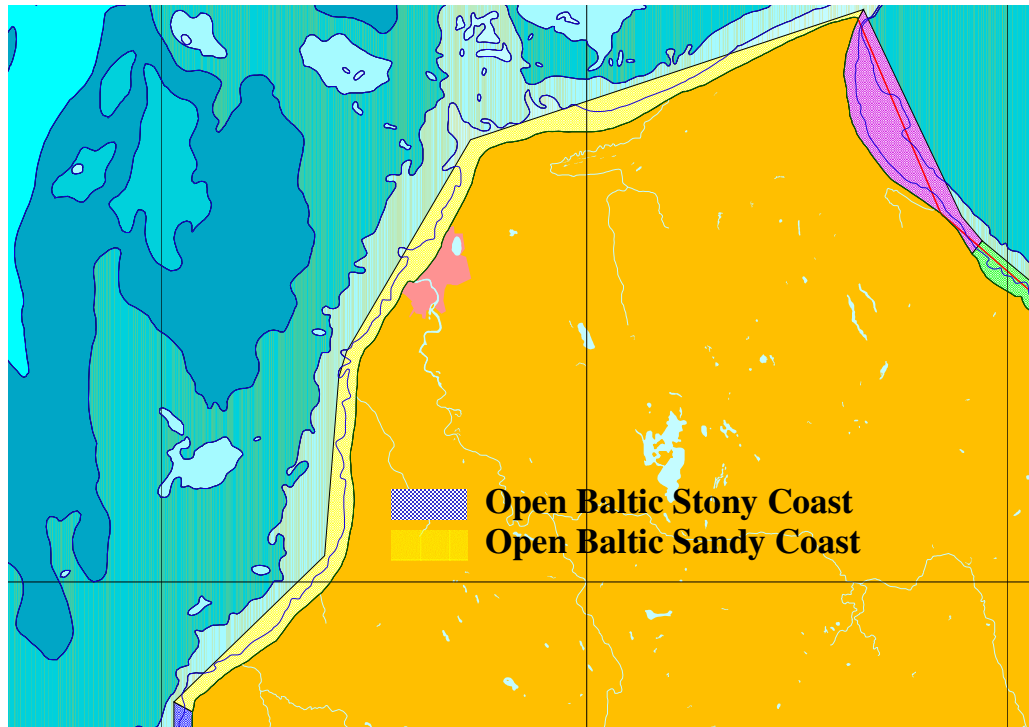


Graphical representation of transitional and coastal water bodies in the Latvian part of the Gulf of Riga.



- Gulf of Riga Sandy Coast**
- Gulf of Riga Stony Coast**
- Gulf of Riga transitional water**

Graphical representation of transitional and coastal water bodies in the Latvian part of the open Baltic Sea.



Summary of Latvian coastal water typology.

	Salinity (PSU)	Depth (m)	Wave exposure	Mixing	Residence time (d)	Substratum	Ice coverage (d)
South-eastern exposed Sandy coast	6<18-20	<30	exposed	perm.full	<7	sand-gravel	Irregular
South-eastern exposed Stony coast	6<18-20	<30	exposed	perm.full	<7	cobble	Irregular
Gulf of Riga Sandy Coast	0.5 < 6	<30	moderately exposed	perm.full	<7	sand-gravel	Irregular
Gulf of Riga Stony Coast	0.5 < 6	<30	moderately exposed	perm.full	<7	cobble	Irregular