



Interreg

Latvija-Lietuva

European Regional Development Fund



EUROPEAN UNION

Joint management of Latvian – Lithuanian trans-boundary river and lake
water bodies (TRANSWAT) LLI-533

TRANSBOUNDARY LAKES WATER LEVEL DATA SERIES

2022



Table of contents

I. INTRODUCTION	3
II. WATER LEVEL MONITORING IN THE PROJECT LAKES	4
2.1. Ilzu (Garais)/Ilge lake.....	4
2.2. Galinu/Salna Lake.....	5
2.3. Kumpinisku/Kampiniskiai Lake	7
2.4. Lauceses/ Laukesas Lake	8
2.5. Skirnas Lake	9
III. CONCLUSION	11
ANNEX	12

Abbreviations

LT	Lithuania
LV	Latvia
LEGMC	Latvian Environment, Geology and Meteorology Centre
LAS	European Vertical Reference System (EVRS) in Latvia
LAS07	European Vertical Reference System (EVRS) in Lithuania

This document has been produced with the financial assistance of the European Union. The contents of this document are the sole responsibility of project partners and can under no circumstances be regarded as reflecting the position of the European Union.

I. INTRODUCTION

Water level measurements were carried out in the frame of the “Joint management of Latvian – Lithuanian trans-boundary river and lake water bodies” project (TRANSWAT) LLI-533 financed by the Interreg V-A Latvia–Lithuania Programme 2014-2020.

Water level is one of the main parameters that characterise the hydrological regime of rivers, lakes and others water bodies. Natural water level regime mostly depends on the regional climate (air temperature, precipitation and evaporation) and on the ground water’ rate in the feeding of water body. Knowledge about water level regime of lakes is important for the efficient water Management.

Lake water level regime and it changes along a year is essential for the assessment of the ecological status of lakes as well as for lake ecosystem health assessment.

Ilzu (Garais)/Ilge, Galinu/Salna, Kumpinisku/Kampiniskiai, Lauceses/ Laukesas and Skirnas lakes water level fluctuation in 2021-2022 (differs for LT and LV due to date of data logger installation) is described in this Report.

II. WATER LEVEL MONITORING IN THE PROJECT LAKES

Water level data loggers were installed in 5 transboundary lakes in December 2020 (LT) and in March 2021 (LV). Collected hourly water level data were analysed and water level daily data for the each pilot lake were calculated.

2.1. Ilzu (Garais)/Ilge lake

Water level data logger was installed in the North-eastern part of lake (Fig. 2.1.1) in the March 2021. Hourly data collected in the CLIDATA database of Latvian Environment, Geology and Meteorology Centre (LEGMC).

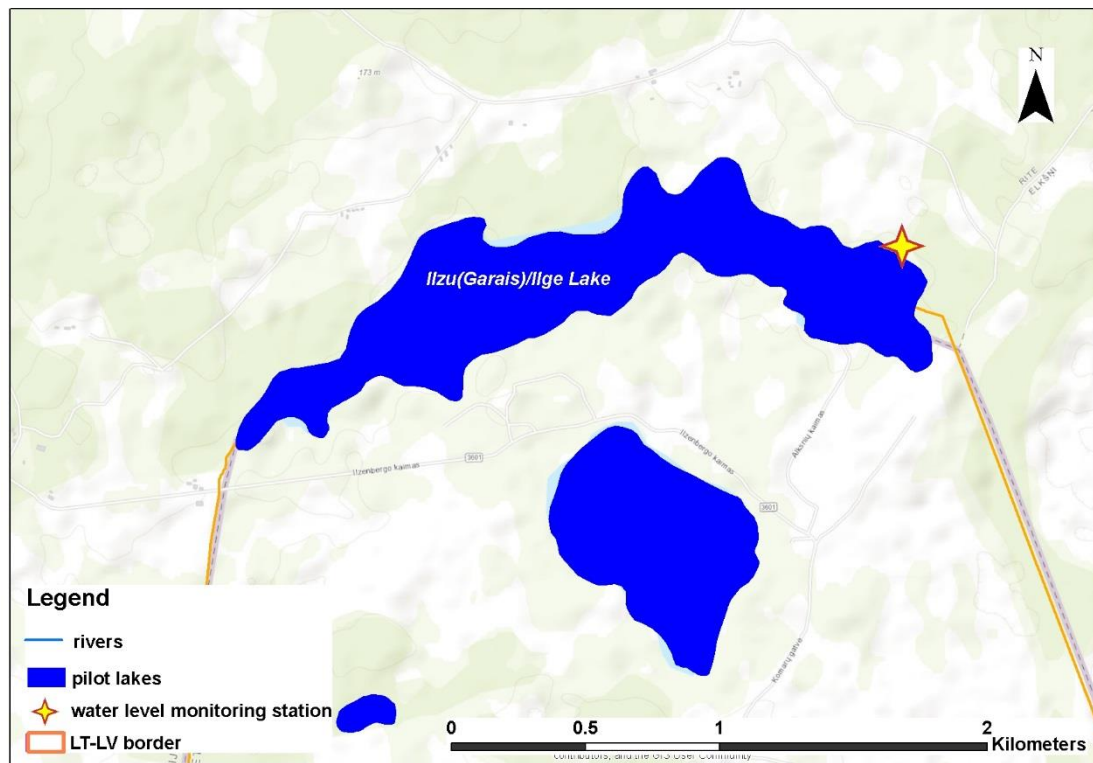


Figure 2.1.1. Water level monitoring station on Ilzu (Garais)/Ilge Lake

The water data loggers were set to measure every hour, taking into account possible water level changes in the natural lakes. Figure 2.1.2 illustrates the water level fluctuations in the Ilzu (Garais)/Ilge Lake in 2021 – beginning of 2022. Warm and rainy November of 2021 caused the water level rising in the end of the year.

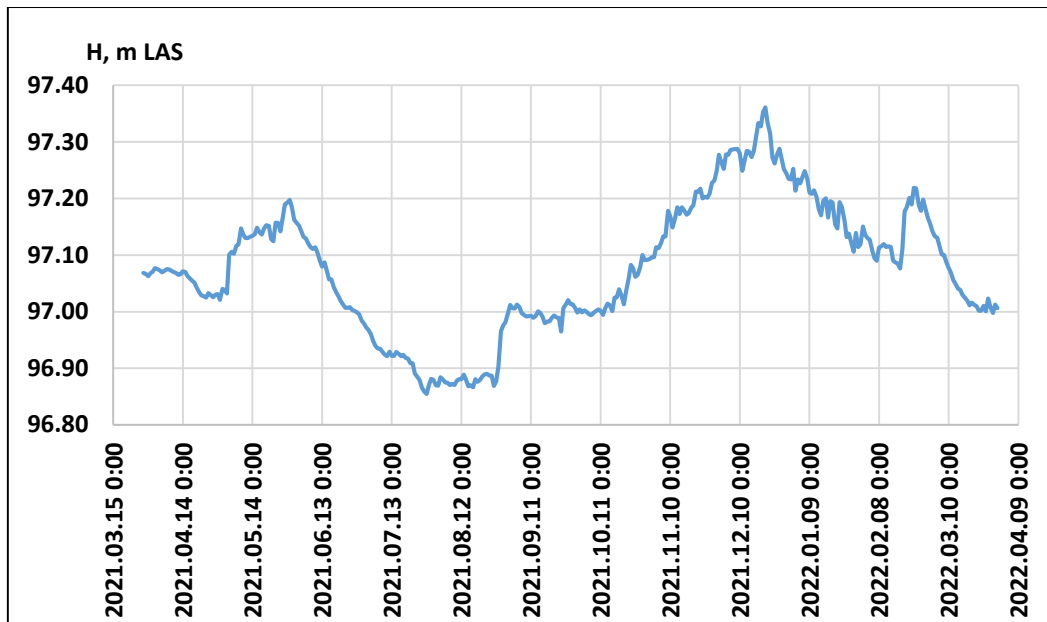


Figure 2.1.2. Ilzu (Garais)/Ilge Lake water level fluctuations in April 2021 – March 2022

The water levels amplitude in the period of monitoring was 52 cm. Max water level 93.37 m LAS was observed in 20 December 2021, min 96.85 m LAS – in July 27. The water levels amplitude in the period of monitoring was 52 cm. Max water level 93.37 m LAS was observed in December 20, min 96.85 m LAS – in July 27. In the Table 1 of ANNEX there is the water level data of the Ilzu (Garais)/Ilge Lake.

2.2. Galinu/Salna Lake

Water level data logger was installed in the North-eastern part of lake (Fig. 2.2.1) in the end of March 2021. Data collected in the CLIDATA database of LEGMC.

Hourly data were measured in the Galinu/Salna Lake. Figure 2.2.2 illustrates the water level fluctuation in the period of April 2021 – January 2022. Warm and rainy November of 2021 caused the water level rising in the end of the year. In the cold December all pilot lakes were frozen, and high water remained under ice cover.

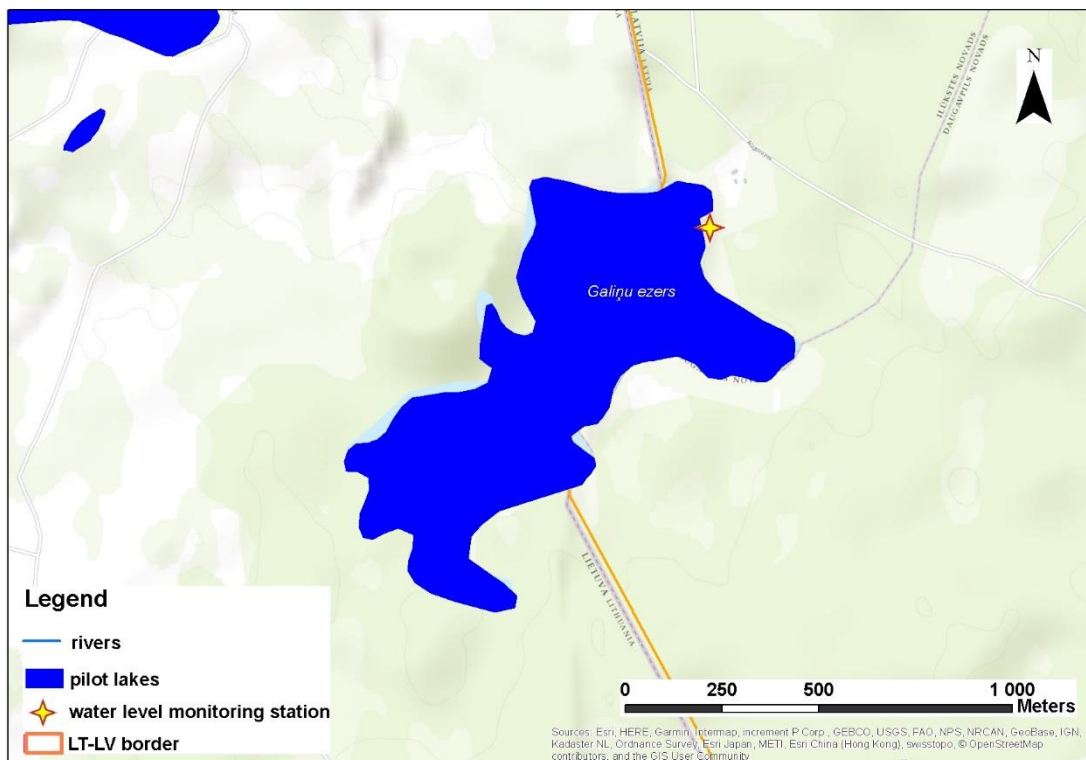


Figure 2.2.1. Water level monitoring station on Galinu/Salna Lake

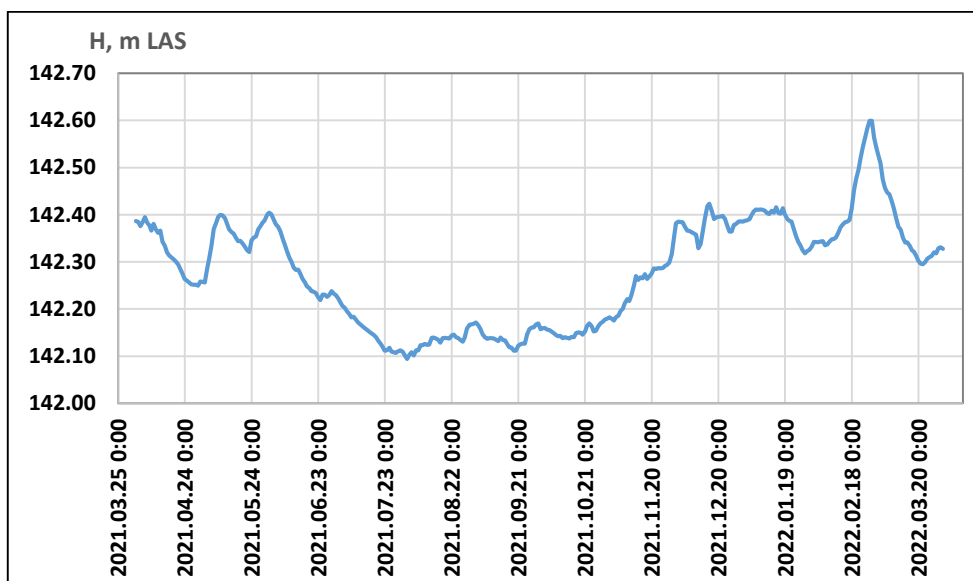


Figure 2.2.2. Galinu/Salna Lake water level fluctuations in April 2021 – March 2022

The water levels amplitude in the period of monitoring was 35 cm. Max water level 142.60 m LAS was observed in 27-th February but min water level 142.09 m LAS – in 1-st August. In the Table 2 of ANNEX there is the water level data of the Galinu/Salna Lake.

2.3. Kumpinisku/Kampiniskiai Lake

Water level data logger was installed in the North-eastern part of lake (Fig. 2.3.1) in the end of March 2021.

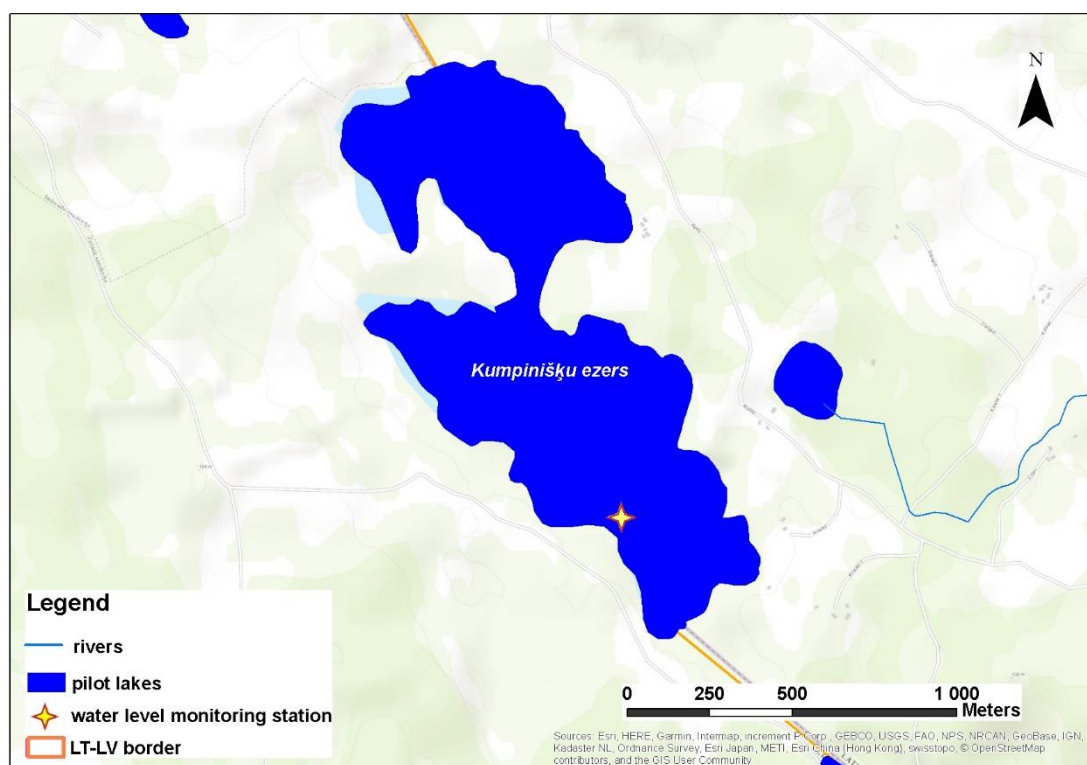


Figure 2.3.1. Water level monitoring station on Kumpinisku/Kampiniskiai Lake

Lake water level was measured every hour. Figure 2.3.2 illustrates the water level fluctuation in the period of December 2020 – March 2022. Warm and rainy November of 2021 caused the water level rising in the end of the year. In the cold December all pilot lakes were frozen, and high water remained under ice cover. Snow melting in the middle of February 2022 led the winter flood in the lake.

The water levels amplitude in the period of monitoring was 46 cm. Max water level 135.24 m LAS07 was observed in 23-24 February of 2022 but min water level 134.78 m LAS – in 9-th October of 2021. In the Table 3 of ANNEX there is the water level data of the Kumpinisku/Kampiniskiai Lake.

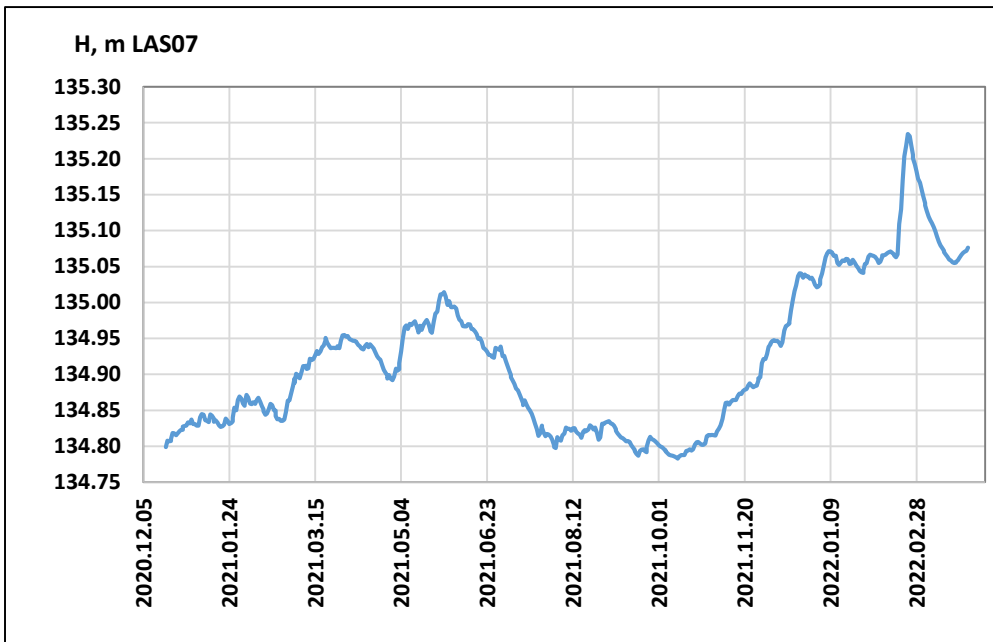


Figure 2.3.2. Kumpinisku/Kampiniskiai Lake water level fluctuations in December 2020 – March 2022

2.4. Lauceses/ Laukesas Lake

Water level data logger was installed in the South-western part of lake (Fig. 2.4.1) in the middle of December 2020.

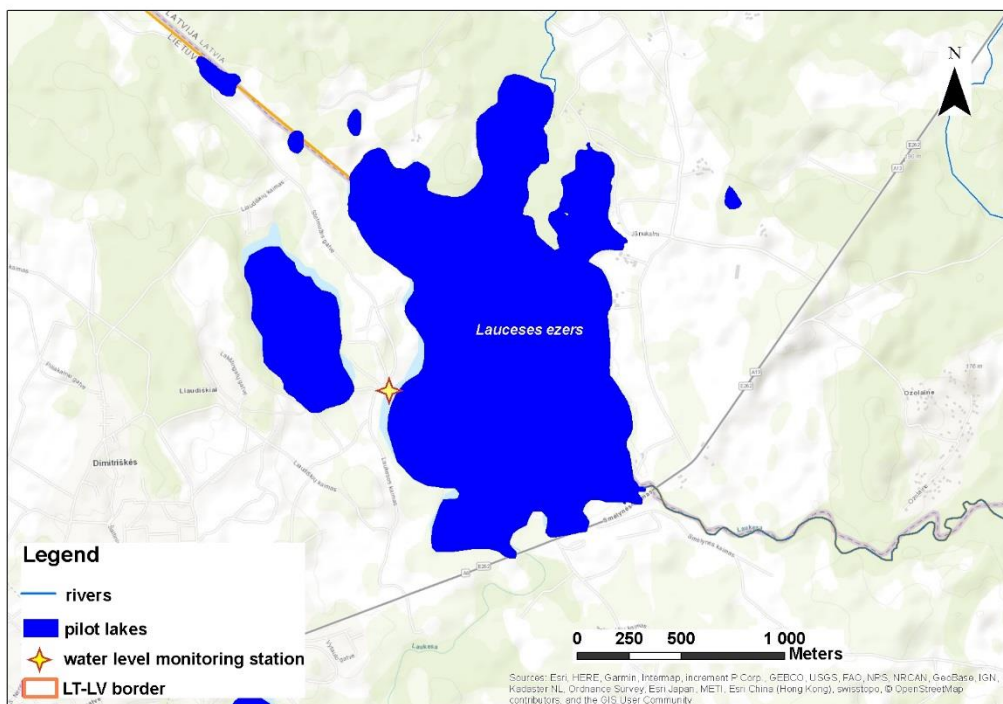


Figure 2.4.1. Water level monitoring station on Lauceses Laukesas Lake

Lake water level was measured every hour. Figure 2.4.2 illustrates the water level fluctuation in the period of December 2020 – March 2022. Warm and rainy November of 2021 caused the water level rising in the end of the year. In the cold December all pilot lakes were frozen, and high water remained under ice cover. Snow melting in the middle of February 2022 led the winter flood in the lake.

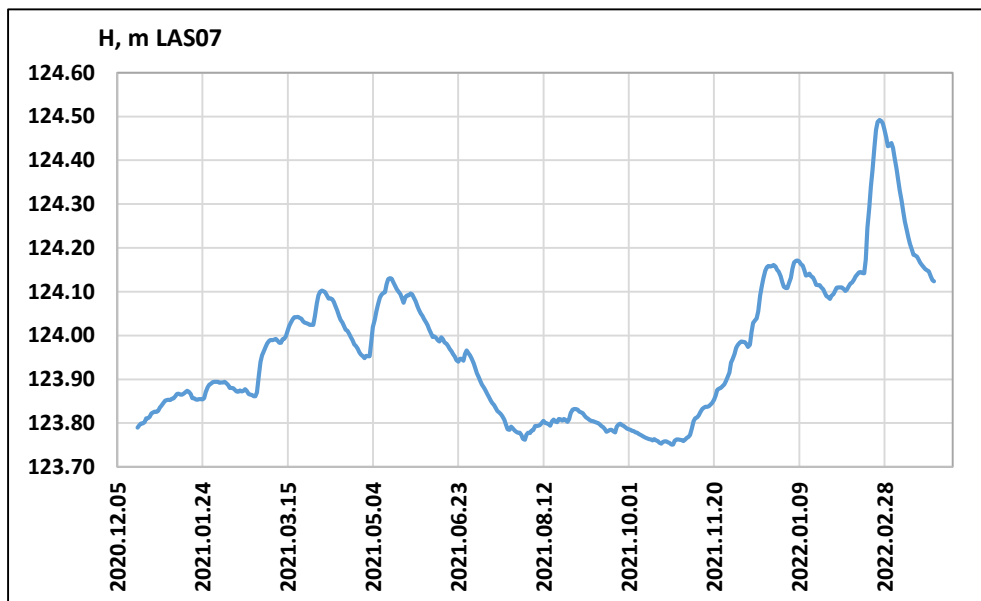


Figure 2.4.2. Lauceses Laukesas Lake water level fluctuations in December 2020 – March 2022

The water levels amplitude in the period of monitoring was 75 cm. Max water level 124.50 m LAS07 was observed in 25-th February of 2022 but min water level 123.75 m LAS – in 25-27 October of 2021. In the Table 4 of ANNEX there is the water level data of the Lauceses Laukesas Lake.

2.5. Skirnas Lake

Water level data logger was installed in the Northern part of lake (Fig. 2.5.1) in the end of March 2021.

Hourly data were measured in the Skirnas Lake and collected in the CLIDATA database of LEGMC. Figure 2.5.2 illustrates the water level fluctuation in the period of April 2021 – January 2022.

The water levels amplitude in the period of monitoring was only 26 cm. Max water level 143.22 m LAS was observed in 10-th May 2021 but min water level

142.96 m LAS – in 1-st August 2021. In the Table 5 of ANNEX there is the water level data of the Skirnas Lake.

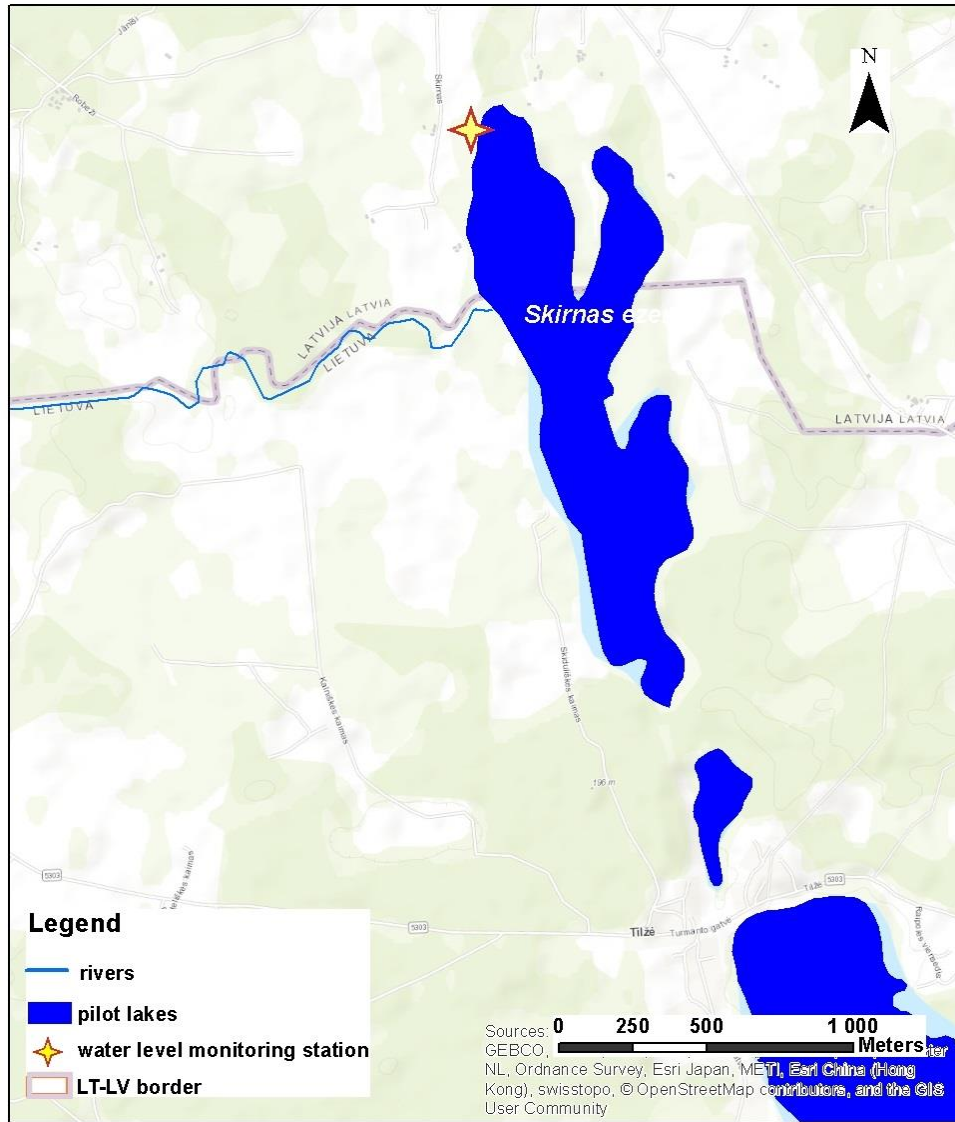


Figure 2.5.1. Water level monitoring station on Skirnas Lake

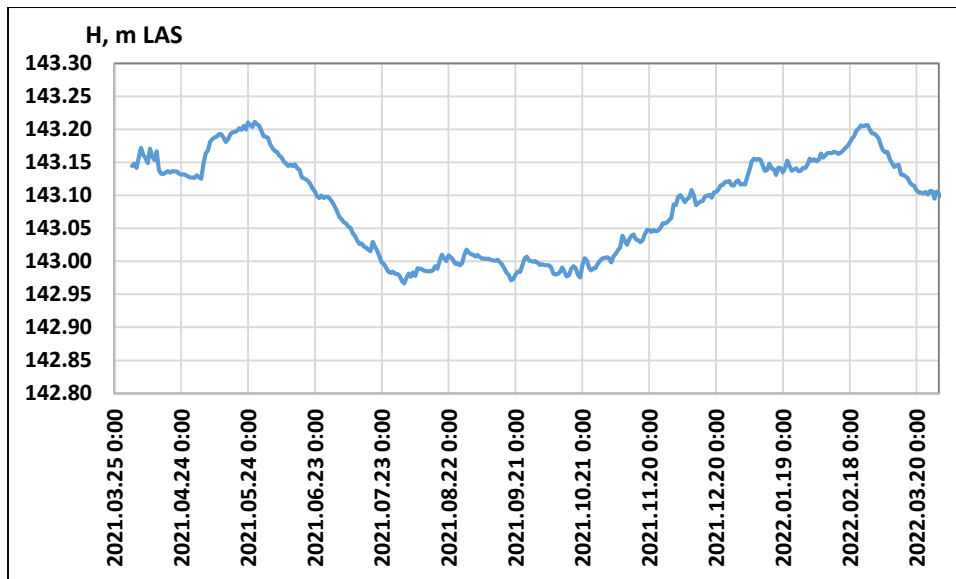


Figure 2.2.2. Skirnas Lake water level fluctuations in April 2021 – March 2022

III. CONCLUSION

On the pilot lakes 5 water level and water discharge data logger were installed in the period from December 2020 to March 2021 due to different procurement procedures in Latvia and Lithuania. However, short data series should be increased using the long one if the correlation coefficient of data series from the neighbouring lakes is sufficiently high (≥ 0.75).

All transboundary lakes are designated as water bodies in Latvia but only two of them (Laucesas/Laukesas and Kumpinisku/Kampiniskiai lakes) are the water bodies in Lithuania. However the state hydrological monitoring is not provided on these lakes in both countries. Hence measured water level data will be very useful.

Table 1. Ilzu (Garais)/Ilge Lake water level daily data, m (sensor elevation - 96.135 m LAS)

Date	2021										2022		
	III	IV	V	VI	VII	VIII	IX	X	XI	XII	I	II	III
1		97.08	97.04	97.16	96.97	96.87	97.01	97.00	97.10	97.27	97.25	97.15	97.17
2		97.08	97.03	97.15	96.97	96.88	97.01	97.00	97.10	97.25	97.21	97.14	97.15
3		97.07	97.10	97.14	96.96	96.88	97.01	97.00	97.11	97.28	97.23	97.13	97.14
4		97.07	97.11	97.13	96.95	96.88	97.01	97.00	97.11	97.28	97.23	97.13	97.13
5		97.07	97.10	97.13	96.94	96.87	97.01	97.00	97.12	97.29	97.24	97.11	97.13
6		97.08	97.12	97.12	96.94	96.87	97.00	96.99	97.13	97.29	97.25	97.09	97.12
7		97.07	97.12	97.11	96.93	96.87	96.99	97.00	97.13	97.29	97.23	97.09	97.10
8		97.07	97.15	97.11	96.93	96.87	96.99	97.00	97.18	97.29	97.21	97.11	97.10
9		97.07	97.14	97.11	96.92	96.88	96.99	97.00	97.17	97.28	97.21	97.12	97.09
10		97.07	97.13	97.10	96.92	96.88	96.99	97.00	97.15	97.25	97.21	97.12	97.08
11		97.06	97.13	97.09	96.93	96.88	96.99	96.99	97.16	97.27	97.20	97.11	97.07
12		97.07	97.13	97.08	96.92	96.89	96.99	97.01	97.18	97.28	97.18	97.12	97.06
13		97.07	97.13	97.09	96.92	96.88	97.00	97.01	97.17	97.28	97.17	97.11	97.05
14		97.07	97.14	97.07	96.93	96.87	97.00	97.01	97.18	97.27	97.20	97.09	97.04
15		97.06	97.15	97.06	96.93	96.87	96.99	97.00	97.18	97.28	97.20	97.09	97.04
16		97.06	97.14	97.06	96.92	96.87	96.98	97.02	97.17	97.31	97.17	97.09	97.03
17		97.05	97.14	97.04	96.92	96.88	96.98	97.03	97.17	97.33	97.20	97.08	97.02
18		97.05	97.15	97.03	96.92	96.88	96.98	97.04	97.18	97.33	97.19	97.11	97.02
19		97.04	97.15	97.03	96.92	96.88	96.99	97.03	97.19	97.35	97.15	97.18	97.01
20		97.03	97.15	97.02	96.91	96.89	96.99	97.01	97.21	97.36	97.15	97.18	97.02
21		97.03	97.13	97.01	96.91	96.89	96.99	97.04	97.21	97.33	97.19	97.20	97.01
22		97.03	97.12	97.01	96.89	96.89	96.99	97.06	97.22	97.31	97.18	97.19	97.01

23		97.02	97.16	97.01	96.88	96.89	96.96	97.08	97.20	97.27	97.16	97.22	97.00
24		97.03	97.16	97.01	96.88	96.89	97.01	97.08	97.20	97.26	97.13	97.22	97.00
25		97.03	97.14	97.00	96.87	96.87	97.01	97.06	97.20	97.28	97.13	97.19	97.01
26	97.07	97.03	97.17	97.00	96.86	96.88	97.02	97.07	97.21	97.29	97.14	97.18	97.00
27	97.07	97.03	97.19	97.00	96.85	96.90	97.01	97.08	97.23	97.27	97.12	97.20	97.02
28	97.07	97.03	97.19	97.00	96.87	96.97	97.01	97.10	97.23	97.25	97.11	97.18	97.01
29	97.06	97.02	97.20	96.98	96.88	96.98	97.01	97.09	97.25	97.25	97.14		97.00
30	97.07	97.04	97.18	96.98	96.88	96.98	97.00	97.09	97.28	97.23	97.11		97.01
31	97.07		97.16		96.87	97.00		97.09		97.23	97.12		97.01

Table 2. Galinu/Salna Lake water level daily data, m (sensor elevation - 141.485 m LAS)

Date	2021									2022		
	IV	V	VI	VII	VIII	IX	X	XI	XII	I	II	III
1	142.39	142.26	142.40	142.22	142.09	142.17	142.16	142.18	142.39	142.39	142.34	142.54
2	142.38	142.26	142.39	142.21	142.10	142.17	142.16	142.18	142.38	142.39	142.34	142.53
3	142.38	142.28	142.38	142.21	142.11	142.16	142.16	142.18	142.38	142.40	142.34	142.51
4	142.38	142.31	142.37	142.20	142.10	142.15	142.16	142.19	142.37	142.41	142.34	142.47
5	142.39	142.33	142.36	142.19	142.11	142.14	142.15	142.20	142.37	142.41	142.34	142.46
6	142.38	142.37	142.35	142.19	142.11	142.14	142.15	142.20	142.37	142.41	142.33	142.45
7	142.38	142.38	142.34	142.18	142.12	142.14	142.14	142.21	142.36	142.41	142.34	142.44
8	142.37	142.40	142.32	142.18	142.12	142.14	142.14	142.22	142.36	142.41	142.34	142.43
9	142.38	142.40	142.31	142.18	142.13	142.14	142.14	142.22	142.36	142.41	142.35	142.41
10	142.37	142.40	142.30	142.17	142.12	142.14	142.14	142.23	142.33	142.40	142.35	142.39
11	142.36	142.39	142.29	142.17	142.12	142.13	142.14	142.25	142.34	142.40	142.35	142.37
12	142.37	142.38	142.28	142.16	142.14	142.14	142.14	142.27	142.37	142.41	142.36	142.37
13	142.34	142.37	142.28	142.16	142.14	142.13	142.14	142.26	142.39	142.40	142.37	142.35

14	142.33	142.36	142.27	142.16	142.14	142.13	142.14	142.27	142.42	142.42	142.38	142.34
15	142.32	142.36	142.26	142.15	142.13	142.13	142.14	142.27	142.42	142.40	142.38	142.34
16	142.31	142.35	142.26	142.15	142.13	142.12	142.15	142.27	142.41	142.40	142.39	142.33
17	142.31	142.34	142.25	142.15	142.14	142.12	142.15	142.26	142.39	142.41	142.39	142.33
18	142.31	142.34	142.24	142.14	142.14	142.11	142.15	142.27	142.39	142.40	142.41	142.32
19	142.30	142.34	142.24	142.13	142.14	142.11	142.15	142.28	142.40	142.39	142.45	142.31
20	142.29	142.33	142.24	142.13	142.14	142.12	142.15	142.29	142.40	142.39	142.48	142.30
21	142.29	142.33	142.23	142.12	142.14	142.13	142.16	142.28	142.40	142.39	142.49	142.30
22	142.27	142.32	142.23	142.11	142.15	142.13	142.17	142.29	142.39	142.37	142.52	142.29
23	142.26	142.35	142.22	142.11	142.14	142.13	142.16	142.29	142.38	142.35	142.54	142.30
24	142.26	142.35	142.23	142.12	142.14	142.15	142.15	142.29	142.36	142.34	142.56	142.31
25	142.26	142.35	142.23	142.11	142.13	142.16	142.15	142.29	142.36	142.34	142.58	142.31
26	142.25	142.37	142.23	142.11	142.13	142.16	142.16	142.29	142.38	142.33	142.60	142.31
27	142.25	142.38	142.23	142.11	142.14	142.16	142.17	142.30	142.38	142.32	142.60	142.32
28	142.25	142.38	142.24	142.11	142.16	142.17	142.17	142.32	142.39	142.32	142.56	142.32
29	142.25	142.39	142.23	142.11	142.17	142.17	142.18	142.35	142.39	142.32		142.33
30	142.26	142.40	142.23	142.11	142.17	142.16	142.18	142.38	142.39	142.33		142.33
31		142.40		142.10	142.17		142.18		142.39	142.33		142.33

Table 3. Kumpinisku/Kampiniskiai Lake water level daily data, m (sensor elevation – 134.090 m LAS07)

Date	2020	2021												2022		
	XII	I	II	III	IV	V	VI	VII	VIII	IX	X	XI	XII	I	II	III
1		134.84	134.86	134.88	134.95	134.91	135.00	134.93	134.80	134.84	134.80	134.82	134.92	135.02	135.07	135.17
2		134.83	134.87	134.89	134.95	134.91	134.99	134.93	134.81	134.83	134.80	134.81	134.93	135.03	135.06	135.16
3		134.83	134.87	134.89	134.95	134.93	134.99	134.92	134.81	134.83	134.80	134.82	134.94	135.04	135.06	135.15
4		134.83	134.86	134.90	134.95	134.94	134.99	134.91	134.81	134.83	134.79	134.82	134.94	135.04	135.06	135.14

5		134.83	134.86	134.89	134.95	134.96	134.98	134.90	134.82	134.82	134.79	134.83	134.94	135.06	135.06	135.13
6		134.84	134.86	134.90	134.95	134.97	134.98	134.90	134.82	134.82	134.79	134.84	134.95	135.07	135.06	135.12
7		134.84	134.86	134.91	134.95	134.96	134.97	134.89	134.83	134.82	134.79	134.85	134.95	135.07	135.06	135.12
8		134.84	134.86	134.91	134.94	134.97	134.97	134.89	134.82	134.81	134.79	134.86	134.95	135.07	135.07	135.11
9		134.84	134.87	134.91	134.94	134.97	134.97	134.88	134.82	134.81	134.79	134.86	134.94	135.07	135.07	135.10
10		134.84	134.86	134.91	134.94	134.97	134.96	134.88	134.82	134.81	134.78	134.86	134.94	135.07	135.07	135.10
11		134.83	134.86	134.92	134.93	134.97	134.97	134.87	134.82	134.81	134.78	134.86	134.94	135.07	135.07	135.09
12		134.84	134.85	134.92	134.94	134.97	134.97	134.87	134.83	134.81	134.78	134.86	134.96	135.06	135.07	135.08
13		134.84	134.85	134.92	134.94	134.96	134.96	134.86	134.82	134.81	134.79	134.86	134.97	135.05	135.07	135.08
14		134.84	134.84	134.93	134.94	134.96	134.96	134.86	134.82	134.80	134.79	134.86	134.97	135.06	135.07	135.08
15		134.84	134.85	134.93	134.94	134.97	134.96	134.86	134.82	134.80	134.79	134.87	134.97	135.06	135.06	135.07
16		134.84	134.86	134.93	134.94	134.96	134.96	134.86	134.81	134.79	134.79	134.87	134.98	135.06	135.06	135.07
17	134.80	134.83	134.86	134.93	134.94	134.97	134.95	134.85	134.82	134.79	134.79	134.87	135.00	135.06	135.09	135.07
18	134.81	134.83	134.85	134.94	134.93	134.98	134.95	134.85	134.82	134.79	134.80	134.87	135.01	135.06	135.13	135.06
19	134.81	134.83	134.85	134.94	134.93	134.97	134.95	134.84	134.82	134.79	134.79	134.88	135.02	135.05	135.17	135.06
20	134.81	134.83	134.84	134.95	134.92	134.96	134.94	134.83	134.82	134.80	134.80	134.88	135.04	135.05	135.20	135.06
21	134.82	134.84	134.84	134.95	134.92	134.96	134.94	134.82	134.83	134.80	134.80	134.88	135.04	135.06	135.22	135.05
22	134.82	134.84	134.84	134.94	134.91	134.96	134.93	134.81	134.83	134.79	134.81	134.89	135.04	135.06	135.23	135.06
23	134.82	134.83	134.84	134.94	134.91	134.98	134.93	134.82	134.82	134.79	134.81	134.88	135.04	135.05	135.23	135.06
24	134.82	134.83	134.84	134.94	134.90	134.99	134.93	134.83	134.83	134.81	134.80	134.88	135.04	135.05	135.22	135.06
25	134.82	134.83	134.85	134.94	134.90	135.00	134.93	134.82	134.82	134.81	134.80	134.88	135.04	135.04	135.21	135.06
26	134.82	134.85	134.86	134.94	134.90	135.01	134.92	134.82	134.81	134.81	134.80	134.88	135.04	135.04	135.20	135.07
27	134.82	134.85	134.86	134.94	134.90	135.01	134.93	134.81	134.81	134.81	134.80	134.89	135.03	135.04	135.19	135.07
28	134.83	134.85	134.87	134.94	134.89	135.01	134.94	134.82	134.83	134.81	134.81	134.89	135.03	135.05	135.18	135.07
29	134.83	134.87		134.94	134.90	135.01	134.93	134.81	134.83	134.80	134.82	134.90	135.03	135.05		135.08
30	134.83	134.87		134.95	134.91	135.00	134.94	134.81	134.83	134.80	134.82	134.92	135.02	135.06		

31	134.83	134.86		134.95		135.00		134.80	134.83		134.82		135.02	135.07		
----	--------	--------	--	--------	--	--------	--	--------	--------	--	--------	--	--------	--------	--	--

Table 4. Lauceses/ Laukesas Lake water level daily data, m (sensor elevation – 123.110 m LAS07)

Date	2020	2021												2022		
	XII	I	II	III	IV	V	VI	VII	VIII	IX	X	XI	XII	I	II	III
1		123.85	123.89	123.97	124.07	123.95	124.05	123.95	123.76	123.83	123.79	123.76	123.95	124.11	124.11	124.45
2		123.85	123.89	123.97	124.09	123.95	124.04	123.94	123.77	123.83	123.78	123.76	123.96	124.11	124.11	124.43
3		123.85	123.89	123.98	124.10	123.98	124.04	123.93	123.78	123.82	123.78	123.76	123.97	124.12	124.11	124.43
4		123.85	123.89	123.99	124.10	124.02	124.03	123.91	123.78	123.82	123.78	123.77	123.98	124.13	124.11	124.44
5		123.85	123.89	123.99	124.10	124.04	124.02	123.90	123.78	123.82	123.78	123.77	123.98	124.15	124.10	124.43
6		123.86	123.89	123.99	124.10	124.05	124.01	123.90	123.78	123.81	123.78	123.77	123.99	124.17	124.10	124.41
7		123.86	123.89	123.99	124.09	124.07	124.00	123.89	123.79	123.81	123.77	123.79	123.99	124.17	124.11	124.38
8		123.86	123.89	123.99	124.08	124.09	124.00	123.88	123.79	123.81	123.77	123.80	123.98	124.17	124.12	124.36
9		123.87	123.88	123.99	124.08	124.09	124.00	123.87	123.79	123.80	123.77	123.81	123.98	124.17	124.12	124.33
10		123.87	123.88	123.98	124.08	124.10	123.99	123.87	123.80	123.80	123.77	123.81	123.97	124.16	124.13	124.31
11		123.86	123.88	123.98	124.08	124.10	123.99	123.86	123.80	123.80	123.77	123.82	123.98	124.16	124.13	124.28
12		123.87	123.88	123.99	124.07	124.12	123.99	123.85	123.80	123.80	123.76	123.83	124.01	124.15	124.14	124.26
13		123.87	123.87	123.99	124.06	124.13	124.00	123.85	123.80	123.80	123.76	123.83	124.03	124.14	124.14	124.24
14		123.87	123.87	124.00	124.05	124.13	123.99	123.84	123.80	123.80	123.76	123.83	124.03	124.14	124.14	124.22
15		123.87	123.87	124.01	124.04	124.13	123.98	123.83	123.80	123.79	123.76	123.84	124.04	124.14	124.14	124.21
16		123.87	123.87	124.02	124.03	124.12	123.98	123.83	123.79	123.79	123.76	123.84	124.05	124.14	124.14	124.20
17	123.79	123.87	123.87	124.03	124.02	124.11	123.98	123.82	123.80	123.79	123.76	123.84	124.09	124.13	124.17	124.18
18	123.80	123.86	123.88	124.04	124.01	124.11	123.97	123.82	123.81	123.78	123.76	123.84	124.11	124.13	124.25	124.18
19	123.80	123.86	123.87	124.04	124.01	124.10	123.96	123.82	123.80	123.78	123.76	123.85	124.13	124.12	124.29	124.18

20	123.80	123.85	123.87	124.04	124.00	124.09	123.96	123.81	123.80	123.78	123.75	123.85	124.15	124.11	124.34	124.17
21	123.80	123.85	123.87	124.04	124.00	124.08	123.95	123.80	123.81	123.78	123.76	123.86	124.16	124.11	124.38	124.17
22	123.81	123.85	123.86	124.04	123.99	124.08	123.94	123.79	123.81	123.78	123.76	123.88	124.16	124.11	124.43	124.16
23	123.81	123.85	123.86	124.04	123.98	124.09	123.94	123.78	123.81	123.78	123.76	123.88	124.16	124.11	124.47	124.16
24	123.81	123.85	123.86	124.03	123.98	124.09	123.95	123.79	123.81	123.79	123.76	123.88	124.16	124.10	124.49	124.15
25	123.82	123.86	123.87	124.03	123.97	124.09	123.95	123.79	123.81	123.80	123.75	123.88	124.16	124.09	124.49	124.15
26	123.82	123.87	123.91	124.03	123.96	124.10	123.94	123.78	123.80	123.80	123.75	123.89	124.16	124.09	124.49	124.15
27	123.83	123.88	123.94	124.03	123.96	124.09	123.96	123.78	123.81	123.80	123.75	123.90	124.15	124.08	124.48	124.14
28	123.83	123.89	123.95	124.02	123.95	124.09	123.97	123.78	123.82	123.79	123.76	123.90	124.15	124.09	124.47	124.13
29	123.83	123.89		124.02	123.95	124.08	123.96	123.78	123.83	123.79	123.76	123.92	124.14	124.09		124.12

Table 5. Skirnas Lake water level daily data, m (sensor elevation – 142.298 m LAS)

Date	2021						2022					
	IV	V	VI	VII	VIII	IX	X	XI	XII	I	II	III
1	143.14	143.13	143.19	143.08	142.97	143.01	142.99	143.00	143.09	143.12	143.15	143.19
2	143.15	143.13	143.18	143.07	142.97	143.01	143.00	143.00	143.10	143.13	143.15	143.19
3	143.14	143.15	143.17	143.07	142.98	143.01	142.99	143.01	143.10	143.14	143.15	143.19
4	143.16	143.16	143.17	143.06	142.98	143.01	142.99	143.01	143.10	143.15	143.15	143.18
5	143.17	143.17	143.17	143.06	142.98	143.00	142.99	143.02	143.09	143.16	143.16	143.17
6	143.16	143.18	143.16	143.06	142.98	143.00	142.99	143.02	143.09	143.15	143.16	143.17
7	143.16	143.19	143.16	143.05	142.99	143.00	142.98	143.04	143.10	143.15	143.16	143.17
8	143.15	143.19	143.15	143.05	142.99	143.00	142.98	143.03	143.11	143.15	143.16	143.16
9	143.17	143.19	143.15	143.04	142.99	143.00	142.98	143.03	143.10	143.14	143.16	143.15
10	143.16	143.19	143.14	143.04	142.99	143.00	142.98	143.03	143.09	143.14	143.16	143.14
11	143.15	143.19	143.15	143.03	142.99	143.00	142.99	143.04	143.09	143.14	143.17	143.15
12	143.17	143.19	143.14	143.03	142.98	143.00	142.98	143.04	143.09	143.15	143.16	143.15

13	143.14	143.18	143.15	143.03	142.98	143.00	142.98	143.03	143.09	143.14	143.16	143.13
14	143.13	143.19	143.14	143.02	142.99	143.00	142.98	143.03	143.10	143.14	143.16	143.13
15	143.13	143.19	143.14	143.02	142.99	142.99	142.99	143.03	143.10	143.13	143.17	143.13
16	143.13	143.20	143.13	143.02	142.99	142.98	142.99	143.03	143.10	143.14	143.17	143.13
17	143.14	143.20	143.13	143.02	143.00	142.98	142.99	143.04	143.10	143.14	143.17	143.12
18	143.13	143.20	143.12	143.03	143.01	142.97	142.98	143.05	143.10	143.13	143.18	143.12
19	143.14	143.20	143.12	143.02	143.00	142.97	142.98	143.05	143.11	143.14	143.19	143.11
20	143.14	143.20	143.12	143.02	143.00	142.98	142.99	143.04	143.11	143.15	143.19	143.11
21	143.14	143.21	143.11	143.01	143.01	142.98	143.00	143.05	143.12	143.14	143.20	143.10
22	143.13	143.20	143.11	143.00	143.01	142.98	143.00	143.05	143.12	143.14	143.20	143.10
23	143.13	143.21	143.10	143.00	143.00	142.99	142.99	143.05	143.12	143.14	143.21	143.10
24	143.13	143.21	143.10	142.99	143.00	143.00	142.99	143.05	143.12	143.14	143.20	143.11
25	143.13	143.20	143.10	142.98	143.00	143.01	142.99	143.06	143.12	143.14	143.21	143.10
26	143.13	143.21	143.10	142.98	142.99	143.00	142.99	143.06	143.12	143.14	143.21	143.11
27	143.13	143.21	143.10	142.98	143.00	143.00	143.00	143.06	143.11	143.14	143.20	143.11
28	143.13	143.21	143.10	142.98	143.01	143.00	143.00	143.06	143.12	143.14	143.19	143.10
29	143.13	143.20	143.09	142.98	143.02	143.00	143.00	143.07	143.12	143.14		143.11
30	143.13	143.19	143.09	142.98	143.01	143.00	143.01	143.09	143.12	143.15		143.10
31		143.19		142.97	143.01		143.01		143.12	143.16		143.10