



**Joint management of Latvian – Lithuanian transboundary river and lake water bodies (TRANSWAT)**

# PROJECT REVIEW

**Tatjana Kolcova | *Project manager***

*Project Conference, Riga 6 September 2022*





# General information

The aim of TRANSWAT project is to ensure joint assessment and management of trans-boundary river and lake water bodies which hydro-morphological and/or ecological quality pose a risk for not meeting the EU Water Framework Directive (WFD) requirements.

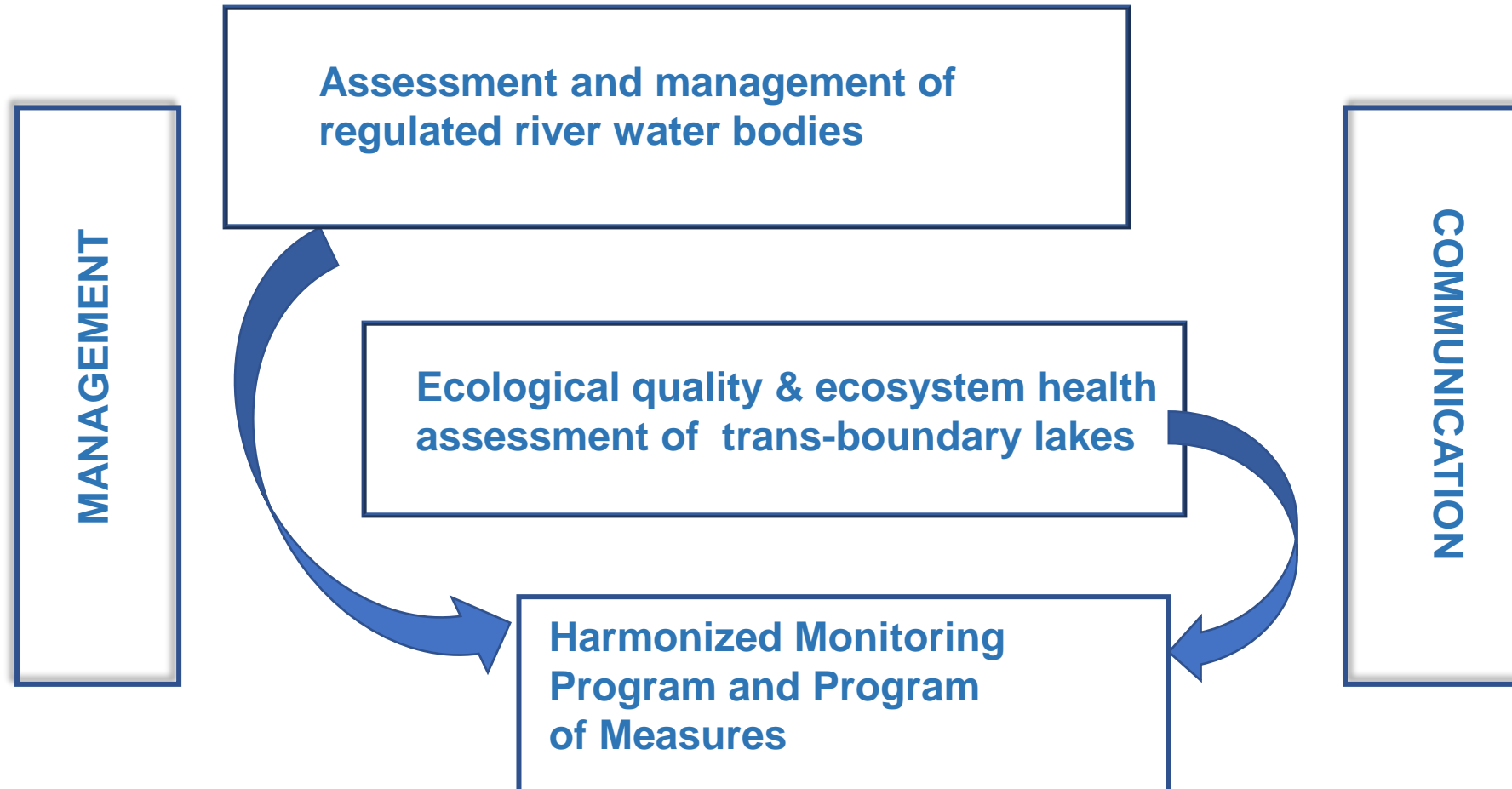
**Project duration: 24 months** (01.10.2020 – 30.09.2022)

**Project budget:** 607 466.51 EUR, including ERDF financing 85 % (516 346.53 EUR)

**Project lead partner:** Latvian Environment, geology and meteorology centre

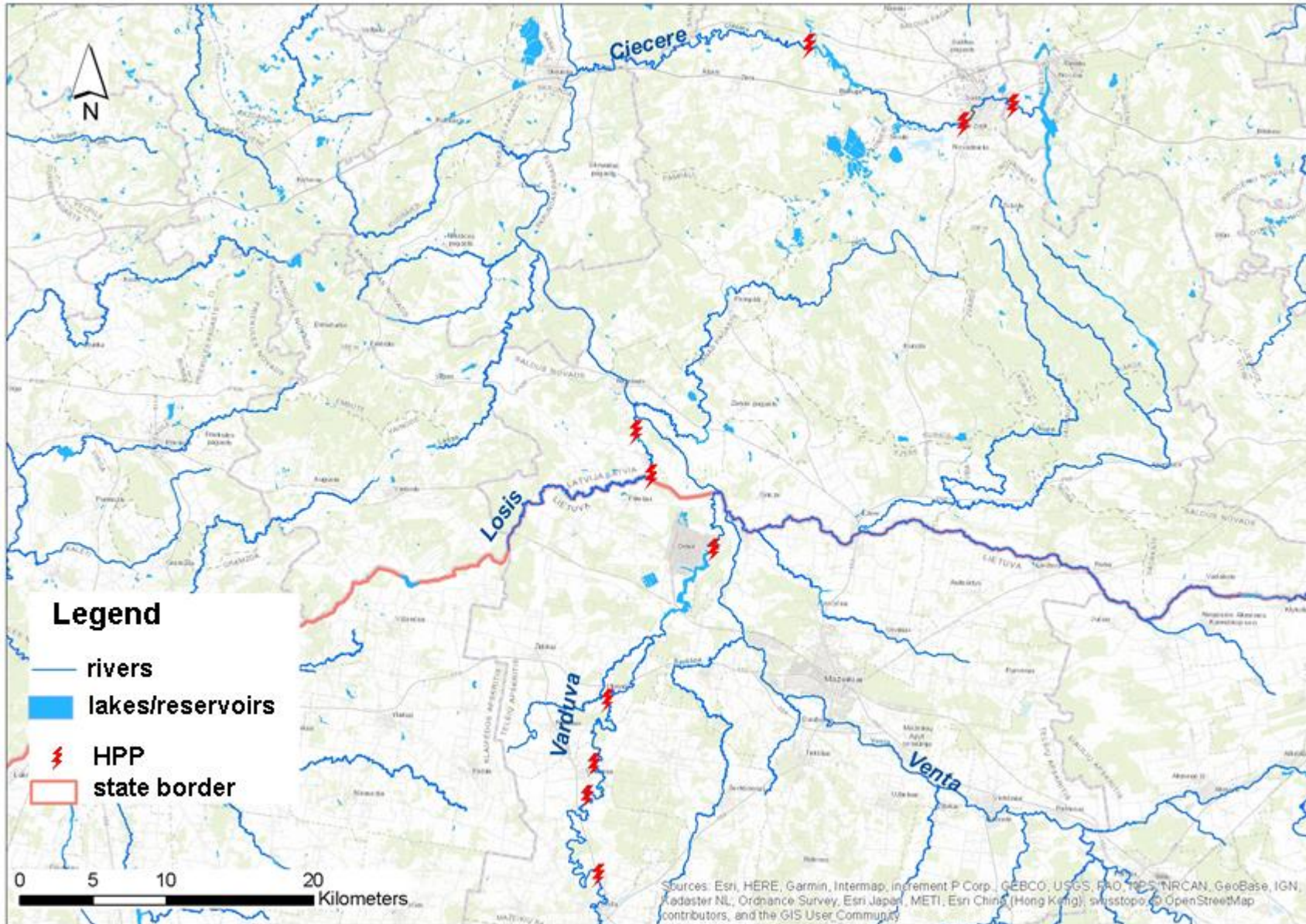
**Project partners:** Lithuanian Energy Institute,  
Latvian University,  
Institute of Food Safety, Animal Health and  
Environment BIOR,  
Nature Researge Centre

# Project work packages



# T1. Assessment and management of regulated river water bodies

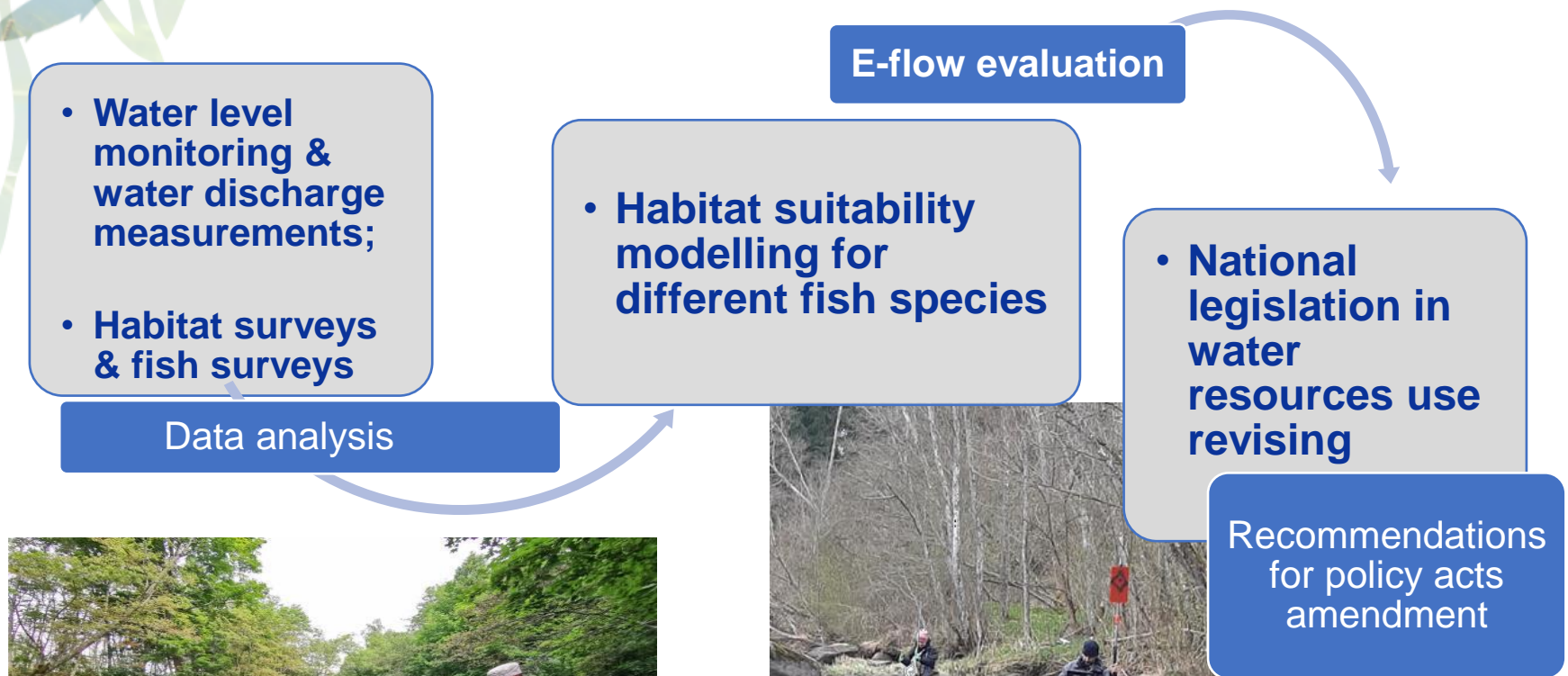
## Case-study area



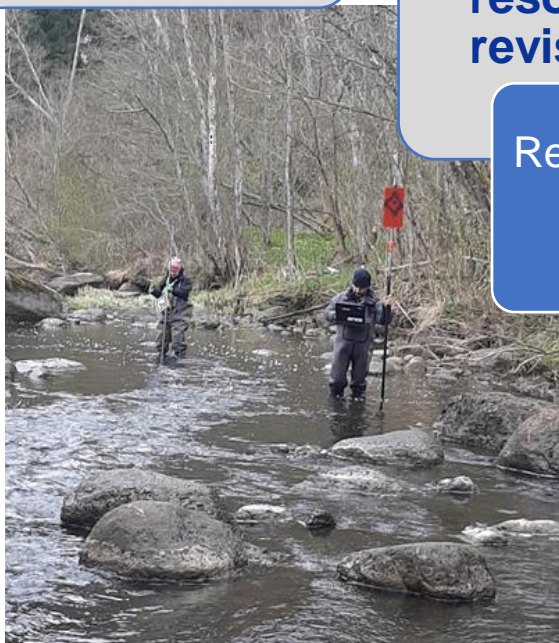
- Ciecere River – Ciecere HPP
- Ciecere River – Dzirnavnieki HPP
- Ciecere River – Pakuli HPP
- Losis River – Grantini HPP
- Losis River – Lejnieki HPP
- Varduva River – Kulšėnai HPP
- Varduva River – Renavas HPP
- Varduva River – Vadagiai HPP
- Varduva River – Ukrinai HPP
- Varduva River – Juodeikiai HPP

# T1. Assessment and management of regulated river water bodies

## Main tasks



Habitat survey in Varduva River (photo: V. Akstinas, 2021)



Habitat survey in Losis River (photo: T.Koļcova, 2021)



Fish survey in Losis River (photo: R. Medne, 2021)

# T1. Assessment and management of regulated river water bodies

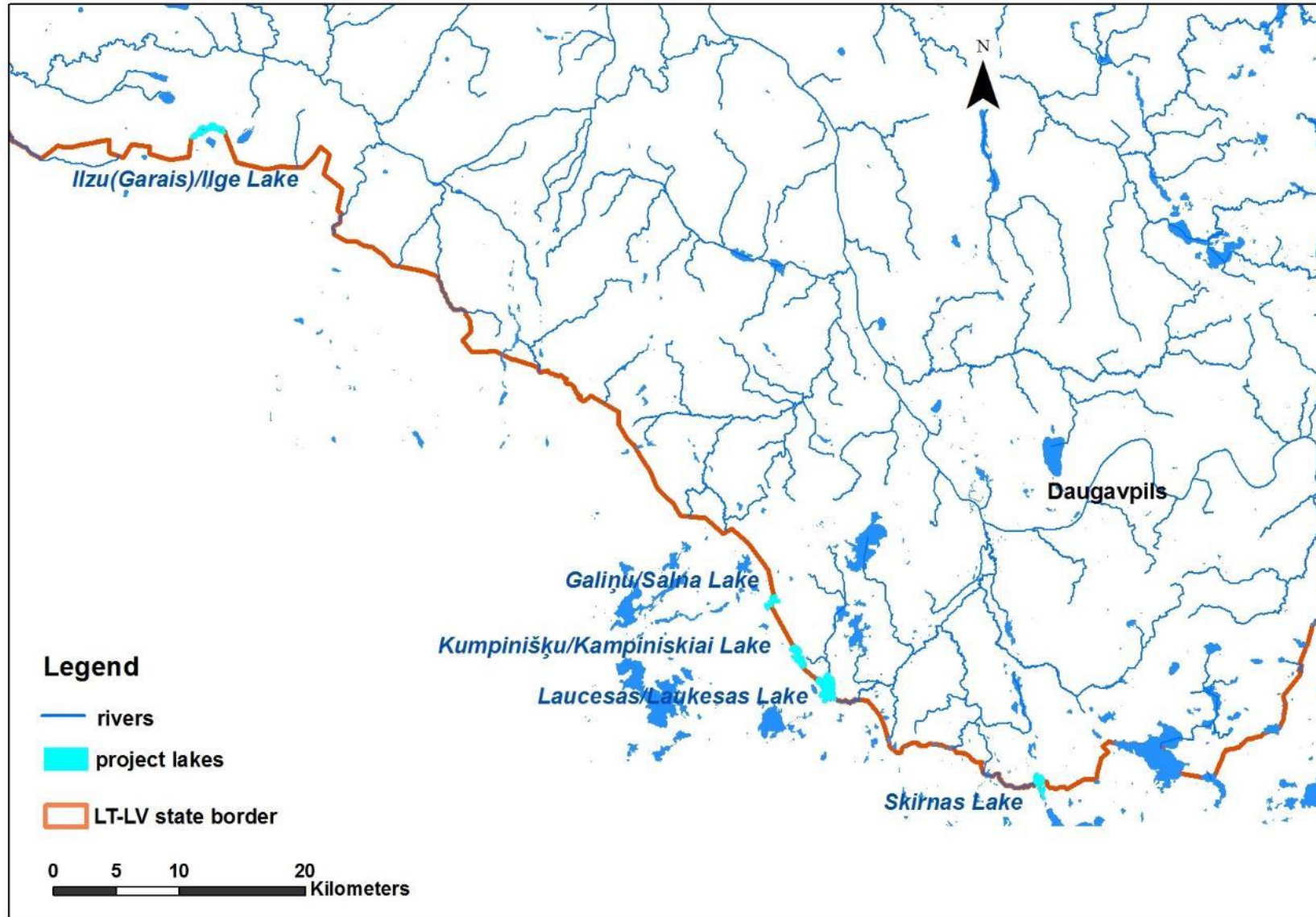
## Results

1. Defined seasonal E-flow for fish spawning and growing periods downstream each HPP in cascade;
2. Recommendations for amendment of national legislation for water resources use;
3. List of the most effective mitigation measures for river regulated by HPP;
4. Recommendations for operational regime on HPP cascades;
5. Water level, water discharge & habitat databases for project rivers.



Project materials on the website of the LEGMC: <https://videscentrs.lvgmc.lv/iebuverts/projekts-latvijas-lietuvass-parrobezu-upju-un-ezeru-udens-baseinu-vienota-parvaldiba>

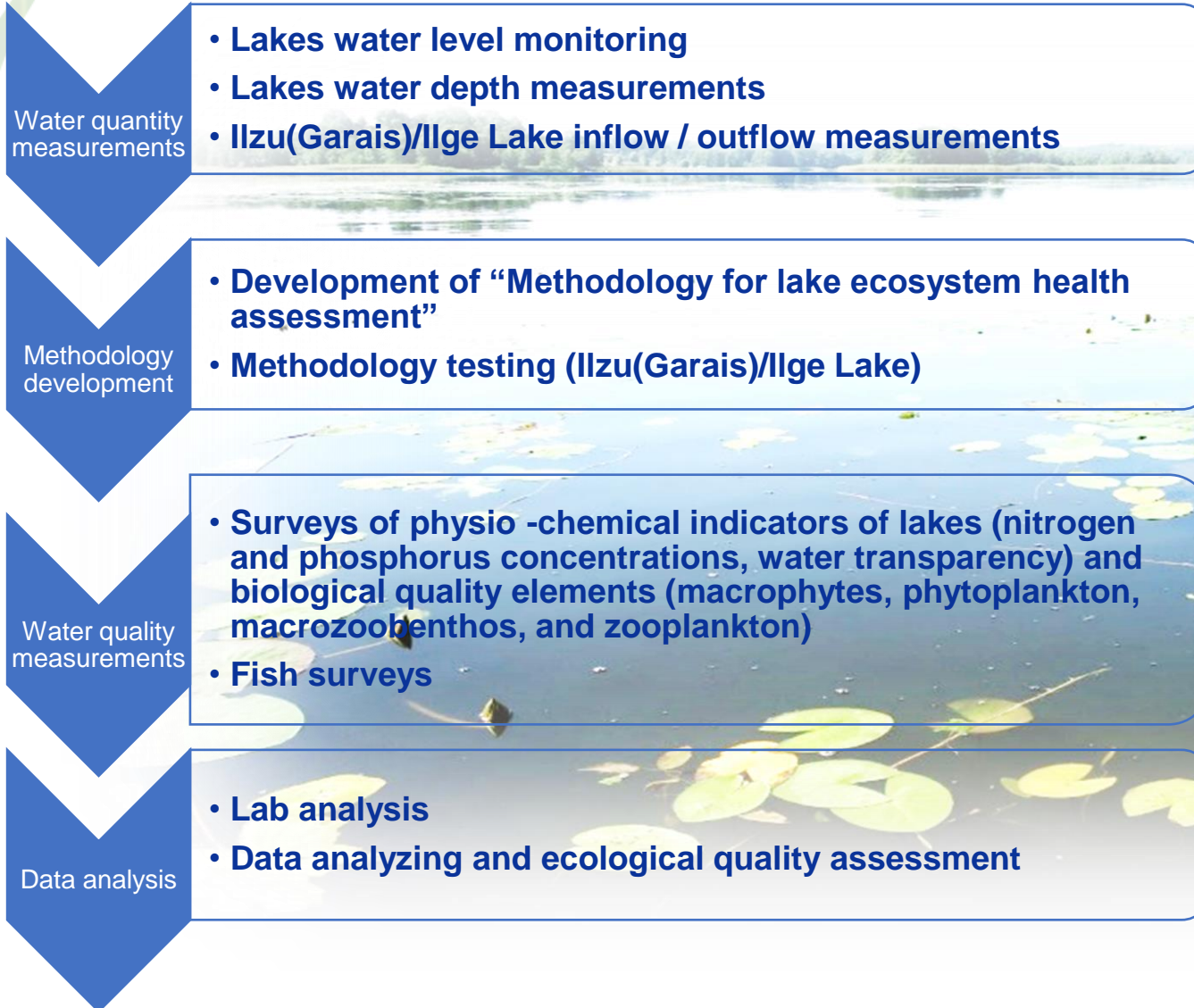
## T2. Ecological quality and ecosystem health assessment of trans-boundary lakes Case-study area



- Ilzu (Garais)/Ilge Lake
- Galinū/Salna Lake
- Kumpinisku/Kumpiniskiai Lake
- Laucesas/Laukesas Lake
- Skirnas Lake

# T2. Ecological quality and ecosystem health assessment of trans-boundary lakes

## Main tasks

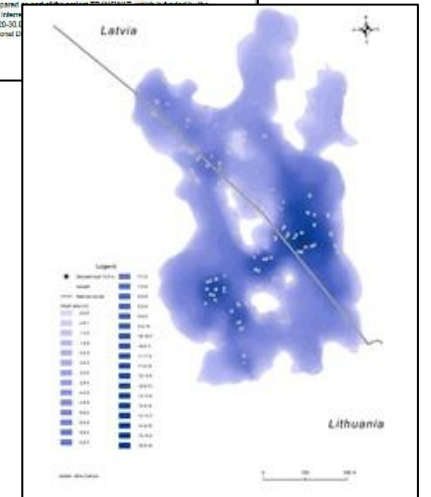
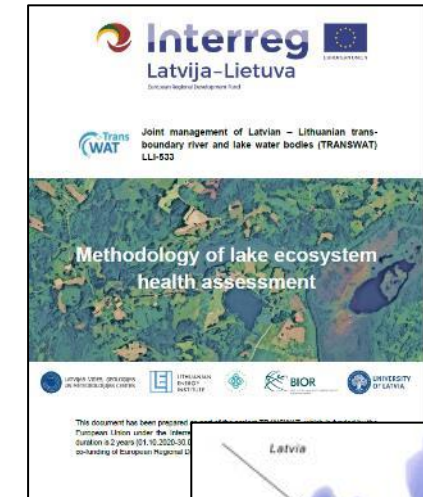




# T2. Ecological quality and ecosystem health assessment of trans-boundary lakes

## Results

1. All five LV-LT transboundary lakes delineated as “water bodies”
2. Developed “Methodology for lake ecosystem health assessment”;
2. Assessed Ilzu (Garais)/Ilge Lake ecosystem health;
3. Assessed Ilzu (Garais)/Ilge Lake contamination risk of surface water – groundwater interaction;
4. Developed lakes bathymetry mapes;
5. Assessed ecological status of all LV-LT transboundary lakes



Project materials on the website of the LEGMC: <https://videscentrs.lv/gmc.lv/iebuveets/projekts-latvijas-lietuvaz-parrobezu-upju-un-ezeru-udens-baseinu-vienota-parvaldiba>



# Harmonized Monitoring Program and Program of Measures Results

1. Developed harmonized LV-LT lakes Monitoring Program;
2. Developed harmonized LV-LT lakes Program of Measures;
3. List of effective measures for rivers regulated by HPPs.

Project materials on the website of the LEGMC: <https://videscentrs.lv/gmc.lv/iebuverts/projekts-latvijas-lietuvass-parrobezu-upju-un-ezeru-udens-baseinu-vienota-parvaldiba>

# Challenges

- **COVID-19 restrictions;**
- **Lack of time;**
- **Weather conditions;**
- **Lack of data (water quality parameters, hydro-geological, hydrological, HPP technical specification);**
- **Physical obstacles – bushes, woody debris, beaver dams.**



# Thank you for attention!

Write me:



tatjana.kolcova@lvgmc.lv



Joint management of Latvian – Lithuanian  
transboundary river and lake water bodies  
(TRANSWAT)