



LEGMC

**LATVIAN ENVIRONMENT,
GEOLOGY
AND METEOROLOGY CENTRE**

SUSTAINABILITY REPORT 2024



CONTENTS

12

| | |
|--------------------------------------|----|
| About the report..... | 3 |
| About the LEGMC | 8 |
| Governance..... | 36 |
| Corporate governance statement | 45 |
| Stakeholder involvement | 51 |
| Key areas for sustainability | 55 |
| Environmental impact | 62 |
| Impact on society | 75 |
| Economic impact..... | 83 |



ABOUT THE REPORT

1

Sustainability Report 2024



LATVIAN ENVIRONMENT,
GEOLOGY AND METEOROLOGY
CENTRE (LATVIJAS VIDES,
ĢEOLOĢIJAS UN
METEOROLOĢIJAS CENTRS)



ABOUT THE REPORT

/4

This is the Sustainability Report 2024 of the State Limited Liability Company "Latvijas Vides, ģeoloģijas un meteoroloģijas centrs" ("Latvian Centre for Environment, Geology and Meteorology") (hereinafter referred to as - the LEGMC). It is based on the assessment of key areas of sustainability performed by the LEGMC, using the United Nations Sustainable Development Goals framework as a basis and inspired by the reporting principles and approaches set out by the Global Reporting Initiative (GRI).

The report describes the activities of the LEGMC in 2024, including reflection of the environmental, social and economic impacts of the capital company. The capital company prepares a report on annual basis. The report has not been subject to external independent audit.

The report is examined and approved by the Management Board, which is responsible for the matters of corporate governance and sustainable development.

Contact details for matters related to the Sustainability Report:
Quality Manager Sigita Muižniece (sigita.muizniece@lvgmc.lv)





ABOUT THE REPORT

/5

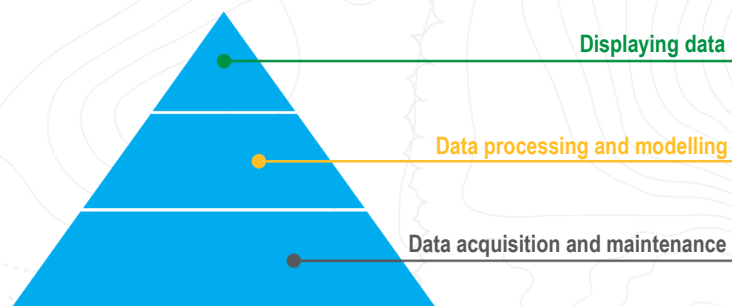
Welcome, reader of our Sustainability Report!

Sigita Škapare, Member of the Board

We invite you to read our Sustainability Report 2024 to learn even more about the fields of operation and activities that shape our daily lives, and perhaps get some new ideas on how environmental and climate data can help your business too.

Most of you come into contact with the work of the LEGMC in your daily lives when you read the latest weather forecasts. We have much broader fields of activity. In recent years, we have been particularly proud of the fact that we have become a competence centre for the environmental data, whose prepared information and analytics are used not only by everyone in Latvia to plan their daily routines; our data is used also by sectors of the national economy that are critical to Latvia's overall development to make their business decisions. These include, for example, the energy sector for forecasting the use of renewable resources, and the financial sector - for assessing the physical climate risks of its customers.

Work with different types of data at the LEGMC takes place at three levels, and we have continued to invest and develop new approaches, services and infrastructure at each of them in 2024 to make the best quality environmental data available to all of you in a way that is easy to understand and use.





ABOUT THE REPORT

/6

Data acquisition is provided by monitoring of various environmental parameters (satellite data, surveys, sampling, observations, etc.). In 2024, the LEGMC, with co-financing from the European Regional Development Fund, launched a monitoring network development project, which the framework of which replacement of the current meteorological radar in the Greater Riga at Riga International Airport, installation of a new radar at Kuldiga, construction of 10 new meteorological observation stations, 6 new hydrological observation stations, 8 new atmospheric air quality observation stations and modernisation of 10 underground water observation stations, development of an air modelling tool and other improvements are planned by 2027 to make the data acquired more detailed, more accurate, sooner accessible and allow for better forecast of the future processes in the environment and to comply with international legal framework and Latvian national laws and regulations. The security of our infrastructure to ensure data continuity is also a key area of development.

The acquired data is processed by modellers according to the stakeholders and their needs. The target audience for our services is very broad, but, in recent years, and especially in 2024, we have been increasingly focusing on the development of commercial services to enable better and more informed business decisions across various sectors based on environmental data. Environmental data is also an important source of information for the defence sector we have been actively cooperating with. To ensure that environmental data can be modelled for different purposes, the expertise of scientists and analysts needs to be developed, and we pay close attention to this.

Data accessibility plays increasingly important role - especially on digital platforms. From 2023, we will gradually make data publicly available on the Open Data Portal, so that reliable and verified environmental data can be used by a wide range of users, analysing the correlations relevant to each of them. We have continued to publish new datasets also in 2024, and we are planning to open up even more widely usable environmental data by 2026. We are proud that, in 2024, data of the Latvian Open Data Portal was among the top five most used datasets nationwide.





ABOUT THE REPORT

17

In order to improve daily access to data, in 2024 we worked on the development of the Meteo.lv mobile app, which became available to users in 2025.

We have identified the following key strategic priorities, covering different service areas:

- ◆ To promote sustainable, corporate and socially responsible activities of the LEGMC, to enhance the recognisability and reputation of the LEGMC;
- ◆ To motivate and engage staff providing competitive remuneration commensurate with performance and quality;
- ◆ To promote customer satisfaction (we are proud that our customers' rating of the quality and accessibility of our services is very highly);
- ◆ To perform environmental, climate and subterranean depth data analysis and process modelling for the operation and development of the national economy and other sectors, to develop an impact-oriented warning and forecasting system taking the climate changes into account;
- ◆ To develop a modern and efficient infrastructure for monitoring and access to observational data;
- ◆ To provide laboratory services in the fields of environmental quality, radiation testing and calibration of measuring instruments;
- ◆ To manage hazardous waste, radioactive waste and nuclear sites.

In 2025, the key areas for the development are the following - successful progress of infrastructure projects and improvement of the efficiency of infrastructure management, improvement of data security and management, as well as the development of numerical modelling, which makes it possible to use data in a much broader way and to gain new knowledge about the development processes in the environment. Requirements of new directives must be implemented in the areas of both the air, subterranean depths and water management, whose aim is to improve the environmental condition and simultaneously provide a broader availability of the necessary data to the public and decision-makers.





ABOUT THE LEGMC

7

2





ABOUT THE LEGMC

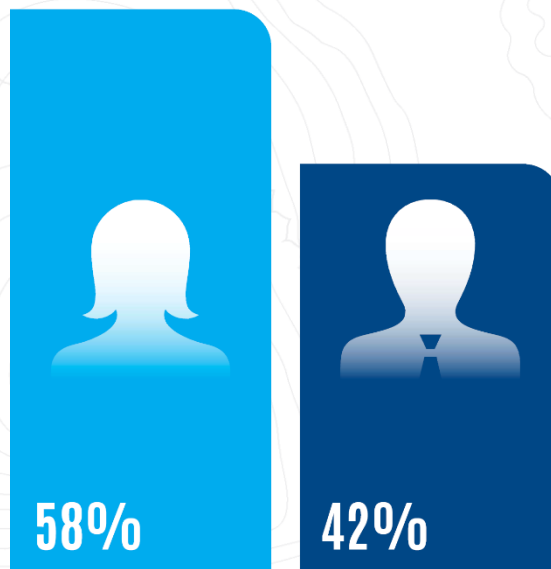
/9

The SLLC (VSIA) "Latvijas Vides, ģeoloģijas un meteoroloģijas centrs" is a 100% state-owned capital company, whose overall strategic objective is to provide high quality services of strategic importance for the development of the country in the fields of the environment, geology, hydrology, air quality, climatology, meteorology and hazardous waste management, as well as to ensure efficient management of the infrastructure necessary for the provision of these services.

The Ministry of Environmental Protection and Regional Development (MoEPRD) was the holder of the shares in the LEGMC until 30 June 2024, but on 1 July 2024 the Ministry of Climate and Energy became the holder of the shares in the LEGMC following the reorganisation of the previous structure and responsibilities of the MoEPRD.

Taking into account the extensive amount of data processed by the LEGMC, the capital company can be considered the **Latvian competence centre for environmental and climate data**. The information provided by the LEGMC helps make daily decisions to Latvian citizens and visitors, as well as businesses and institutions whose operations are affected by both weather conditions expected in the nearest future, and long-term climate changes in our region, as well as other environmental data.

In order to ensure the operation of the LEGMC, in 2024 the capital company employed **259** employees, the majority of whom are high-level environmental experts. Whereas, data analysts form a growing category of employees. From a gender equality perspective, 58% of the LEGMC staff in 2024 were women and 42% were men.

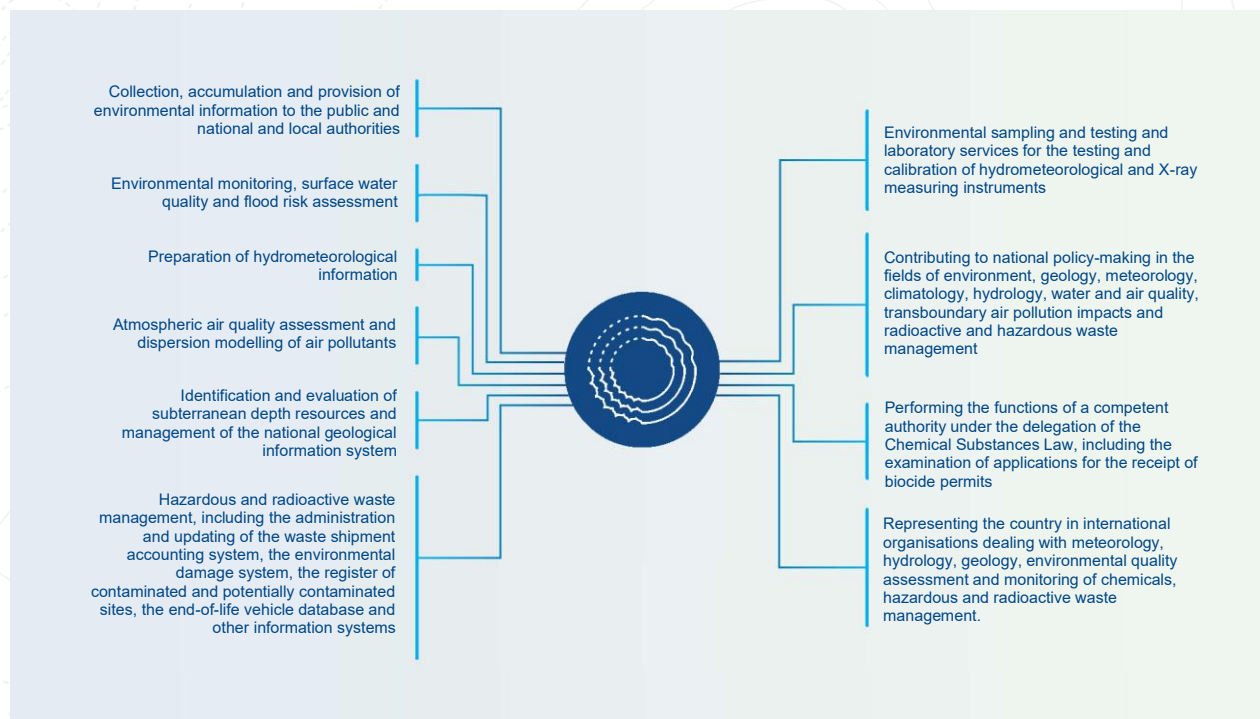




ABOUT THE LEGMC

/10

The main fields of activity of the LEGMC are:





ABOUT THE LEGMC

/11

The headquarters of the LEGMC is located at 165 Latgales Street, Riga, but the capital company manages a broad network of observation stations that measure air temperature, wind speed, precipitation, thickness of snow cover, water conditions and other key indicators on a daily basis.

The LEGMC manages:

- 33 meteorological observation stations
- 83 hydrological observation stations
- 86 underground water observation stations with 382 boreholes and 30 sources
- 9 atmospheric air quality stations and 3 precipitation quality stations
- 580 surface water observation stations on rivers and lakes

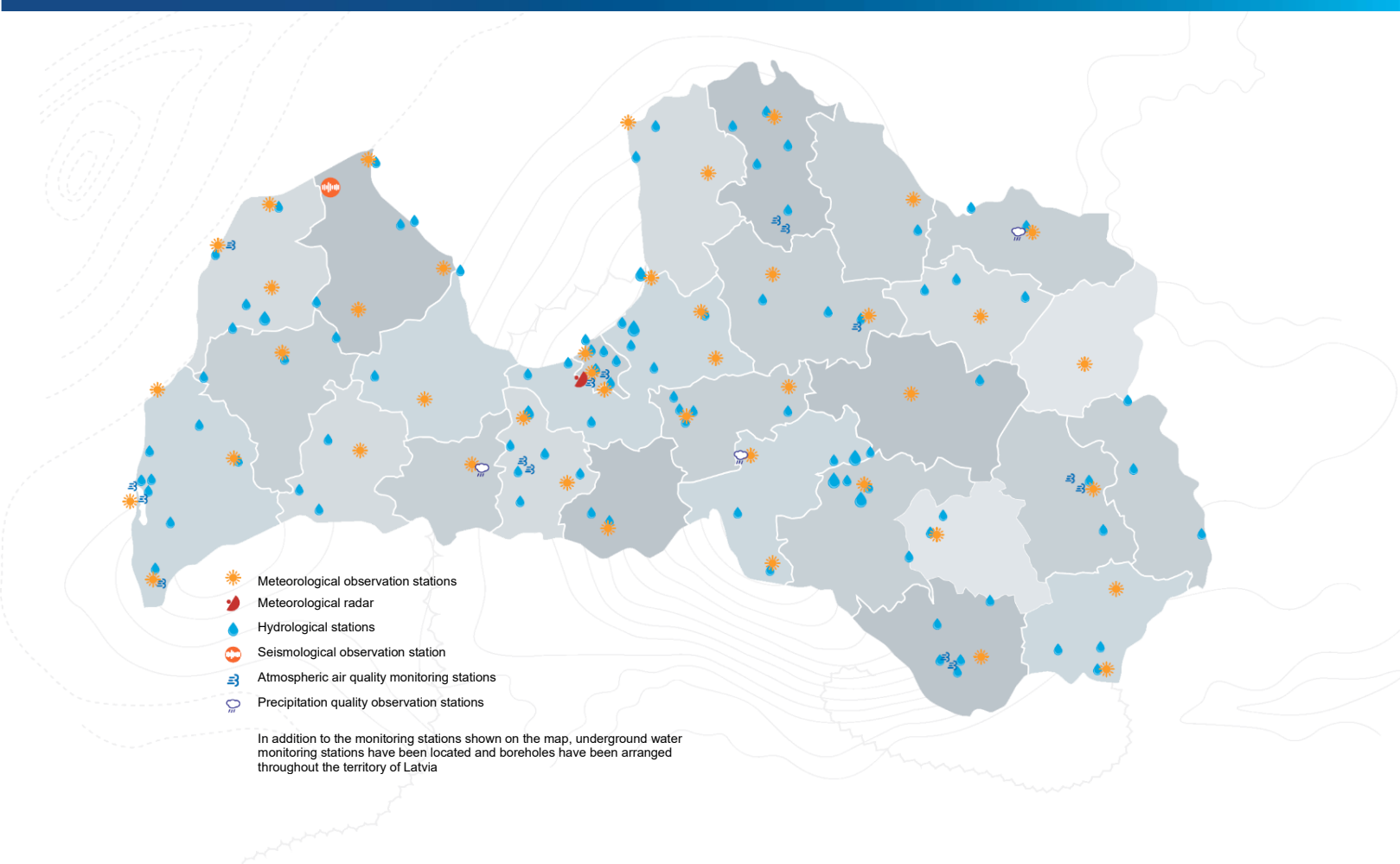
The LEGMC also provides **operation of the meteorological Doppler radar** at Riga International Airport and **operation of the seismological monitoring station "Slītere"** in Northern Kurzeme.





ABOUT THE LEGMC

/12





ABOUT THE LEGMC

/13

The extensive staff of the LEGMC provides state-defined functions as well as commercial services to external customers. **Functions defined by the State** in accordance with the Cabinet of Ministers Order No. 448 of 1 July 2009 on the establishment of the LEGMC include:

- Creating and developing a unified environmental information system;
- Participation in the development of a national environmental monitoring and indicator system;
- Environmental, geological, hydrological and meteorological observation and assessment within the framework of international, national and regional projects and programmes;
- Accumulation, storage, systematisation and updating of environmental quality, geological, hydrological and meteorological information;
- Environmental quality testing, assessment of the status, trends, forecasts and risk factors of environmental quality and natural resources, and preparation of Latvian environmental statements and national reports;
- Provision of environmental, geological, hydrological and meteorological information, as well as information on hazardous and radioactive waste management to the public, state and municipal, the European Union and international organisations;
- Development of weather, hydrological and other specialised forecasts;
- Development of information for aeronautical navigation;
- Informing the public about dangerous meteorological and hydrological phenomena, as well as phenomena associated with changes in the quality of the environment that may cause disasters, damage and accidents;
- Provision of information to the authorities responsible for civil protection in planning measures to protect underground water supply boreholes and ensure water supply in the event of a national emergency;
- Assessment and identification of Latvia's subterranean depth resources;
- Maintenance of the Latvian State Geological Fund and the borehole core and reference sample repository;
- Performing the functions of a meteorological authority under the Convention on International Civil Aviation of 7 December 1944, as well as ensuring the fulfilment of other international obligations of the State within the scope of the activities of the LEGMC;
- Representing Latvia in international organisations dealing with meteorology, hydrology, geology, environmental quality assessment and monitoring of chemicals, hazardous and radioactive waste management, including the World Meteorological Organisation and various working groups formed by the European Commission;





ABOUT THE LEGMC

/14

- Performance of tasks of the European Environment Agency focal point and national competent authority for chemical substance management in Latvia;
- Management of radioactive waste, the radioactive waste storage facility "Radons", Salaspils nuclear reactor, state-owned hazardous waste treatment facilities, hazardous waste incineration plants, hazardous waste landfills, and other facilities and installations related to the management of hazardous waste;
- Testing of radioactive materials and sealed sources of ionising radiation at facilities managed by the LEGMC;
- Participation in the aftermath of radiation accidents, decontamination of radioactively contaminated areas, vehicles and other objects, as well as management of radioactive waste.

Every year, the LEGMC, on the basis of data collected within the framework of the performed functions, prepares a series of public reports on the current situation in various environment-related areas - e.g., [Statement on Air Quality in Latvia](#), [Statement on the State of Surface and Underground Waters](#), [The National State of the Environment Report](#), [Statement on Climatic Conditions in Latvia](#), the stock balance of mineral resources (raw materials for construction, peat sapropel, healing mud), the stock balance of groundwaters, etc.

In order to ensure the above-mentioned state-delegated functions, in 2024, the LEGMC has received state budget funding in the amount of **EUR 6.67 million**.

At the same time, the LEGMC also provides **commercial services to external customers** - 45 types of services are available in total, which include:

- Preparation of meteorological and hydrological forecasts, including specialised forecasts for certain sectors (e.g., electricity generation in wind farms or hydroelectric power plants, where weather conditions and changes thereof are crucial to the efficiency of their operations);
- Air and emissions measurements, including the compilation of the emission data;
- Modelling the dispersion of air pollutants;
- Performance of activities in the greenhouse gas (GHG) emission unit registry;
- Hazardous and radioactive waste management services;
- Provision of climatic, meteorological and hydrological information, including with regard to certain climatic risks (e.g., flood risk modelling);
- Assessment and provision of geological and hydrogeological information, including acceptance of mineral reserves;





ABOUT THE LEGMC

/15

- 💧 Laboratory services, including:
 - 💧 Water analysis;
 - 💧 Sampling and testing of water, soil, air, hazardous waste and other environmental samples, including radioactivity testing;
 - 💧 Testing and calibration of hydrometeorological, X-ray dosimeters and other X-ray measuring instruments;
 - 💧 Dosimetric measurements;
- 💧 and other services

Services are regularly evaluated in the light of customer feedback and needs, and, where necessary, updated with new services meeting the market needs.

In 2024, the LEGMC's revenue from commercial services amounted to **3.27 million euro**.

Also, **1.26 million euro** in the capital company's turnover in 2024 is the share of revenue related to participation in international and national projects (see page 26 for more details on project participation).





Strategy and its implementation

Every year, the LEGMC sets non-financial and financial objectives for the implementation of the priority fields of action.

In 2024, the following **non-financial objectives** were set and the following activities related thereto were performed:

- ◆ **To promote sustainable, corporate and socially responsible activities of the LEGMC, as well as to enhance the recognisability and reputation of the LEGMC.** Implementation of compliance of the IT security system with ISO 27001 has been commenced - the critical infrastructure package has been approved, and the preparation of the certification of the hydro-meteorological data acquisition, processing and presentation process have been commenced. The 2023 Sustainability Report has been prepared and approved. Monitoring audit of the integrated management system (ISO 9001, ISO 50001) with positive opinion has been performed.
- ◆ **Motivate and engage staff by ensuring pay compliant with the performance and quality.** A new pay and appraisal system has been introduced. Improved training system, commenced development of professional duty succession programme with 30% of staff involved in training and activities. Team-building events and staff survey have been organised.
- ◆ **Promote customer satisfaction.** Customer satisfaction measurements were performed for four service groups, with the overall satisfaction rate of 88.7%. The procurement tenders achieved a 50.7% success rate, well above the target.
- ◆ **Analyse and model environmental, climate and subterranean depth data.** Mobile app with alerts and weather widgets have been developed. Three future climate change scenarios for the territory of Latvia have been adapted and analysed. The Climate Change Impact Database has been updated with 25 new impact indicators.

Along with the non-financial objectives, the capital company has financial objectives set every year. Although the financial result of the LEGMC remained negative in 2024, it has improved significantly compared to the previous year, with a 79.3% decrease in losses and achieved positive EBITDA. Detailed information on financial indicators is available in the [LEGMC Annual Report](#).

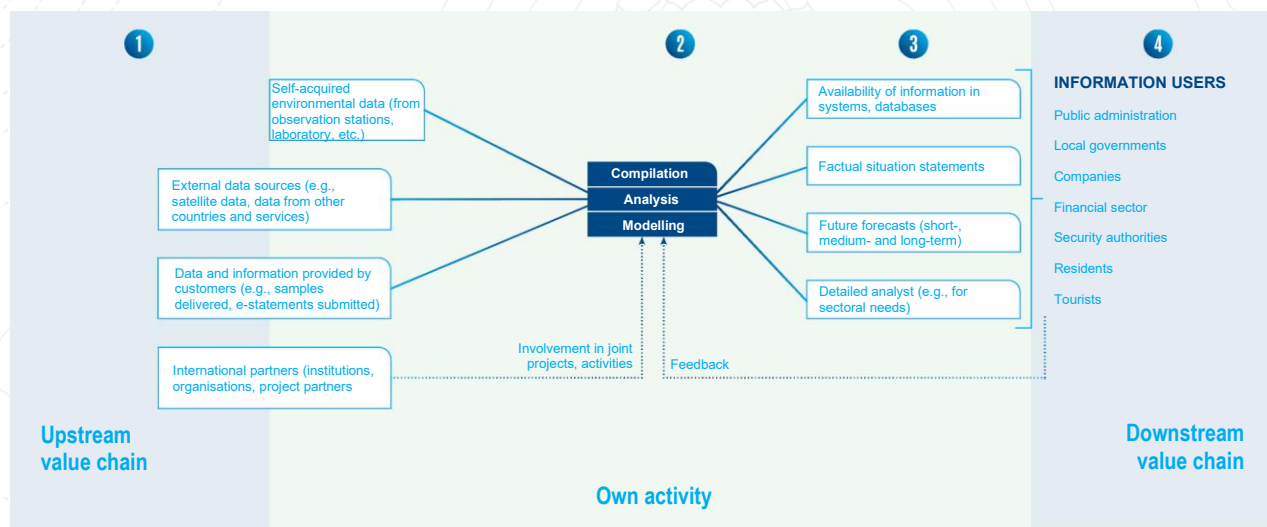




Value chain

From a value chain perspective, the activities of the LEGMC can be divided into four main stages - ① environmental data and information production, ② processing, ③ creation of a product useful for the user, and ④ its use. Most of the above activities are carried out by the LEGMC itself, but the upstream value chain includes the extraction of data and information - including from external sources - and the downstream value chain includes the further use of the resulting product.

The LEGMC value chain can be represented as follows:





Participation in organisations and external initiatives

In order to ensure the availability of increasingly accurate meteorological information, more efficient management of subterranean depths, hazardous and radioactive waste and other functions, the LEGMC is a member of the following European and global organisations:

WORLD METEOROLOGICAL ORGANISATION (WMO)

Promotes cooperation between meteorological services of various countries of the world and other related organisations to improve weather forecasting, climate research and the prevention or mitigation of natural disasters. The above includes the development of guidelines and standards by the organisation for the acquisition, processing and transfer of weather-related data between services to ensure data quality and comparability. The World Meteorological Organisation also coordinates international efforts to issue warnings for extreme weather conditions, climate change and natural disasters. The LEGMC is also involved in the WMO Global Atmospheric Watch (GAW), which coordinates high-quality observations of atmospheric composition worldwide down to local scales and aims to develop a common, coordinated global understanding on atmospheric composition and changes, and helps to improve understanding of the interactions between the atmosphere, oceans and biosphere.

EUROPEAN ORGANISATION FOR THE EXPLOITATION OF METEOROLOGICAL SATELLITES (EUMETSAT)

Provides access to various data acquired by using satellite instruments and usable in meteorological models and forecasting systems to improve the accuracy of forecasts. This data is particularly important in cases of natural disasters, as they allow their impact and development to be assessed, while long-term data from satellite instruments enables forecast of climate change and helps analysing their trends.

EUROPEAN METEOROLOGICAL NETWORK (EUMETNET)

Provides data exchange between meteorological services of the European countries, including enabling to cooperate in the field of the development of operational forecasts and weather-related warnings and of the formation of meteorological infrastructure, as well as to promote the exchange of knowledge and experience between countries.

NORDIC-BALTIC METEOROLOGICAL COOPERATION CONSORTIUM (NORDMET)

Facilitates data exchange between the regional meteorological services, provides a platform for cooperation to improve operational forecasts and warnings to the public, and to coordinate climate research in the region. It is particularly important that NORDMET provides a common platform for performing and developing numerical weather modelling.

SERVICES





ABOUT THE LEGMC

/19

NETWORK FOR METEOROLOGICAL COOPERATION ON OPERATIONAL NUMERIC WEATHER PREDICTION METCOOP

Provides a platform for cooperation between meteorological services in the region in the development of long-term and short-term forecasts, including for use in different sectors of national economy (e.g., agriculture, aviation, energy, etc.). The cooperation network includes both data exchange and the development of forecasting methodologies, and implementation of joint research and development projects for further improvement of the quality and accuracy of forecasts.

THE EUROPEAN CENTRE FOR MEDIUM-RANGE WEATHER FORECASTS (ECMWF)

Provides access to data acquired through the use of one of the world's most advanced meteorological models and modern techniques. Offers training programmes for the professional development of meteorologists and scientists and promotes the development of global forecasting systems, thus enabling society to provide increasingly accurate and reliable weather forecasts.

EUROPEAN ENVIRONMENT AGENCY (EEA)

European Union agency providing knowledge, data and analytical experience to support Europe's environmental and climate goals. The EEA aims to support sustainable development by helping to achieve significant and measurable improvements in Europe's environment and by providing timely, targeted, relevant and reliable information to policy makers and the public.

The organisation has 32 member states and 6 cooperating states. EEA provides and maintains reporting infrastructures for national and international data flows, works in close cooperation with many organisations at European, regional and global level to support the development and implementation of environmental and climate policies. Latvia has been a full member of the EEA and the European Environment Information and Observation Network (Eionet) since 1996. The LEGMC is the EEA and Eionet focal point in Latvia.

GEOLOGICAL SURVEYS OF EUROPE (EUROGEOSURVEYS; EGS)

The EGS aims to create a European geoscience data and competence centre to ensure the sustainable use of subterranean depth resources in Europe in line with the EU's priorities in the fields of economics and resource independence, energy, environment and climate. The EGS provides access to the experience of other countries in the management of subterranean depth information, the establishment and development of information systems, as well as facilitates international cooperation in this field. The organisation also represents the interests of national geological services and the sustainable use of subterranean depth resources in relations with the European Commission. The EGS also coordinates the compilation, data harmonisation and unified availability of geological information at European scale.

EUROPEAN CHEMICALS AGENCY (ECHA)

The European Chemicals Agency promotes safe use of chemicals. It implements the EU's new legislation on chemicals, thereby safeguarding human health, the environment, innovation and competitiveness in Europe.





ABOUT THE LEGMC

/20

Maintains and develops the inventory of chemicals, their assessment, risk management of hazardous substances and proposals to restrict the use of hazardous chemicals by replacing them with less hazardous alternatives. The LEGMC is the Latvian Competent Authority for cooperation with ECHA and participates in its activities, including the Risk Assessment Committee, the Member State Committee and the Biocidal Products Committee.

INTERNATIONAL ATOMIC ENERGY AGENCY (IAEA)

The International Atomic Energy Agency is an intergovernmental forum for scientific and technical cooperation in the field of nuclear energy. It aims to promote the safe and peaceful use of nuclear science and technology, contributing to international peace and security and the achievement of the United Nations Sustainable Development Goals. The Agency provides the opportunity to participate in important international projects related to radiation protection, as well as information exchange and expertise on issues related to nuclear site management, radioactive waste management, etc.

NETWORK OF ANALYTICAL LABORATORIES FOR THE MEASUREMENT OF ENVIRONMENTAL RADIOACTIVITY (ALMERA)

Maintains an international network of laboratories to ensure reliable and timely analysis of environmental samples in the event of accidental or deliberate release of radioactivity. Laboratories that are members of this network have the opportunity to demonstrate their technical competence, participate in proficiency tests and harmonisation of methodologies, which improves the comparability of environmental radioactivity measurement results worldwide.

Common information on available analytical capabilities and knowledge facilitates the identification of laboratories with competence in specific areas of interest, in particular in emergency situations.

EUROPEAN NETWORK OF NATIONAL AIR QUALITY REFERENCE LABORATORIES (AQUILA)

Network of reference laboratories recognised by the Air Quality Directives. These laboratories are legally responsible for quality assurance of air pollutant measurements in their respective Member States, which includes organising national quality assurance and quality control (QA/QC) programmes and participating in European QA/QC programmes. The laboratories are involved in standardisation activities, validation of measurement methods and approval of the type of instruments. Reference laboratories support the implementation of existing EU air policies and advise on changes thereto.

SCIENCE-BASED AND POLICY-ORIENTED EUROPEAN MONITORING AND EVALUATION PROGRAMME (EMEP) WITHIN THE FRAMEWORK OF 1979 CONVENTION ON LONG-RANGE TRANSBOUNDARY AIR POLLUTION

A cooperative programme for monitoring, surveillance and evaluation of the long-range air pollution in Europe. The Convention also includes a Working Group on Effects (WGE), which studies the impact of air pollution in Europe and North America, based on international cooperation in research, monitoring, modelling and mapping, and [the International Cooperative Programme on Assessment and Monitoring of the Effects of Air Pollution on Rivers and Lakes \(ICP Waters\) has been formed.](#)





ABOUT THE LEGMC

/21

CONVECTION SCALE MODELLING CONSORTIUM FOR RESEARCH AND DEVELOPMENT (ACCORD)

Provides financial and scientific support for climate research, promotes the development of new meteorological forecasting tools and the improvement of existing models, contributes to the sharing of data and resources, involving both meteorological services and European academic institutions.

BALTIC MARINE ENVIRONMENTAL COMMISSION HELCOM

HELCOM is a regional environmental policy-making platform established in 1974 to protect the Baltic Sea environment from various sources of pollution. The LEGMC participates in the work of the Commission by engaging in the process of assessment of the pollution load on the Baltic Sea, including providing relevant data, checking data quality and calculations, participating in the preparation of HELCOM reports and expert working groups.

NORD IT WORKING GROUP

Participation in the Baltic-Nordic Meteorological Services IT Managers Forum ensures close cooperation and coordination, exchange of experience and knowledge and information sharing in the field of IT infrastructure, technologies and systems, supervision and monitoring of joint IT development projects, provision of advice and recommendations for technical solutions, as well as development and monitoring of security and protection, availability and continuity of critical services, including provision of backup and redundancy solutions regardless of the primary service delivery location.

Within the scope of its activities, the capital company also represents Latvia's interests in various working groups established by the European Commission and performs the tasks of the European Environment Agency's focal point and the national competent authority for chemicals management in Latvia. Cooperation with the [German Geosciences Research Centre GFZ Helmholtz-Zentrum Potsdam](#) enables the LEGMC to engage in the GEOFON international seismological monitoring network, within the framework of which the seismological monitoring of Latvia is also implemented. A Latvian broadband seismological observation station, which is also included in the GEOFON network, has been installed in the territory of the Slītere lighthouse in Dundaga Municipality. Use of also other GEOFON stations may help in detecting seismic events of both natural and technogenic origin in the Baltic region.





Events and activities

In 2024, the LEGMC actively participated in various international and national events covering the fields of environmental protection, hydrology, geology, chemicals management, air pollution, climate change and GHG emissions. Experts of the LEGMC most often shared their knowledge and experience with the energy, financial and insurance sectors, as well as participated in the events organised by civil protection.

In order to ensure that, according to the amendments to the Cabinet of Ministers Regulation No. 570 of 21.08.2012, as of 2025, all the extractors of mineral resources (raw materials for construction, peat, sapropel and healing mud) shall provide the previous year's mining volumes online in the LEGMC Subterranean Depth Information System, **informative materials have been distributed and information events have been provided to mineral extractors**. For the majority of mineral extraction sites (55%), subterranean depth users were already involved in data entry into the LEGMC Subterranean Depth Information System in 2024.

In 2024, **priority event "Implementation of the requirements of Directive 2020/2184 on drinking water quality" was launched**. It has included discussions with public administration and scientific institutions, as well as on the provision of data and information needed by traders (water users), the implementation process, results to be achieved and their impact on stakeholders. A field assessment of the water supply system has also been organised by meeting with the representatives of water management companies.

In March 2024, the three-year Norwegian Climate Change Policy Grant project successfully concluded, within the framework of which the **LEGMC developed an impact-based warning system**, commenced performance of coastal erosion monitoring and shoreline assessment in Latvia, as well as updated future climate change projections for Latvia based on the latest global climate change scenarios. In addition, the ozone depleting substances and fluorinated greenhouse gases database was developed, the MESAP system was improved, the GHG inventory quality control and assurance system was improved, and the NACE-2 classification was checked against the national statistical system "2-Gaiss" ("2-Air"). At the end of the project, public events were organised to inform the public and stakeholders about the project results and their practical application.





ABOUT THE LEGMC

123

International developments and highlights:

- On 15 February, the LEGMC participated in a meeting organised by the European Chemicals Agency (ECHA). The workshop was dedicated to presenting ECHA's activities, objectives, tasks and to discuss ECHA's new operational strategy for 2024-2026;
- On 15 March, examiners of the LEGMC took part in the 82nd International Scientific Conference of the University of Latvia (UL) "Research and protection of the Latvian water environment".
- On 14 April, 140 scientists and experts from 65 countries of the Intergovernmental Panel on Climate Change (IPCC) arrived in Riga. It was the largest and most ambitious UN event hosted by Latvia since 1991. Within the framework of this visit, the LEGMC together with CLIMAAX colleagues organised a workshop "Workshop - CLIMAAX research and possible links with IPCC work", conducting a presentation on climate risk assessment in Latvia ([Available here](#));
- On 16 April, a meeting was held between representatives of the LEGMC and ECMWF to discuss ECMWF updates, computing power solutions offered by ECMWF and feedback from the LEGMC on the use of ECMWF products in the daily work of the synoptics, modellers and climate working group;
- On 16-18 September, the LEGMC participated in the Life GoodWater IP project and Life is Salaca Baltic project LIFE Platform meeting (almost 40 representatives of LIFE programme nature projects participated);
- On 27 September, the CLIMAAX webinar was held at the LEGMC, where project partners, local governments, various institutions and policy makers discussed Latvia's experience and work done so far in climate change risk assessment;
- On 1-2 October, the Steering Group of the Co-operation between the Nordic and Baltic National Hydrological Services (CHINB) held a meeting at the LEGMC to strengthen cooperation between the region's hydrologists and flood management systems. A key issue for discussion was the changes in hydrological processes due to climate change;
- On 2 October, the LEGMC participated at the 26th Register System Administrators Forum in Bonn, Germany;
- On 22-24 November, the MetCoOp Working Group meeting was held on the premises of the LEGMC to discuss the progress of works and further directions for the HARMONIE numerical weather model development and further adaptation for the Baltic and Scandinavian regions. The meeting was attended by experts from Norway, Sweden, Finland, Estonia and Latvia.





ABOUT THE LEGMC

/24

In order to promote residents' interest in environmental issues, in 2024, the LEGMC participated in:

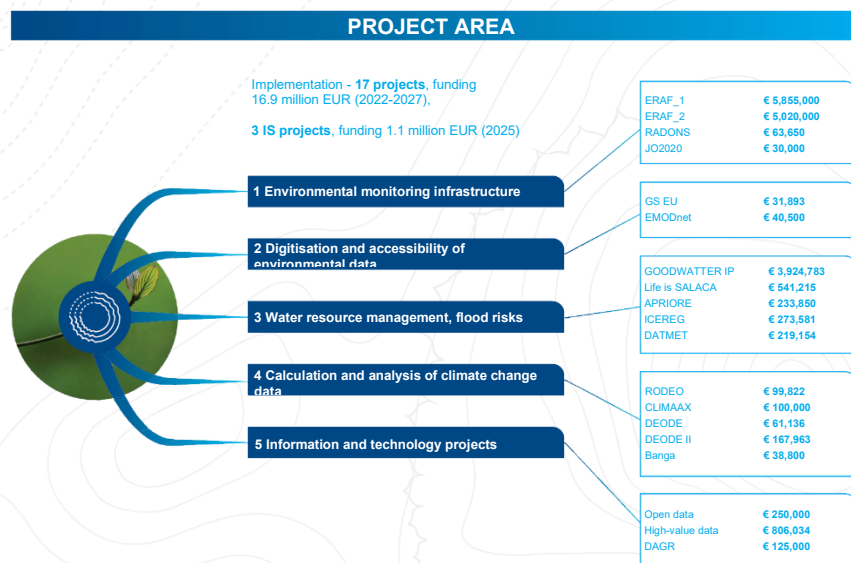
- 💧 **Joint work for clearing up the River Slocene (Tukums)** of fallen trees, rubbish and dams built by beavers;
- 💧 **At the Meadow Festival**, which took place for the second time in Latvia, aimed to update the necessity and importance of natural meadows. Within the framework of the event, the LEGMC had the opportunity to raise awareness and provide information on clean and free-flowing waters and their importance, as well as to tell about the inhabitants that live in rivers;
- 💧 **At the Bream Festival in Bauska**, LEGMC experts told the visitors about the water quality bioindicators and demonstrated what can be caught in the river. Everyone had the opportunity to test their knowledge about and around waters by spinning the wheel of knowledge.





Involvement in international and national projects

In order to strengthen the LEGMC competence centre for the environmental data and to facilitate its development, the capital company is involved in a number of international and national projects, implemented in five areas:



Each project not only seeks the most appropriate solutions in the particular field of activity, but also creates innovations of processes or solutions enabling both more efficient processing and accessibility of environmental and climate data and improvement of the user experience and efficiency of its use.

Overall, the LEGMC works with **20 projects** involving attraction of external funding in the amount of **18 million euro**.





ABOUT THE LEGMC

/26

Major projects implemented or participated in by the LEGMC in 2024 (most of the projects cover a period of several years):

| Project name | Project objective | Achievable results | Total funding (LEGMC share), mln EUR | Project period |
|--|---|---|--------------------------------------|----------------|
| 1 ENVIRONMENTAL MONITORING INFRASTRUCTURE | | | | |
| Improving the water and air monitoring network | Investments in environmental monitoring and control system equipment: hydrological monitoring network, underground water monitoring stations, atmospheric air quality network, radiation monitoring stations, airborne aerosol radioactivity monitoring, air quality modelling tool. | 1) 2 mobile laboratories purchased; 2) Air quality modelling tool developed; 3) Radioactivity monitoring equipment for airborne aerosols purchased. | 5.8 (5.8) | 2024-2028 |
| Providing climate data information | Investments in environmental monitoring and control system equipment: expanding the meteorological network with 10 new meteorological stations and 1 aerological radio probing system; installing a meteorological radar system. | 1) Extension of the meteorological network, including the supply of equipment and facilities for the modernisation of the serological radio probing system; 2) Supply and installation of meteorological radar system. | 5.02 (5.02) | 2024-2028 |
| RADONS - Improvement of the radiation safety control system at the radioactive waste repository "Radons" | Improvement of the radiation safety control system at the radioactive waste repository "Radons". | 1) Supply of equipment to monitor radiation contamination is planned to be supplied; 2) Stationary personnel radioactive contamination control equipment; 3) Portable equipment for controlling alpha and beta radioactive contamination; 4) Electronic personal dosimeters. | 0.06 (0.06) | 2025-2026 |





ABOUT THE LEGMC

127

| Project name | Project objective | Achievable results | Total funding (LEGMC share), mln EUR | Project period |
|---|--|--|--------------------------------------|----------------|
| JO2020 - Nuclear forensic science that would link a radiological crime scene with a nuclear forensic laboratory | Develop methods and procedures for handling radiological crime scenes. | <ol style="list-style-type: none">1) Increase the capacity of the LEGMC Radiation Laboratory in nuclear forensics, to support Latvian law enforcement agencies in radiation detection and sample analysis with the developed methods;2) Cooperate in scientific research work with other laboratories, working together on smear analyses and interpretation of results;3) Increase the staff level of knowledge through visits to cooperating laboratories and scientific conferences in the above field. | 0.03 (0.03) | 2023-2026 |





ABOUT THE LEGMC

/28

| Project name | Project objective | Achievable results | Total funding (LEGMC share), mln EUR | Project period |
|--|---|---|--------------------------------------|----------------|
| 2 DIGITISATION AND ACCESSIBILITY OF ENVIRONMENTAL DATA | | | | |
| A Geological Service for Europe | Develop a permanent cooperation and infrastructure between European geological services for a common geological data solution in Europe, ensuring the availability of up-to-date, high quality and harmonised geological information and services at European level within the context of climate change, the European climate goals and the European Green Deal. | <p>A pan-European infrastructure for the provision of unified geological information. The LEGMC participates in two thematic activities, providing data for the coastal change assessment and the European geological map.</p> <p>Innovations created within the framework of the project: detailed metadata for a geological map of Latvia, including a map of pre-Quaternary sediments at a scale of 1:500 000 and a map of Quaternary sediments at a scale of 1:200 000. The data will be available in English on the European Geological Data Infrastructure (EGDI) portal.</p> | 23.2 (0.03) | 2022-2027 |
| The European Marine Observation and Data Network (EMODnet) project - Round 5.2 | Collect and harmonise European marine data by creating a unified digital map of the European seas. Task of the LEGMC is to provide data on the geology of the Baltic Sea basin in the territorial area of Latvia. | <ol style="list-style-type: none"> 1) Updating and expanding the data submitted in previous project rounds, including the geographical extension of the project area and the involvement of organisations from the Caribbean region; 2) Creation of a new dataset called "Coastal Ribbon" focusing on the geology of the adjacent coastal zone; 3) Harmonisation of data at different scales; 4) Analysis of the datasets and inter-relations, on the basis of which information will be updated and corrected. As a result, new datasets can be created; 5) Continuation of work on the preparation, publication and visualisation of data products and network map services (WMS and WFS) in the unified digital map of the European seas in line with the basic open data principles; 6) Specialists of the LEGMC will continue working on the publication of Latvian data in a separate map browser so that everyone can quickly and easily access the project results. | 2.42 (0.045) | 2023-2025 |





ABOUT THE LEGMC

/29

| Project name | Project objective | Achievable results | Total funding (LEGMC share), min EUR | Project period |
|--|--|--|--------------------------------------|----------------|
| 3 WATER RESOURCE MANAGEMENT FLOOD RISKS | | | | |
| LIFE GoodWater IP project | Improve the quality of water bodies at risk in Latvia by developing and implementing innovative management and governance measures and adapting them to the situation in Latvia. | <p>The participating organisations will implement the measures set out in the river basin management plans (RBMPs) for the Daugava, Gauja, Lielupe and Venta rivers:</p> <ol style="list-style-type: none">1) reduce pollution of water bodies at risk from domestic wastewaters;2) reduce runoff of nutrients and other pollutants from agricultural and forestry lands, especially in winter, to reduce eutrophication and diffuse pollution of water bodies at risk, with a focus on reducing phosphorus inputs;3) reduce the impact of hydrological and morphological changes on water bodies at risk, including those caused by drainage systems and the small hydroelectric power plants (HPPs);4) improve river basin management planning and implementation mechanisms through strategically planned capacity building activities and address gaps in the monitoring system for risk water bodies to ensure more effective implementation of River Basin Management Plans (RBMPs) in future planning cycles;5) raise awareness among different stakeholders and promote their involvement in the implementation of the RBMPs;6) support the responsible authorities in drafting the necessary legislation and regulatory documents and in improving environmental policy. | 14.46 (3.9) | 2020-2027 |





ABOUT THE LEGMC

/30

| Project name | Project objective | Achievable results | Total funding (LEGMC share), mln EUR | Project period |
|---|--|---|--------------------------------------|----------------|
| | | Innovations created within the framework of the project: 1) A broader and improved approach to assessing factors and solutions affecting the ecological quality of water; 2) Ecological flow assessment (methodology) developed. Incorporating it into water use permits will reduce the impact of HPPs on the ecological quality of water in Latvia's rivers. | | |
| APRIORA "Improved risk assessment for strategic water management to reduce emissions of micropollutants in the Baltic Sea Region" | Develop a GIS-based tool to prioritise wastewater treatment plants to be upgraded or plan other impact mitigation measures based on the assessment of risks on the environment and human health. | 1) A system for assessing the risk of pharmaceuticals to the aquatic environment has been developed with three modules: monitoring, modelling, risk assessment; 2) An open-source GIS environmental modelling tool to assess, monitor and model the risk of concentrations of active pharmaceutical ingredients in surface waters has been developed; 3) Capacity building programme on risk assessment system and modelling tool for project target groups has been prepared (training materials, provision of training); 4) Monitoring and risk assessment in pilot areas have been performed; 5) Risk assessment scheme has been evaluated and adapted to the completed pilot study areas; 6) Results of the project are presented to other water management authorities in the Baltic Sea catch basin. | 2.4 (0.2) | 2023-2026 |





ABOUT THE LEGMC

/31

| Project name | Project objective | Achievable results | Total funding (LEGMC share), mln EUR | Project period |
|--|---|---|--------------------------------------|----------------|
| LIFE is Salaca "Implementation of the Water Framework Directive, the Habitats Directive and integrated management measures to improve freshwater quality in the Salaca sub-basin" | Develop a new framework for assessing the ecological quality and status of waters to improve the planning of freshwater management. | <ol style="list-style-type: none">1) Harmonisation of the Water Framework Directive and the Habitats Directive, using the Salaca river basin as a pilot area, in order to gain a common understanding of the ecological and habitat quality, which will allow the Nature Conservation Agency (NCA) and the LEGMC to cooperate more closely in the development of monitoring programmes and management measures. Within the framework of the activity, the LEGMC and the NCA will establish a unified river quality assessment database and a unified field protocol;2) Development of a nature management plan for the Nature Park "Salaca Valley". Coastal forest management measures and monitoring, in which the LEGMC will participate with hydrological monitoring in the Svētupe and Korge river basins;3) Restoration of the overfalls - removal of overgrowth and clogging in the Salaca sub-basin and assessment of the effectiveness of management measures with relation to fish resources and water quality. Before selecting restoration measures, experts from the LEGMC and BIOR will carry out hydromorphological quality assessments along 60 km of the Salaca, Korge and Svētupe rivers to ensure that management measures are implemented in the most suitable locations;4) Ecosystem services evaluation in river and coastal ecosystems;5) A new approach will be used to assess the effectiveness of the restoration of the overfalls: a total of at least 40 km of sample areas will be mapped by UAV before and after the activities;6) Creation of an interactive exhibition in Salacgrīva on the natural values of the River Salaca. | 5.8 (0.54) | 2023-2028 |





ABOUT THE LEGMC

/32

| Project name | Project objective | Achievable results | Total funding (LEGMC share), mln EUR | Project period |
|--|---|--|--------------------------------------|----------------|
| ICEREG - Managing the risk of ice jam floods in regions of Latvia and Lithuania within the context of climate change | Ensure ice jam flood risk management. | 1) A conceptual model of ice flood formation has been developed; 2) Modelling ice jams in the pilot sections of project's rivers; 3) Modelling and mapping of ice flood. Placing maps on the LEGMC website with 0.5%, 1%, 10% flood probabilities for 2050, 2070 and 2100. | 0.65 (0.27) | 2024-2026 |
| UBAMON - Surface and underground water monitoring for the development of river basin district plans 2028-2033 | Monitor surface and underground water monitoring for the development of river basin district plans 2028-2033. | A final report on the surface and underground water quality data has been prepared. | 0.27 (0.27) | 2024-2026 |
| DATMET-Data acquisition studies and development of a national methodology for socio-economic assessment and justification of cost-effective measures to reduce pressures from river dams | Perform data acquisition studies and develop a national methodology for socio-economic assessment and justification of cost-effective measures to reduce pressures from river dams. | 1) Outsourcing contract for data acquisition studies and development of a national methodology for socio-economic assessment and justification of cost-effective measures to reduce pressures from river dams; 2) A study on the welfare benefits of water recreation and ecosystem enhancement for the Latvian residents was carried out to collect data and develop a monetary valuation; 3) A study has been launched to collect data and develop monetary estimates of the welfare benefits of fishing and the changes in these benefits as a result of measures to improve the quality of aquatic ecosystems. | 0.22 (0.22) | 2024-2026 |





ABOUT THE LEGMC

/33

| Project name | Project objective | Achievable results | Total funding (LEGMC share), mln EUR | Project period |
|--|--|--|--------------------------------------|----------------|
| 4 CALCULATIONS AND ANALYSIS OF CLIMATE CHANGE DATA | | | | |
| CLIMAAX - Climate Risk and Vulnerability Assessment Framework and Toolbox | Develop a tool to facilitate the harmonisation and consolidation of Climate Risk Assessment (CRA) practices at European level. | <p>A quality assessment of Latvia's climate risks has been developed, which can be used by representatives of local governments and planning regions, Latvian climate policy makers, civil defence system designers, as well as experts in hydrometeorology and other fields, to help industries and society as a whole adapt to the changing climate as efficiently and effectively as possible. The results will also be used in the implementation of the strategic plans of the Ministry of Climate and Energy.</p> <p>Participation in the project allows the experts of the LEGMC to learn the principles of climate risk identification, their quantitative and quality assessment, as well as risk calculation methodologies. The newly acquired knowledge and skills, as well as the results generated within the framework of the project, help in the implementation of tasks delegated by the State and in communication with customers in different sectors of the national economy, enabling more effective assessment of climate change risks in these sectors.</p> | 19.9 (0.1) | 2023-2026 |
| RODEO - Providing open access to public meteorological data for the development of information products and services | Create meteorological data of unified format and standard at European level. | Developed unified European level format for meteorological data and metadata at European level. The LEGMC works on climatic data rows within the project. Results of the project will be maintained by EUMET-NET, the European Union of Meteorological Services, part of which is also the LEGMC. | 3.2 (0.1) | 2023-2026 |





ABOUT THE LEGMC

/34

| Project name | Project objective | Achievable results | Total funding (LEGMC share), mln EUR | Project period |
|--|---|---|--------------------------------------|----------------|
| DEODE - Developing new parameters for high-resolution numerical weather models | Modelling, monitoring, forecasting and communicating the impacts of climate scenarios and environmental extremes. | <p>Creation of a data lake, digital twin models and user platform. The LEGMC participates in the development of individual model components.</p> <p>Developed methods and tools for forecast assessment, including the creation and maintenance of high-resolution numerical models up to 200 m, creating unprecedented cooperative visualisation and data sharing solutions.</p> <p>Understanding of the components of numerical forecasting models, their implementation and the set of methods used is increased. The results will also be used in the implementation of the strategic plans of the Ministry of Climate and Energy</p> | 11.9 (0.06) | 2022-2024 |
| DEODE II - Destination Earth On-Demand Extremes | Develop new parameters for a high-resolution numerical weather model. | A unified visualisation solution for all components of the DEODE numerical model calculation algorithm has been developed. | 15.5 (0.16) | 2024-2026 |
| BANGA - Monitoring and initiation of the calculation of the sea coastline and the highest wave limit and its buffer zone | The project activities comply with the requirements of the Environmental Protection Law, which defines the monitoring structure, priorities and funding to ensure compliance with the requirements of Latvian and European Union legislation, as well as to implement the activities assigned to the LEGMC within the framework of the draft "Regulations for the Determination, Updating, Validation and Data Recording of the Sea Coastline, Border of the Highest Wave and Buffer Zone". | <ol style="list-style-type: none">1) Establish infrastructure for monitoring and calculating the highest wave of the sea;2) Develop a semi-automated working environment incorporating the software required for the algorithm of detection of the highest wave of the sea developed by the MoEPRD;3) Integrate the above software and infrastructure into the existing LEGMC systems;4) Establish a continuous water level monitoring system for coastal processes and highest wave, including historical water level data as well as the calculation of statistical probabilities of recurrence intervals for extreme high water levels (>2%);5) Validation of the calculation of the highest wave in the LEGMC systems, based on the above methodology and the current digital elevation model of the coastal area with a horizontal resolution of 1x1 m obtained from laser scanning data. | 0.04 (0.04) | 2023-2024 |





ABOUT THE LEGMC

/35

| Project name | Project objective | Achievable results | Total funding (LEGMC share), mln EUR | Project period |
|--|--|--|--------------------------------------|----------------|
| 5 INFORMATION AND TECHNOLOGY PROJECTS | | | | |
| Open data | Open datasets of environmental data prepared and opened to the public at data.gov.lv. | Open datasets of environmental data prepared and opened to the public at data.gov.lv. 1) Hydrometeorological and Climate Information Dataset opened in 2024; 2) In 2025, work is ongoing to maintain and update existing datasets and to make available the Hydrological Forecasts, Air Quality and subterranean depth datasets. Data visualisations on the Environment Portal are also provided within the framework of the project. | 0.25 (0.25) | 2023-2026 |
| High-value data | Open datasets of environmental data prepared and opened to the public at data.gov.lv. | High-value datasets of environmental data prepared and opened to the public at data.gov.lv 1) 2 datasets opened in 2024 - Air and Emissions, including Climate; 2) In 2025, provision of access to three datasets - Waste, Noise (already open), Water - is planned; 3) In 2026, provision of access to two datasets - the Climate Forecast Dataset, the INSPIRE (EU Spatial Information Infrastructure) Dataset - is planned. The project includes data preparation, digital transformation of data (including metadata), ICT linkages between different data sources are formed, as well as the environmental monitoring process will be certified, interactive tools of the Environmental Portal for public information on High Value Data will be added. | 0.8 (0.8) | 2024-2026 |
| DAGR maintenance | Information exchange and interoperability solution in the field of environmental data is maintained. | 1) LEGMC ICT infrastructure data centre of national importance is maintained; 2) SFG information digitisation platform is maintained. | 0.125 (0.125) | 2024-2026 |





GOVERNANCE

3





GOVERNANCE

137

The governance structure of the LEGMC consists of the shareholders' meeting and the Management Board, which is composed of two members. In 2024, the LEGMC was recognised as a large capital company within the meaning of the Law on Governance of Capital Shares of Public Entity and Management of Capital Companies Thereof, however, given that it was not previously classified as such, it has not yet established a Supervisory Board. The highest level decisions are made by the shareholders' meeting.

In 2024, seven shareholders' meetings were held deciding on the approval of the capital company's budgets 2024 and 2025 and procurement plan, the approval and execution of the financial and non-financial objectives, the approval of the 2023 Annual Report, the approval and recall of the members of the Management Board, as well as allocation of the fields of competence and other matters. Information on the time of the shareholders' meetings of members and the agenda is published on the capital company's [website](#).

Members of the Management Board shall be nominated to the Management Board of the capital company in accordance with the procedures provided for in the Cabinet of Ministers Regulation of 7 January 2020 No. 20 "Procedures for Nomination of Members of the Management Board and the Supervisory Board in Capital Companies in which the State or a Derivative Public Person Holds Capital Shares". Operation the Management Board of the LEGMC is regulated by its Rules of Procedure. On 31 December 2024, the Management Board of the capital company was composed of Ms Sigita Škapare, Member of the Board, and Mr Ilvars Tauriņš, Member of the Board.





GOVERNANCE

/38

Sigita Škapare, Member of the Board



Appointed Member of the Board on 16 November 2021.

**Term of office: five years
(16.11.2021 -15.11.2026).**

Areas of supervision: strategic management, sustainability and corporate governance, development and project management, customer management, real estate, infrastructure and subterranean depth management, forecast and climate management, information analysis process management, monitoring provision and laboratory management.

Sigita Škapare holds a Master's Degree in Economics and a Bachelor's Degree in Engineering from the University of St. Gallen (Switzerland), the University of Wismar (Germany) and Riga Technical University.

She has more than 10 years of experience in senior positions in the fields of corporate governance, strategic planning, sustainable development, digital transformation and change management in public and municipal capital companies. Sigita Škapare has ensured the development and implementation of corporate strategies, sustainable development and corporate governance in line with the OECD (Organisation for Economic Co-operation and Development) best practice standards, for example, by winning the Sustainability Index Special Recognition for Fastest Growth in 2019.

Board Ivars Tauriņš, Member of the Board



Appointed Member of the Board on 4 October 2024.

**Term of office: one year
(04.10.2024 -04.10.2025).**

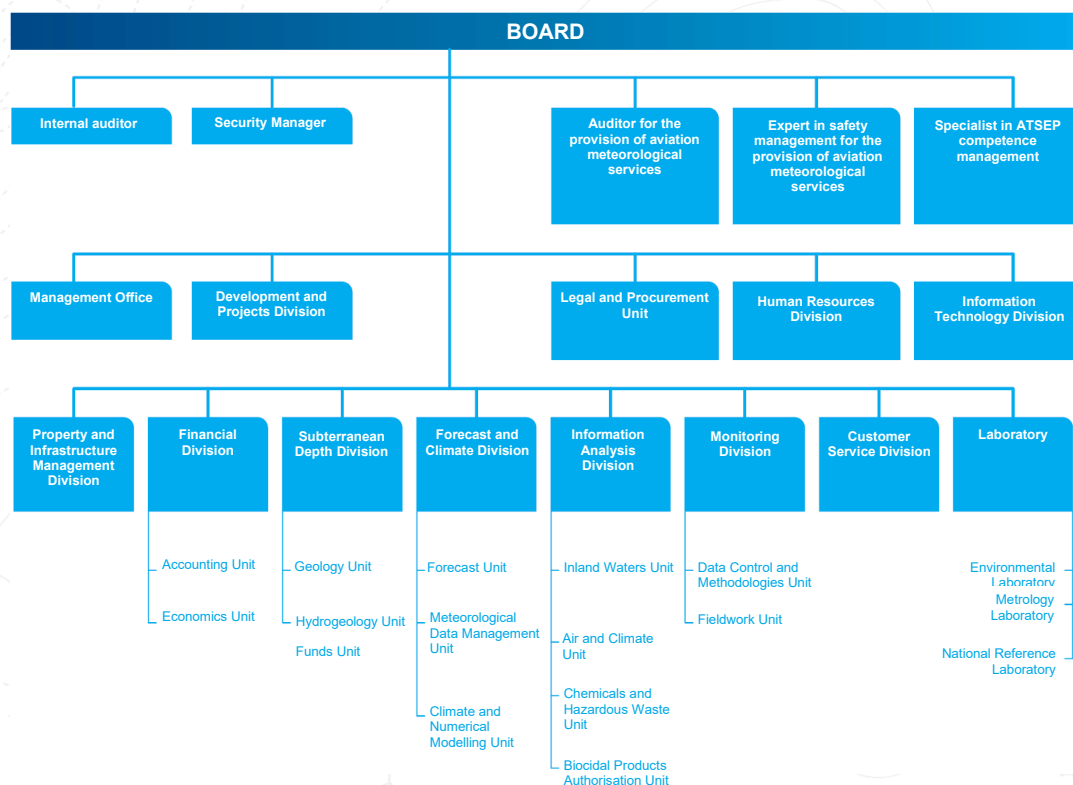
Areas of supervision: legal (including procurement) and financial management, information technology management and digitisation issues, personnel management (including labour protection and working environment), security and risk management.

Ivars Tauriņš holds a Master's Degree in Information Technology and Project Management from the University of Latvia. He has more than 20 years of professional experience in the field of information technology and 13 years of experience in the field of information and cyber security. The above experience has been gained while holding senior positions in both the public administration and the private sector, including on the service with the Cyber National Guard Unit. Ivars Tauriņš' professional activity covers a wide range of competences in strategic IT management and implementation of security solutions.





Organisational structure of the LEGMC as at 31 December 2024





GOVERNANCE

/40

From the viewpoint of environmental data management, the most relevant structural units are the Subterranean Depth, Forecast and Climate, Information Analysis and Monitoring divisions, as well as the Laboratory. These structural units employ **204** employees in total in various positions of the 259 employees of the LEGMC.

Activities of the LEGMC are based on the obligations and rights established by external legislation, as well as on the planning documents developed by the capital company, which define the following basic principles of its activities:



MISSION

To provide quality environmental information and specialised environmental services, as well as quality and timely hydro-meteorological and climatic information for the Latvian economy, society and national security, and to develop new modern products and innovative solutions for sustainable and efficient development of the sectors



VISION

To become a leader in the environmental, geology, hydrology and meteorology sector



VALUES

Responsibility Reliability
Professionalism Development





GOVERNANCE

/41

The LEGMC has also established the following basic corporate governance principles:

- Well-considered relations with stakeholders;
- Sustainable and responsible business;
- Clear roles, responsibilities and accountabilities;
- Ethics and prevention of conflict of interest;
- Internal company culture, efficient processes;
- Transparency and openness.

Conduct of the employees of the LEGMC both in the performance of their daily duties and in their interactions and communications with external customers and business partners is regulated by the [Code of Ethics](#), approved on 19 June 2018. It includes seven principles of ethics:

- Loyalty and transparency;
- Liability;
- Diligence and accuracy;
- Integrity;
- Fairness and impartiality;
- Independence and neutrality;
- Confidentiality.

The Code of Ethics also sets out how to deal with potential conflicts of interest, including in the activities of both public officials and other employees. The LEGMC Ethics Commission has been established to deal with breaches of ethics. In 2023, the Ethics Commission received no complaints of breaches of the principles contained in the Code or other breaches of ethics committed by the employees.

In order to ensure proper management of the capital company, the following management documents have been approved and implemented by the LEGMC:

- Code of Corporate Governance;
- Gender Equality Policy;
- Privacy Policy;
- Remuneration Policy;
- Security Policy;
- Risk Management Policy;
- Internal Control Policy;
- Energy Management Policy;
- Code of Ethics;
- Internal Control Policy;
- Information Systems Security Policy;
- Safety Policy for Aeronautical Meteorological Services.





Management systems

To ensure effective process management, the LEGMC has implemented systems compliant with ISO 9001:2015 (quality management) and ISO 50001:2018 (energy management) standards. On 26 September 2024, the surveillance audit (ISO 9001 and ISO 50001) was successfully carried out with no reprimands. The LEGMC meteorological radar was also visited during the audit.

The scope of activities certified by the LEGMC is environmental monitoring, preparation and provision of environmental and hydrometeorological information, hazardous waste management, radioactive waste and subterranean depth resource management. The ISO 9001:2015 quality management system certificate confirms that the LEGMC has a procedure in place for fulfilling customer requirements, from order acceptance to order completion. The ISO 50001:2018 certificate confirms that the LEGMC has a procedure in place for efficient management of energy consumption and expenses at five of the most important facilities of the capital company - in the LEGMC administrative building in Riga, at 165 Latgales Street, as well as at the facilities situated in Salaspils, Ķekava, Mārupe and Dobeles municipalities, where hazardous and radioactive waste is managed and a meteorological radar is deployed.

The two systems are integrated, and the LEGMC Laboratory has been assessed and accredited according to ISO/IEC 17025:2017.

On 21 November 2024, the Latvian National Accreditation Bureau made a decision to maintain the accreditation of laboratories T-105 (testing and sampling) and K-105 (calibration) by issuing fresh accreditation certificates with registration numbers LATAK-T-105-43-97 and LATAK-K-105-44-97. The scope of accreditation of the T-105 laboratory was both expanded with new methods and narrowed by excluding obsolete methods.

The integrated management system of the LEGMC also includes the information provided within the official statistical programme, in the production of which the LEGMC follows the European Statistics Code of Practice. It is a self-regulatory instrument based on 16 principles relating to the institutional environment, statistical processes and statistical outputs. Each principle has indicators that include standards and good practice. They are used as guidelines and referred to in the process of monitoring of implementation of the Code, thus contributing to the transparency of the European Statistical System, in which the LEGMC is one of the members.

The integrated management system identifies all the major operational processes of the LEGMC, and each of them has an owner of the process in place. This also implements the delegation of liabilities for matters of capital company's influence (including to external stakeholders). In 2024, implementation of the ISO 27001 standard was commenced in relation to ensuring the security requirements of IT systems.





Internal control system

In order to ensure the successful implementation and operation of the integrated management system, the LEGMC Quality Manual has been developed and approved by the Management Board on 18 October 2019. On 14 August 2024, the Management Board approved the updated Quality Manual, including a new section titled "Climate Change and Sustainability". The management of LEGMC is aware that climate change is a major issue that may affect the operation of the capital company. The management of the LEGMC has committed to ensuring that climate change aspects are properly integrated into the management system, as well as in cooperation with customers and stakeholders. In addition, management of the LEGMC emphasises that, by integrating sustainability into the quality management system and the company's operations in general, the capital company can not only improve its efficiency and reduce costs, but also contribute to a positive impact on the environment and society improving its competitiveness and reputation.

Besides, the manual sets out requirements in the areas of document management, information technology management and information systems security management, overall security and safety management, strategic management, infrastructure and ensuring of working environment, and ensuring of internal control. The Quality Manual also sets out key principles in the areas of corporate culture and ethics, personnel management, document management, labour protection, facility and equipment provision, communications and information technology provision, procurement and material resources management, accounting and financial management, customer service, communication and other. In addition, a Laboratory Quality Manual has been developed.

In order to ensure a systematic implementation of the actions provided for in the Manual, on 01.02.2023, the Quality Policy has also been approved by the Management Board of the LEGMC.

With regard to the internal control system, the LEGMC Quality Manual includes a risk control function and an internal audit function, as well as the necessity to continuously take corrective and preventive actions for the prevention of specific processes or services.





GOVERNANCE

/44

The LEGMC risk register included 97 risks that are managed in the Risk Plan 2024, 2025-2026; taking into account proposals from risk owners, 91 risks are included. They include:



Strategic risks
8



Operational risks
72



Compliance risks
9



Financial risks
2

On 26 July 2023, the Management Board of the LEGMC approved the Internal Control Policy. It highlights safety and security as particularly important factors in the internal control system - especially with regard to:

- Information systems and related technological resources;
- Employees;
- Protection of the facilities of the LEGMC and the security, confidentiality and availability of the services provided;
- Planning of operational continuity of the critical infrastructure and security and other aspects.

Timely availability of information, identification and elimination of risks, timely identification of errors and performance of necessary improvements in the activities of the capital company and other activities, which ensure effective internal control that is in the public interest are emphasized as the key basic principles of internal control.





CORPORATE GOVERNANCE STATEMENT

4





CORPORATE GOVERNANCE STATEMENT

/46

The LEGMC was not classified as a large capital company until 2024. In 2024/2025, a legal and economic assessment was carried out in line with the requirements of the State Administration Structure Law, which will serve as basis for further management and development of the capital company. Nevertheless, the LEGMC already complies with the basic principles of the [Corporate Governance Code](#), developed by the Corporate Governance Advisory Council established by the Ministry of Justice.

Meeting the criteria are colour coded as follows:

Green - met

Yellow - partially met

Red - not met

Grey - not applicable

| No. | Basic principle | Meeting at the LEGMC | |
|-----|--|--|--|
| 1 | The company has an up-to-date strategy in place that sets out its objectives and progress towards the long-term value increase | <p>According to the decision of the extraordinary shareholder meeting of the LEGMC dated 4 October 2024, a legal and economic assessment of the compliance of the functions and services of the LEGMC with the criteria of Section 88 of the State Administration Structure Law was carried out. Conclusions of the evaluation will serve as a basis for further improvement of the company's operations, focusing on optimisation and strategic specialisation.</p> <p>In order to ensure focused development, financial and non-financial objectives and a corresponding work plan are set every year and agreed with the shareholder of the capital company (see page 16 of this Report for details).</p> <p>On 8 January 2024, the financial and non-financial objectives for 2024 of the LEGMC were approved by a decision of the shareholder MCE. Their implementation is monitored, and the results are submitted to the State Chancellery, which provides its opinion. At the time of preparation of this Report, opinion of the State Chancellery has not been received yet, but the 2024 results can be assessed as good according to the execution.</p> | |





CORPORATE GOVERNANCE STATEMENT

147

| | | | |
|---|--|---|--|
| 2 | The company develops an internal code of culture and ethical conduct that serves as a standard of behaviour for the company's management and employees | <p>The LEGMC has defined its vision, mission, values and basic principles of the operation, as well as developed a Code of Ethics (approved by the decision of the LEGMC Management Board on 19.06.2018) and established an Ethics Commission to deal with possible breaches of ethics decide on further actions (see details on page 41). Ethical issues are also monitored on a daily basis.</p> <p>Training is organised on issues related to the ethical operation of the capital company, paying particular attention to anti-corruption issues. In 2024, 13 employees received training on "Prevention of Conflict of Interest and Professional Ethics of Public Officials". Periodic training (every 1-3 years, depending on changes in functions or personnel, as well as based on external legal requirements) is organised for the employees with public official status and for the members of the Ethics Commission.</p> | |
| 3 | The company has an internal control system in place, the effectiveness of which is supervised by the Supervisory Board | <p>The LEGMC does not have the Supervisory Board in place at the moment, however, within the framework of the legal and economic assessment referred to in Paragraph 1, both the overall models for the future development of the LEGMC and, inter alia, the necessity to establish the Supervisory Board are assessed.</p> <p>At the same time, the LEGMC has an internal control system, the functioning of which is supervised by the Management Board.</p> <p>On 26.07.2023, the Management Board of the LEGMC has approved the Internal Control Policy, which sets out the basic principles for internal control in the capital company.</p> <p>The LEGMC has established an integrated management system according to the requirements of international ISO standards (9001:2015 (quality management) and ISO 50001:2018 (energy management)), including the integrated management system also provides for the operation of the internal control system, which includes risk management, internal audit and corrective and preventive actions as necessary.</p> <p>On 08.01.2019, the LEGMC Management Board has approved the Risk Management Policy, which is used to identify and assess risks specific to the capital company and to determine and implement appropriate risk mitigation measures. In order to ensure effective risk management, the LEGMC Quality and Risk Management Commission has been established, which, inter alia, oversees the implementation of the Risk Management Policy, identifies major risks and their acceptable values, provides support to risk managers and performs other supervisory functions.</p> <p>The LEGMC has an internal audit function in place, which, given that the capital company does not have a Supervisory Board, reports directly to the Management Board and assesses various areas and processes of the capital company's activities, providing independent assessment and proposals for process improvement.</p> | |
| 4 | The company identifies, assesses and supervises the risks associated with its operations | <p>The LEGMC identifies and assesses risks, determines and implements appropriate risk mitigation measures in accordance with the Risk Management Policy (see previous paragraph, as well as details on page 44).</p> | |





CORPORATE GOVERNANCE STATEMENT

/48

| | | | |
|---|--|---|--|
| 5 | The company has an internal audit structural unit in place that independently and objectively assesses the company's operation | <p>The LEGMC has an internal audit function in place, which, given that the capital company does not have a Supervisory Board, reports directly to the Management Board and assesses various areas and processes of the capital company's activities, providing independent assessment and proposals for process improvement. The internal auditor is liable, inter alia, for controlling the effectiveness of the integrated management system and assessing the compliance of operations with the requirements of the relevant ISO standards.</p> <p>In 2024, the internal audit function of the LEGMC submitted 49 internal audit reports to the Management Board, including three in accordance with the requirements of EU Regulation 2017/373. The audits reviewed key risk management processes - strategic, financial, compliance and operational risk assessments - as well as verified the information systems security compliance with the requirements of ISO 9001:2015/50001:2018. Furthermore, the audits covered ensuring operational continuity of the critical infrastructure and the assessment of radiation security procedures. The Internal Auditor provided independent proposals for corrective and preventive actions, which serve as a basis for further process improvements.</p> | |
| 6 | The company has an independent external auditor | An independent external auditor is engaged to audit the annual reports of the LEGMC. The LEGMC prepares the Annual Report according to the requirements of the Law on Annual Statements and Consolidated Annual Statements, and the auditor of the Annual Report 2024 is the LLC (SIA) "AUDITORFIRMA PADOMS". Annual reports are available on the website of the LEGMC . | |
| 7 | The company ensures transparent procedures for the election and recalling of Members of the Supervisory Board | Not applicable, as the LEGMC does not have a Supervisory Board body in place. As indicated in Paragraph 3, the operational model of the LEGMC, including the establishment of the Supervisory Board, is under assessment at the time of preparation of this Report. | |
| 8 | Members of the Supervisory Board together have the relevant experience and competence | Not applicable, as the LEGMC does not have a Supervisory Board body in place. As indicated in Paragraph 3, the operational model of the LEGMC, including the establishment of the Supervisory Board, is under assessment at the time of preparation of this Report. | |
| 9 | The company's Supervisory Board consists of independent Members of the Supervisory Board | Not applicable, as the LEGMC does not have a Supervisory Board body in place. As indicated in Paragraph 3, the operational model of the LEGMC, including the establishment of the Supervisory Board, is under assessment at the time of preparation of this Report. | |





CORPORATE GOVERNANCE STATEMENT

/49

| | | | |
|----|--|--|--|
| 10 | The company has a remuneration policy in place | <p>The Remuneration Policy has been examined by the LEGMC Management Board on 13.12.2023, and it was approved by the extraordinary shareholders' meeting on 20.12.2023. The Remuneration Policy is oriented towards ensuring competitive remuneration, setting clear remuneration principles for equivalent level positions, as well as providing a motivational approach to facilitate employee engagement in the implementation of the capital company's strategy, achievement of financial and non-financial objectives. A list of positions and their remuneration has been developed according to the policy.</p> <p>The policy does not include determination of the remuneration of the Members of the Management Board, which is determined in accordance with external legal framework. The remuneration of the Members of the Management Board effective in 2024 is set by the Decision of the LEGMC shareholder's meeting of 04.10.2024.</p> <p>Information on the actual remuneration of the Members of the Management Board is published in the Annex to the Annual Report (see notes to the Annual Report, Paragraph 4).</p> | |
| 11 | Organisation of the work of the Supervisory Board is defined and understood in the company | Not applicable, as the LEGMC does not have a Supervisory Board body in place. As indicated in Paragraph 3, the operational model of the LEGMC, including the establishment of the Supervisory Board, is under assessment at the time of preparation of this Report. | |
| 12 | The Supervisory Board makes informed and well-considered decisions | Not applicable, as the LEGMC does not have a Supervisory Board body in place. As indicated in Paragraph 3, the operational model of the LEGMC, including the establishment of the Supervisory Board, is under assessment at the time of preparation of this Report. | |
| 13 | Members of the Management Board and of the Supervisory Board are clearly aware of the appearance of a conflict of interest and are informed of the necessary action to be taken in the event of a conflict of interest | <p>Members of the LEGMC Management Board participate in trainings on anti-corruption issues, including issues concerning prevention of the conflict of interest, on regular basis. Action to be taken in case of conflict of interest is also described in the Rules of Procedure of the Management Board and in the LEGMC Code of Ethics, which is also binding on the LEGMC Management Board.</p> <p>In 2024, there were no situations in which a Member of the LEGMC Management Board was prevented from taking part in decision-making or from performing their direct duties as an official due to a conflict of interest.</p> | |
| 14 | The company provides shareholders with timely information on the proceedings of the shareholders' meeting, providing all the information required for decision-making | LEGMC has only one shareholder, which is provided with information on upcoming shareholders' meetings and their agendas in timely manner. | |
| 15 | The Company promotes effective shareholder involvement in decision-making and the broadest possible participation of shareholders in shareholders' meetings | LEGMC has only one shareholder, thus, broader involvement of shareholders is not applicable to the capital company. However, the LEGMC provides its shareholder with as detailed information as possible for effective decision-making. | |
| 16 | The company develops and discusses a dividend policy with shareholders | As the equity of the LEGMC is less than the share capital, in accordance with Section 161(4) of the Commercial Law, this basic principle is not applicable. | |





CORPORATE GOVERNANCE STATEMENT

/50

17

The company informs shareholders and other stakeholders about the company's business, financial performance, governance and other relevant issues on regular basis and in timely manner

The LEGMC publishes on its website information describing the capital company and its activities, provides comprehensive information on the available services, suggestion and complaint mechanisms, existing governance documents (key policies), governing bodies, their composition and documents governing operations of the LEGMC, financial and non-financial performance, etc. Information on financial performance is available [on the website of the LEGMC](#).

The website also contains summary information in English, mainly focusing on making relevant information available to the international cooperation partners and other stakeholders.





STAKEHOLDER INVOLVEMENT

5

00080715

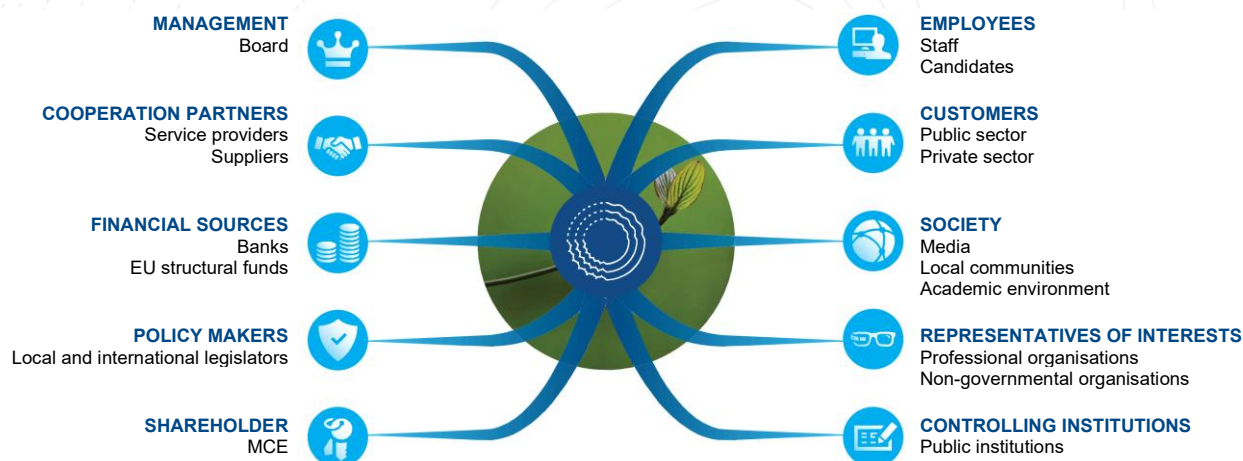




STAKEHOLDER INVOLVEMENT

152

The key stakeholders of the LEGMC can be grouped into internal and external stakeholders. The shareholder of the LEGMC, the management and employees of the capital company (including potential employees applying for certain positions) shall be regarded as the internal stakeholders. Customers, business partners, policy makers, controlling institutions, funders, as well as interest representatives and general public shall be regarded as the external stakeholders.



LEVELS OF COOPERATION

Cooperation with stakeholders takes place at the following levels of cooperation depending on the topic and relevance to the operations of the LEGMC - consultation, negotiation, engagement, partnership

PRIVACY POLICY

The LEGMC has a privacy policy in place, and the principles of personal data protection are complied with, ensuring compliance of operations with the binding regulatory enactments, as well as protecting personal information of the Company's customers.

FEEDBACK

The LEGMC encourages its customers to provide feedback through various channels so that the Company can continuously improve the quality of its services, documents and processes.





STAKEHOLDER INVOLVEMENT

/53

Cooperation with stakeholders takes place on daily basis by providing work, services, engaging in the drafting of laws, etc., but, for the purposes of building content of the Sustainability Report, the LEGMC also conducted a survey of both internal and external stakeholders.

52 employees of the LEGMC and 21 external respondents answered the questions of the survey. Respondents were asked to rate the initially identified 13 areas of sustainability potentially relevant for the LEGMC within the framework of the survey, which were further summarised in a relevance matrix (see next title of the Report).

Along with the assessment of the areas of sustainability, the LEGMC also received stakeholders' recommendations for operational development within the framework of the survey, including the following suggestions:

- ◆ To promote the use of open environmental data for monitoring and calculation of state commitments;
- ◆ To offer more data analytics (e.g., with regard to water resources) and educate data users about the information available and how to use it;
- ◆ To increase customer support capacity and expand the range of commercial services;
- ◆ To promote cooperation with academic research institutions, as well as involvement in international researches;
- ◆ To improve the availability of environmental data and analytics thereof for users of different levels, including the development of different types of databases;
- ◆ To evaluate the linking of environmental data with the maps and information available on the Latvian geoportal, as well as to ensure the digitisation of all the environmental data in the GIS system;
- ◆ To provide availability of forecasts and other data in the application programming interface (API) to facilitate their further use in various sectors;
- ◆ To introduce into the subterranean depth database the impact of use thereof on national emission commitments, assessment of eco-services;
- ◆ To improve internal motivation system, staff growth opportunities and internal knowledge transfer.





STAKEHOLDER INVOLVEMENT

/54

In 2024, including taking into account the stakeholder feedback, the LEGMC further developed data management and cooperation processes in the area of subterranean depth by concluding interdepartmental agreement with the State Environmental Service on improving documentation and information flow in line with the recommendations of the State Audit Office on 28 June. Maintenance of the State Geological Fund information digitisation platform created within the framework of the European Regional Development Fund (ERDF) project "Data Dissemination and Management Platform (DAGR)" was provided using the data centre of the National Library of Latvia. Implementation of the requirements of Directive (EU) 2020/2184 on drinking water quality was also launched in cooperation with public administrations, scientific institutions and traders. In the IT area, the LEGMC continued developing the publication of open and high-value dataset on the Open Data Portal, improved the development environment based on GitLab technologies and commenced the certification process according to ISO/IEC 27001:2022, ISO/IEC 27002:2022 and ISO/IEC 27001:2022/ Amd 1:2024 standards, strengthening the information security requirements.

Important measures have also been taken to improve process management and ensure coherent functioning. By introducing or updating more than **240** of internal regulatory enactments and by complementing the document management system with documentation supporting the processes, the company has provided the necessary structure and tools for effective process management and monitoring.





KEY AREAS OF SUSTAINABILITY

6

Sustainability Report 2024



LATVIAN ENVIRONMENT,
GEOLOGY AND METEOROLOGY
CENTRE (LATVIJAS VIDES,
GEOLOĢIJAS UN
METEOROLOĢIJAS CENTRS)

KEY AREAS OF SUSTAINABILITY

/56

While identifying and assessing the areas of sustainability of potential relevance to the LEGMC, the UN Sustainable Development Goals (SDGs) related to the services provided by the capital company and their potential impact both now and in the future were considered.

Initially, objectives were selected that directly or indirectly relate to the services provided by the LEGMC. These include the following global commitments:

LEGMC PRIORITY SUSTAINABLE DEVELOPMENT GOALS



KEY AREAS OF SUSTAINABILITY

157

All or practically all of the selected SDGs can be covered by the following actions of the LEGMC:

- Environmental monitoring;
- Water analysis;
- Hydrological and meteorological forecasts;
- Meteorological and climate information;
- Hazardous waste management.

The largest number of activities and services provided by the LEGMC is attributable to three objectives:

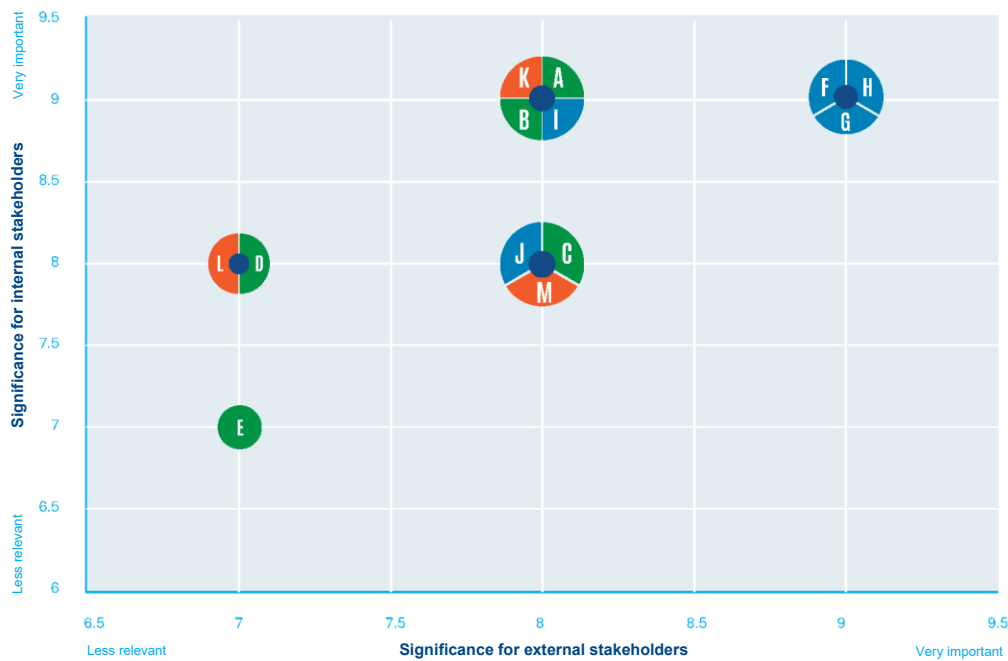
- **Sustainable cities and communities (Goal 11)**, which includes ensuring and creating a favourable living environment, managing natural disaster risks;
- **Responsible consumption and production (Goal 12)**, which deals with the management of chemicals and hazardous substances and waste minimisation, or reduction of the negative impacts of different types of activities;
- **Climate action (Goal 13)**, which not only includes action by the world's countries and businesses to reduce their negative climate impacts (in the form of GHG emissions), but also includes forecasting climate change and implementing adaptation measures.

Based on the directions of the LEGMC and the related UN Sustainable Development Goals, 13 potential areas of sustainability were identified in 2022, and questionnaires for external and internal stakeholders were developed. Respondents were asked to rate each of the proposed areas of sustainability according to its relevance to the operation and development of the LEGMC, and were encouraged to express their opinions on solutions that the company could implement to improve its operations and continue its development by improving its sustainability performance (see recommendations in the previous title). The respondents were asked to rate the 13 potential areas of sustainability on a scale of 1-10 according to the importance in their opinion (not important - 1; very important - 10).

Vision of the internal and external stakeholders on the key areas of sustainability of the LEGMC according to the conducted questionnaire survey is reflected in the importance matrix. The table below reflects more details on the aspects covered by each of the key areas.

KEY AREAS OF SUSTAINABILITY

/58



- A** Support for national climate and environmental policy planning and implementation
- B** Support for municipal development planning in the area of environmental aspects
- C** Support for state and municipal civil protection planning and implementation
- D** Support for the private sector in identifying, assessing and managing environmental risks
- E** Support for the financial sector in identifying and assessing risks in the customer environment
- F** Staff retention and development
- G** Attracting talents
- H** Service availability, quality and data reliability
- I** Engagement in the development of the area of environmental research and of young specialists
- J** Contribution to improvement of the society's life quality
- K** Financial stability
- L** Service development
- M** Efficient, open and ethical capital company's governance

Environmental impact

Social impact

Economic impact



| | |
|----------|---|
| A | Support for national climate and environmental policy planning and implementation Thanks to the analysis of environmental data (including water, soil, air pollution, etc.), hydrometeorological forecasts in the short and long term (up to 2100), activities in the field of subterranean depths performed by the LEGMC, policy planners and implementers are able to define and implement targeted policy measures to implement the national climate policy in line with global and European Union objectives. |
| B | Support for municipal development planning in the area of environmental aspects The flood risk and flood hazard maps developed by the LEGMC, summarised information on subterranean depth resources, observation data from implementation of the environmental monitoring programmes (Air and Climate, Water and Earth), and other information managed by the LEGMC allow the municipalities to plan their territory more effectively and define the development of the municipality by identifying areas with higher environmental risks. This enables local governments to define more effectively which areas are unsuitable for living or active commercial activities, or to take appropriate measures for their development (e.g., land reclamation, building of dams, etc.). |
| C | Support for state and municipal civil protection planning and implementation The hydrological (high water, flood, wind flood), meteorological (rainstorms, storms), climatological (severe frost, heat, drought), and seismological information available to the LEGMC, as well as the experience in radioactive and hazardous waste management allow the state and municipal authorities to develop effective civil protection plans and measures for timely prevention of disasters. |
| D | Support for the private sector in identifying, assessing and managing environmental risks The services provided by the LEGMC in the field of environment, including subterranean depths and meteorology and hydrology, information and data on long-term climate change in Latvia, as well as a wide range of laboratory services, allow private sector companies to identify timely environmental risks associated with their activities (e.g., by not locating production facilities in flood-prone or contaminated or potentially contaminated areas or taking timely actions to improve these areas to make them suitable for operations). This allows the private sector to mitigate the risks associated with a significant depreciation of its assets. |
| E | Support for the financial sector in identifying and assessing risks in the customer environment The information and data summarised by the LEGMC on environmental phenomena, meteorological forecasts and long-term climate changes in Latvia allow financial sector institutions to effectively assess the potential environmental risks of their customers (e.g., manufacturing companies, real estate companies, agricultural companies, etc.), which may reduce the value of the borrower or investment object in the medium or long term. This enables the financial sector to make informed decisions on granting or price of funding, as well as to provide feedback to the customer on the risks inherent thereto. |
| F | Staff retention and development In order for the LEGMC to be able to perform its duties efficiently and provide reliable and accurate information to public authorities and customers, it is essential that the capital company is able to retain qualified staff and promote their growth, motivation and well-being in the working environment. |
| G | Attracting talents Operations of the LEGMC are becoming more and more extensive, and it is essential to attract staff with high qualifications in the areas of environmental science, data analysis and digitisation to provide quality services. It is therefore essential to create relevant environment, favourable for attraction of talents. |

| | |
|---|---|
| H | Service availability, quality and data reliability For the public authorities and customers to be able to effectively use the information prepared by the LEGMC for decision-making, it is essential that the information provided by the capital company is (a) technically available to the customer within the required time, (b) of good quality and comprehensible, and (c) reliable. |
| I | Engagement in the development of the area of environmental research and of young specialists The LEGMC cooperates with the institutions of higher education and other educational institutions, offering internships, as well as training specialists in the areas of environment (hydrometeorology and climate, hydrology, atmospheric air and surface water quality assessment, chemicals and mixtures management) and earth sciences (geology, hydrogeology). |
| J | Contribution to improvement of the society's life quality Thanks to the information summarised, analysed and provided by the LEGMC, the state, local governments and commercial enterprises, as well as every member of society have the opportunity to make informed and well-considered decisions that allow to forecast weather-related impact factors, reduce environmental pollution, emissions and other environmentally harmful factors, thus contributing to the overall long-term improvement of the quality of life of society. The LEGMC is created and developed as a competence centre for the environmental data providing the necessary information to identify opportunities for improving the quality of life and to make appropriate decisions. |
| K | Financial stability The LEGMC is a state capital company, and it is essential for this company to ensure that its financial situation is stable and that it is able to allocate resources efficiently, assess and manage financial risks |
| L | Service development In order to contribute to the financial stability and long-term operation of the capital company, as well as to use the data held by the capital company as efficiently as possible and to make them available to the widest possible range of users, it is essential for the LEGMC to identify new opportunities in the provision of services, customer expectations with regard of the availability, reliability, quality of services and information and relevance thereof to their needs. |
| M | Efficient, open and ethical capital company's governance Given that LEGMC is a state capital company and performs tasks delegated, inter alia, by the state, it is essential to ensure a high level of corporate governance, including promoting and improving the efficiency of operations and management processes, understanding of corporate governance and compliance, ethical conduct in all the activities implemented by the capital company, risk management, change and stakeholder management. |

KEY AREAS OF SUSTAINABILITY

/61

Both groups of stakeholders have rated the potential areas of sustainability on a scale of 7 to 10, indicating that all the areas of sustainability initially identified are relevant to the activities of the LEGMC and have been correctly selected. The external and internal stakeholders' assessment of the key areas of sustainability of the LEGMC is fairly similar, but there are some areas that are rated higher by the internal stakeholders than the external stakeholders:

- ◆ Support for national climate and environmental policy planning and implementation (A)
- ◆ Support for municipal development planning in the area of environmental aspects (B);
- ◆ Support for the private sector in identifying, assessing and managing environmental risks (D);
- ◆ Engagement in the development of the area of environmental research and of young specialists (I);
- ◆ Financial stability (K);
- ◆ Development of commercial services (L).

Whereas, both groups of stakeholders have given the lowest importance to the support that the LEGMC provides or could provide specifically to the financial sector in identifying and assessing risks in the customer environment (E). It is significant that the assessment of customer risks, including from the viewpoint of the environmental impact, is becoming increasingly important in the activities of the financial sector, therefore, the relatively low rating of this area may be not an indication that the LEGMC should not focus on this area, but rather more actively develop its position and offer to the financial sector and develop cooperation with representatives of this sector.

The following titles of the report reflect the performance and vision of the LEGMC in each of the above areas of sustainability, except for governance (M), which is already covered in the title on the LEGMC governance and the Corporate Governance Statement on pages 37 to 44.

Areas D and E are combined in the following titles, as customers of both financial and non-financial private sector require similar types of support provided by the LEGMC.

ENVIRONMENTAL IMPACT



7





ENVIRONMENTAL IMPACT

/63

The main fields of operation of the LEGMC are related to the summarization, accumulation, analysis and publication of environmental data and the provision of related commercial services. More broadly, thanks to the activities of the LEGMC and the availability of accurate, reliable and easy-to-use data, public and private data users can make more considered decisions about their actions in the short-term (weather impacts), long-term (climate change impacts), strengthening civil defence (weather impacts on the provision of civil defence measures, in case of especially extreme weather conditions), etc.

Thus, it can be considered that, thanks to the efficient operation of the LEGMC, the public and private sectors can make more appropriate and better decisions.

At the same time, the LEGMC's own environmental impact manifests itself in two directions:

- 💧 **Pollution reduction.** Responsible management of hazardous and radioactive waste, without causing further harm to the environment. Although the LEGMC does not generate such waste itself, traders and natural persons are required to deliver it for management, and, as a result, it ends up in the LEGMC landfill "Zebrene". For example, in 2023, a significant amount of hazardous waste (over 700 tonnes) was accepted, including asbestos slate waste. The LEGMC ensures that such waste is disposed of appropriately without causing environmental harm in a broader area;
- 💧 **Energy consumption.** In order to ensure successful operation of the LEGMC, the capital company consumes electricity (including for the operation of observation stations), thermal energy for heating buildings under its management in the winter season and for the provision of hot water, as well as fuel for the transport fleet.





ENVIRONMENTAL IMPACT

/64

According to the data available to the LEGMC, the following trends in energy consumption have been observed in recent years:

| Type of energy resource | 2021, MWh | 2022, MWh | 2023, MWh | 2024, MWh |
|---|-----------|-----------|-----------|-----------|
| Purchased electricity | 987.1 | 1,063.0 | 1,018.5 | 1,044.4 |
| Purchased thermal energy | 1383.0 | 1199.0 | 1082.0 | 1158.0 |
| Self-generated thermal energy from renewable energy sources | 106.0 | 159.0 | 157.0 | 123.0 |
| Diesel used for transport | 545.0 | 622.0 | 571.0 | 484.0 |
| Petrol used for transport | 21.0 | 21.0 | 70.0 | 107.0 |
| Electricity used for transport | 0.0 | 0.0 | 3.4 | 5.1 |
| Total | 3,042.1 | 3,064.0 | 2,902.0 | 2,921.6 |

LEGMC uses renewable energy sources in heating (see row "self-generated thermal energy from renewable energy sources" - biomass pellets are used in heating), but the capital company has not concluded a contract for the purchase of renewable electricity, thus not distinguishing the share of renewable sources in the total consumption.





ENVIRONMENTAL IMPACT

/65

The LEGMC has calculated the Scope 1 and Scope 2 greenhouse gas (GHG) emissions from the energy consumption of the capital company for the years 2022-2024 (in accordance with the GHG emission protocol methodology). The calculation includes data on energy consumption in the administrative building of the LEGMC in Riga, at 165 Latgales Street, as well as in other buildings and facilities: Salaspils nuclear reactor, radioactive waste storage facility "Radons", meteorological stations in Skrīveri and Liepāja, hazardous waste landfill in Zebrene, meteorological observation radar, hydroelectric power stations, air stations, weather stations (precipitation, cloud conditions, pressure, temperature), office buildings in Liepāja, Daugavpils and Skrīveri, as well as all the road transport and electric car consumption.

Scope 2 emissions are calculated based on geographical (location) emission factors. A calculation based on market instruments has not been performed yet, but is planned to be included in future periods.

| Emission source | 2022, tCO ₂ e | 2023, tCO ₂ e | 2024, tCO ₂ e | Changes 2024 vs 2023 |
|---|--------------------------|--------------------------|--------------------------|----------------------|
| Scope 1 emissions | 180.8 | 181.0 | 168.7 | -7% |
| - F-gases | - | 1.0 | 3.5 | 267% |
| - Fuels | 5.4 | 5.4 | 4.4 | -18% |
| - Diesel | 169.9 | 155.9 | 132.3 | -15% |
| - Petrol | 5.5 | 18.8 | 28.5 | 52% |
| Scope 2 emissions (by location) | 145.7 | 112.8 | 119.2 | 6% |
| - Electricity | 55.9 | 45.6 | 47.0 | 3% |
| - Thermal energy | 89.8 | 67.2 | 72.2 | 7% |
| Total emissions (Scopes 1 and 2) | 326.5 | 293.9 | 287.9 | -2% |





ENVIRONMENTAL IMPACT

/66

In 2024, total GHG emissions have decreased by **2%** compared to 2023, with the process being mainly driven by a drop in emissions from diesel (-15%) and fuels (-18%). At the same time, petrol emissions increased significantly (+52%), driven by short-term four-wheel drive vehicle rentals and the use of E95 fuel. Scope 2 emissions increased by 6%, mainly due to consumption of thermal energy. F-gases used in air-conditioning systems were not accounted for until 2022, but are included in the calculations from 2023.

The company's emission intensity in 2024 has decreased despite an 11% increase in turnover and a 2% increase in the number of employees. Emissions per 1 million EUR have decreased from 30.9 to 27.4 tCO₂e (**-11%**), but emissions per employee - from 1.16 to 1.11 tCO₂e (**-4%**). This indicates on lower environmental impact with growing company's operation.

| Emission intensity | 2022 | 2023 | 2024 | Changes 2024 vs 2023 (%) |
|--|-------|-------|-------|--------------------------|
| Turnover, million EUR | 8.5 | 9.5 | 10.5 | 11% |
| Number of employees | 252 | 253 | 259 | 2% |
| Total emissions, tCO ₂ e | 326.5 | 293.9 | 287.9 | -2% |
| Emissions per million EUR (tCO ₂ e/EUR) | 38.4 | 30.9 | 27.4 | -11 % |
| Emissions per employee (tCO ₂ e) | 1.3 | 1.16 | 1.11 | -4% |





Support for national climate and environmental policy planning and implementation

In order to develop and improve the range and quality of information available to the public, to improve the availability, quality of services and data reliability, and to facilitate their use in making decisions relevant to the state, local governments and society in general, the LEGMC actively participates in the development of external laws and regulations. Thanks to the analysis of the environmental data (including water, soil, air pollution and other areas), hydro-meteorological forecasts in the short and long term (up to 2100) and activities in the area of subterranean depths, policy planners and implementers are able to define and implement targeted policy measures to implement national climate policy in line with global and European Union objectives.

In 2024, the LEGMC has provided proposals for the development or improvement of the following external regulatory enactments:

- Directive (EU) 2024/2881 of the European Parliament and of the Council of 23 October 2024 on air quality and cleaner air for Europe (recast), which entered into force on 10 December 2024;
- Climate Law;
- Air Protection Law;
- Law on Sustainability Disclosures;
- Amendments to the Law On Subterranean Depths;
- Cabinet of Ministers Regulation No. 816 of 17 December 2024 "Regulations Regarding the Official Statistics Programme 2025-2027";
- Cabinet of Ministers Regulation No. 883 of 17 December 2024 "Regulations Regarding the Establishment and Maintenance of the Information System of Restricted Territories and the Classifier of Restrictions of the Restricted Territories and Immovable Property Object";
- Amendments to Cabinet of Ministers Regulation No. 712 of 26 October 2021 "Regulations Regarding Separate Collection of Waste, Preparation of Waste for Re-use, Recycling of Waste, and Material Recovery".
- Amendments to Cabinet of Ministers Regulation No. 834 of 23 December 2014 "Requirements Regarding the Protection of Water, Soil and Air from Pollution Caused by Agricultural Activity";
- Amendments to Cabinet of Ministers Regulation No. 156 of 25 March 2014 "Procedures for the Market Surveillance of Construction Products";
- Amendments to Cabinet of Ministers Regulation of No. 752 of 3 September 2013 "Price List of Paid Services of the State Limited Liability Company "Latvian Environment, Geology and Meteorology Centre";



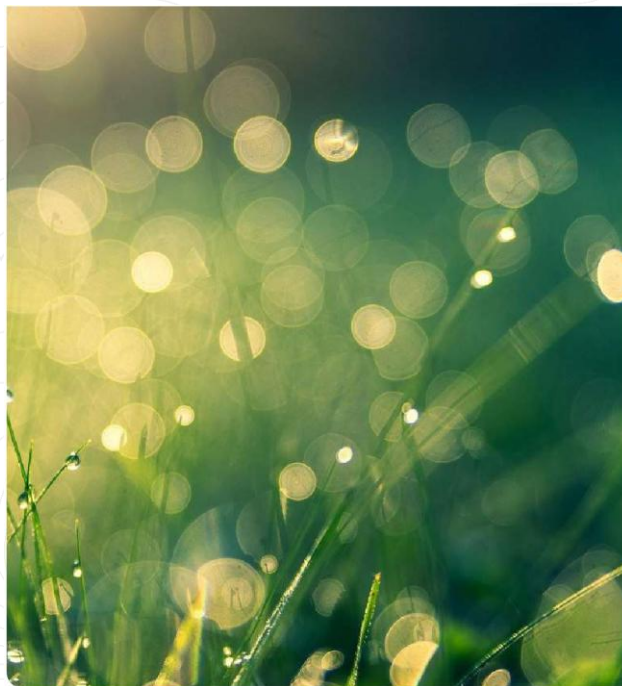


ENVIRONMENTAL IMPACT

/68

- Amendments to Cabinet of Ministers Regulation No. 570 of 21 August 2012 "Mining Procedures";
- Amendments to Cabinet of Ministers Regulation No. 657 of 15 August 2006 "Procedures for the Provision of Meteorological Information Required for Aircraft Flights";
- Cabinet of Ministers Regulation No. 736 of 23 December 2003 "Regulation Regarding a Permit for the Use of Water Resources";
- Instructions on acts to be taken by the responsible authorities in case of finding a substance or object of unknown origin, suspected explosive, radioactive, dangerous chemical or biological substances, and detecting signs of a terrorist act.

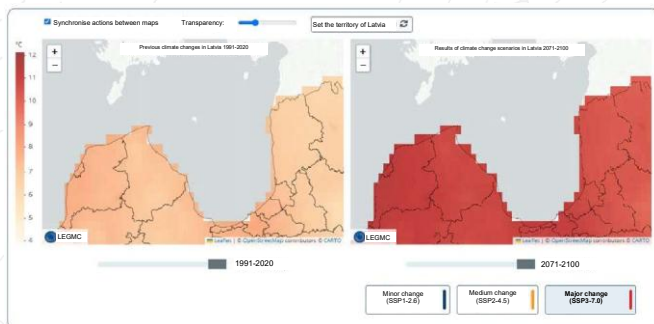
In general, public administration institutions, including ministries of various sectors, form one of the growing segments of the LEGMC's direct customers, as the environmental information provided to the public administration helps making more detailed decisions based on facts and data. At the same time, according to the LEGMC, the use of data summarised and analysed by the capital company in public policy planning could be even broader and is being worked on jointly with ministries and other administrative bodies (e.g., with regard of climate change adaptation measures, as the impact of climate change on various sectors is inevitable).





Climate change projections

In 2023, the LEGMC recalculated climate change projections (carried out every five years in accordance with the Intergovernmental Panel on Climate Change (IPCC) requirements), including new indicators such as coastal erosion projections. Climate indices were calculated for the period of up to 2100, modelling the climate in Latvia's municipalities in case of minor, medium and major climate change, and the [Climate Change Analysis Tool](#) was revised. The revised climate change analysis tool provides every user with information on the current and future projected climate change in Latvia, as well as in each Latvian municipality and state city, and on specific climate change indicators, both by year and by seasons. These indicators can be used for further policy planning and for determination of the necessary measures at national policy level. They can be used, for example, to draft amendments to building regulations, regulatory requirements for the agricultural sector, development planning for the energy sector, development planning for public infrastructure, etc.



The LEGMC has also released a new tool - the Satellite Climate Atlas. It uses EUMETSAT data on the Baltic States by months and years, and also provides climatic norms, long-term values and deviations from the climatic norm. The new tool is available [here](#).

In addition, the State Environmental Service (SES) is an important daily cooperation partner of the LEGMC, with which the LEGMC cooperates both on sectoral issues, such as radiation safety, water management, waste management, GHG emission measurements, etc., and in the preparation of subterranean depths information, for example, for the issue of subterranean depth utilisation licenses.





Support for state and municipal development planning and civil protection planning and implementation

Environmental data summarised by the LEGMC is an important support tool for state and municipal development planning, especially in the field of spatial planning and environmental protection measures to be implemented.

Flood risk and flood hazard maps developed by the capital company, information summarised on subterranean depth resources and observation data while implementing the environmental monitoring programmes (Air and Climate. Water and Land) and other information managed by the LEGMC allows for more efficient spatial planning and definition of development directions, identifying areas with higher risks. This enables local governments to define more effectively which areas are unsuitable for living or active commercial activities, or to take appropriate measures for their development (e.g., land reclamation, building of dams, etc.).

The LEGMC cooperates with Latvian municipalities and planning regions in the following areas:

Climate change and sustainable development, including support for the development and implementation of strategies for climate change adaptation activities, as well as promotion of Sustainable Development Initiatives and the preparation of territorial development plans;

- 💧 **Crisis management planning and preparation for emergency situations**, such as natural disasters or civil protection events;
- 💧 **Exchange of information and data**, including up-to-date meteorological information and data on damage caused by natural disasters, which can be useful within the context of various projects and planning processes;
- 💧 **Implementing joint projects and initiatives** in relation to climate change adaptation, risk prevention and other issues relevant to the priorities of both municipalities and the LEGMC;
- 💧 **Public involvement and information** improving public awareness and involvement in dealing with climate change and extreme weather situations, thereby indirectly contributing to public well-being and responsible behaviour.

Also, the hydrological (high water, flood, wind flood, drought), meteorological (precipitation intensity, air temperature, wind strength and changes of other meteorological parameters both for the next hours, days and even seasons), climatological (e.g., frost and heat waves, changes in their recurrence frequency, past changes and projected future trends, as well as analysis of other parameters), as well as





ENVIRONMENTAL IMPACT

171

seismological information summarised and analysed by the LEGMC, and experience in radioactive and hazardous waste management allow state and municipal authorities to develop effective civil protection plans and measures for timely disaster prevention. In 2024, modernisation of the infrastructure within the framework of the ERDF project was commenced: the network of meteorological and hydrological stations was modernised by installing new equipment in Mārupe and Kuldīga, improving the data quality and the speed of data processing and publication.

Within the context of civil defence and public safety, some of the most important cooperation partners of the LEGMC are the State Fire and Rescue Service (SFRS), the Latvian National Armed Forces (NAF) and the SJSC (VAS) "Latvijas Gaisa satiksme".

Cooperation with the SFRS and other services allows for improved overall efficiency and response capacity in situations related to weather impacts and natural disasters. This is particularly important in emergency cases such as flood, storms, forest fires and other conditions. The cooperation is ensured within the framework of the Civil Defence Plan and the LEGMC-SFRS cooperation agreement and includes:

- 💧 **Information exchange:** The LEGMC provides the SFRS and other services involved in emergency management with up-to-date and accurate meteorological information on upcoming weather conditions and potential natural hazards, organises regular briefings on the hydrometeorological situation, as well as engage in civil defence training of national or international importance as required. It helps the SFRS prepare for and respond to emergency events, such as flood or storms, to minimise their impact;

- 💧 **Research and development projects:** Cooperation also includes joint research and development projects using both meteorological and fire and rescue data and technologies to improve the efficiency of crisis response processes and preparedness for future emergencies;

- 💧 **Coordinated public information:** The services work together to provide the public with clear, understandable and coordinated information on the threats and risks associated with extreme weather conditions and natural disasters, as well as on what to do in such situations.

Cooperation with the NAF helps promote security and preparedness for emergencies, especially in relation to natural disasters and chemical, biological, radiological and nuclide (CBRN) risk situations. The availability of information prepared by the LEGMC contributes to the response capacity of the NAF in such situations and contributes to public safety. In cooperation with the NAF, both continuous exchange of information on actual and expected hydrometeorological conditions and potential natural hazards are provided, and joint trainings and educational programmes are organised to improve the knowledge and competences of the NAF specialists in the areas related to environmental conditions.

In 2023, the LEGMC implemented and, in 2024, it further expanded an impact-oriented warning system, enabling, inter alia, planning of short-term civil defence measures.





ENVIRONMENTAL IMPACT

172

Besides, taking into account current events in Latvia (e.g., increased flood risk in the Jēkabpils vicinity in winter 2023, as well as flood caused by heavy precipitation in the summer season, which caused, inter alia, flood also in river basins), the issue of flood risk forecasting and the development of appropriate action algorithms at all levels involved has become particularly topical. In accordance with the LEGMC Flood Risk Information System and its forecasts, the most significant flood-prone areas in Latvia are the Daugava basin from Jēkabpils to Daugavpils, the Lielupe basin, the territories of Riga and the Greater Riga, as well as the territories around Lake Lubāna, Lake Liepājas and Lake Engures. The likelihood and seasonality of both flood and the range of water level changes in these areas are expected to increase in the coming years, thus making flood risk management measures very important. In 2024, the LEGMC has commenced work on the **ICEREG** project, within the framework of which development of ice flood risk management measures in specific areas is provided for.





Support for the private sector in identifying, assessing and managing environmental risks

For private sector companies - including both financial and non-financial sectors - it is important to be aware in the planning and development of their operations how they may be affected by both short-term weather fluctuations and long-term climate change. The information summarised and provided by the LEGMC can help in **early identification of weather-related risks and adaptation solutions in the short and long term**.

In order to be able to provide information relevant to various sectors, the LEGMC receives and further processes information on more than 100 hydrometeorological parameters every minute. Remote observation data is also actively used, both radar information and information from lightning discharge sensors, as well as the available data from meteorological satellites. On this basis, the following forecasts are developed:

- 🔹 **8 times a day** - forecast for the next 62 hours;
- 🔹 **2 times a day** - forecast for the next 14 days;
- 🔹 **Once a day** - forecast for the next 6 weeks;
- 🔹 **Once a month** - forecast for the next 13 months
- 🔹 **Once in 4 months** - forecast for the next 24 months
- 🔹 **Once in 5 years** - climate change scenarios to the end of the 21st century (but these scenarios are added by indicators aimed at the areas of national economy also in the meantime).

The LEGMC has almost 50 regular customers, who are provided with tailored information depending on the specifics and needs of the sector. Users include energy companies (a very active segment of customers with specific data needs, in particular the use of renewable sources in electricity generation is most dependent on weather conditions), and the data is also used by media, transport and logistics companies, agricultural companies, etc. In recent years, demand from the financial sector (both insurance companies and commercial banks) has also started to grow, as it has become increasingly important for this sector to assess climate risks of their customers and impact of these risks on property value, insurance policy price and other factors.





ENVIRONMENTAL IMPACT

174

In response to broader use of renewable energy sources in the national economy, a pilot project was implemented in 2024 in cooperation with the JSC (AS) "Sadales tīkls", within the framework of which a forecast model of solar power plant generation and a tool for monitoring and evaluating these forecasts were developed. The tool allows for broadening cooperation with the energy sector.

However, it is not possible to identify full range of customers for the LEGMC, since increasingly volume of weather forecast and warning data are available [as open data](#) from 2023. The datasets available on the Open Data Portal are planned to be progressively supplemented by 2026. Through the use of API solutions, this data can be directly used and integrated into services by a growing range of stakeholders, the number and specifics of which cannot be reliably tracked by the LEGMC.

In order to make observations and forecasts as accurate as possible, the LEGMC has been increasingly using not only local observations, but also satellite navigation data. For example, it is particularly useful for scanning flooded areas and developing relevant future forecasts.

With regard to climate risks, the LEGMC is increasingly focusing attention within the circle of its customers on the importance of thinking not only about reducing their own emissions, but increasingly - about how the companies and sectors will start seeking the adaptation solutions to the inevitable climate change as early as today.

In addition to hydrometeorological and climatic data, the LEGMC also provides laboratory services to its customers. Environmental sampling can be applied for, and analysis of water, soil, sludge, sediment and other environmental samples, as well as air and emission measurements can be performed in the laboratory. You can also test hazardous waste, get individual dosimetry services, perform radioactivity testing, testing and calibration of hydrometeorological, X-ray dosimeters and other X-ray measuring devices.

In 2024, the laboratory of the LEGMC has carried out environmental sample testing for 4,063 orders, performing more than 91,300 analyses in total together with monitoring samples. In addition, 850 hydrobiological analyses were carried out in cooperation with the Inland Waters Unit (IWU). In the field of thermoluminescence dosimetry (TLD) testing, the laboratory processed 2,015 orders performing 7,900 dosimeter measurements. In the metrological services segment, 208 commercial orders and 130 internal orders of the LEGMC were serviced, issuing 1343 metrological certificates in total. In the field of secondary standard dosimetry, 112 orders were implemented with issued 277 certificates. In the area of ambient air quality, average values of 537,985 hours were published in 2024, providing an average data coverage of 94.2%.



IMPACT ON SOCIETY

8





IMPACT ON SOCIETY

176

Impact of the LEGMC on society can be viewed from two perspectives - that of existing and potential employees, and that of a general public. The LEGMC has a segmented field of activity, therefore, attracting and retaining appropriately skilled staff in the long term is critical for the acquisition and processing of quality environmental data. As for the general public, involvement of the LEGMC in the development of the environmental research sector and, in particular, in the promotion of the quality of life of society by providing easily accessible and usable data that helps make informed decisions, change habits and reduce the negative impact caused by people on the environment is important.

EMPLOYEES

In 2024, the LEGMC employed **259 employees**, including:

- 150 women and 109 men;
- 249 employees on permanent contracts and 10 on fixed-term contracts;
- 229 full-time and 30 part-time employees;
- 50 new staff members joined (27 women and 23 men);
- Staff turnover rate - 15.4%.

In 2024, the average remuneration at the LEGMC, excluding the remuneration of the Management Board, was **EUR 1,685.44** (gross).





Social protection

The LEGMC has approved a revised remuneration policy, which provides for that the basic salary for employees is set within the salary range of the position according to the employee's qualifications, complexity of duties, level of liability, individual performance and competencies. According to the situation, the LEGMC shall disburse the statutory allowances for replacement of another employee, overtime work, work on public holidays, etc.

The LEGMC does not have a collective agreement with a trade union, but, in addition to the provisions of external laws, the LEGMC provides the following to its employees:

- ◆ Additional leave for length of service (depending on the number of years worked);
- ◆ Health insurance (available to all employees after the end of their probationary period);
- ◆ Reimbursement of the costs of purchase of optical corrective appliances (if required by the doctor's report in the compulsory health check-up card);
- ◆ Allowance in case of death of a relative;
- ◆ Childbirth allowance;
- ◆ Allowance for a relative of the employee in the event of the employee's death.

Exercising the rights and opportunities provided for in the laws and regulations, in 2024, **14** employees of the LEGMC were on parental leave (7 employees - 4 women and 3 men - took parental leave right in 2024).





Staff development and talent attraction

Provision of services of the competence centre for the environmental data requires an increasing range of competences and data analytical skills, and it is essential for the LEGMC to invest in both the development of the existing staff and the attraction of new talents.

An increasing part of the work of the LEGMC is based on numerical modelling rather than physical observations, and there is a rapidly growing demand for data analysts who are able to process large data sets and synthesise useful information from them. Effective communication skills to identify the individual needs of each customer and the capacity of the LEGMC to provide them, as well as the ability not only to analyse data by themselves, but also to use artificial intelligence and other modern solutions are considered increasingly important skills of employees. Interdisciplinary work is also increasingly important - the LEGMC needs to be able not only to provide accurate forecasts, but also, for example, to assess their impact on electricity capacity provision and other relevant aspects of economic impact. Therefore, part of the specialists of the LEGMC are profiling, for example, becoming experts in hydrometeorological and climatic forecasts in the energy sector.

In 2024, the LEGMC continued to actively promote staff growth and improvement of skills by organising training in various fields. Overall, training was provided for **152 employees** or **59%** of the total number of employees. All the employees acquired fundamentals in fire safety, while relevant specialists received training on requirements of the General Data Protection Regulation (GDPR), quality management, internal audit and management system issues related to the provision of air navigation services. Furthermore, training was provided also in areas such as labour law, the procurement process, prevention of the conflict of interest, ethics of public officials, IT security, labour protection, accounting and document management. In addition, employees learned specific skills such as those of chainsaw and hedge trimmer operator, first aid, work at height, fire safety and electrical safety.

In 2024, staff of the LEGMC also participated in international training, such as experience exchange visits to the Finnish Environment Institute (SYKE), EUMETSAT and ESSL Testbed courses, as well as international seminars in the areas of nuclear forensics, radioactively contaminated land and meteorological forecasts. The total number of lessons is currently not counted.

Whereas, in the effort to improve the culture of innovation in the company, in 2024, the LEGMC examined and supported a total of 18 proposals from LEGMC employees related to the implementation of new information systems or changes to the existing systems - both in terms of their functionality and technical support.





IMPACT ON SOCIETY

179

In order to promote both staff growth and working skills applying new methods, as well as to facilitate more efficient data entry, processing and publication, work on the introduction of two process innovations has been commenced in 2024 and is ongoing in 2025. Implementation of the Monitoring Data Input and Analysis System (MDIAS) will help improve the operativeness of environmental monitoring data input by providing the possibility to input environmental data observations online throughout the territory of Latvia, performing a data quality check before storing the data in the information systems of the LEGMC. This tool will provide a modern way to make observations operatively, reducing the human resources and time involved in the creation of the products of the LEGMC.

Whereas, implementation of the Data Warehouse Business Analysis Tool will enable improvement of data processing, analysis and visualisation, as well as development of data science and data analysis competence and capacity among the LEGMC staff. Implementation of this solution is accompanied by training of the LEGMC staff in the development of analysis tools for specific work tasks.

20 young people (including 8 current employees) took advantage of the internship opportunities at the LEGMC in 2024. One intern started employment relations with the LEGMC during their internship, and three other former interns joined the LEGMC team a little later.





IMPACT ON SOCIETY

/80

CUSTOMERS

Service availability, quality and data reliability

The availability, quality and reliability of information are important for the use and further impact of the services provided by the LEGMC. In order to ensure quality, improvement-oriented and stable customer service, the LEGMC has approved a Customer Service Standard. The Standard defines the basic principles for the LEGMC employees in their communication with external and internal customers, cooperation partners, orientation towards long-term relations with customers and dedication in the customers' needs.

In 2024, the Customer Service Standard was updated by specifying the opening hours of the customer service before public holidays, legal address and e-address of the LEGMC, link to the services section of the latvija.lv portal, as well as the description link of the information pay phone 90006611.

In 2024, average customer satisfaction rate was **88,7%**. Customers highly appreciated the professionalism, competence, operativeness, accuracy, responsiveness, communication skills, positive attitude of the LEGMC specialists, as well as highlighted the quality service provision, efficient and professional cooperation, continuing cooperation also in the field of information exchange and training.

Customers have the possibility to submit complaints about the services received, if deficiencies are found. In 2024, almost three quarters or 72.4% of complaints were related to technical matters, including website server access problems and other similar issues.





IMPACT ON SOCIETY

/81

Particular attention is paid to complaints about poor quality service - in such cases, an assessment is made of the reasons for the non-compliance and the possibilities to remedy them or improve the service delivery process.

For example, in 2024, a customer complaint about incomplete generation of average daily temperature and solar radiation forecasts for the next 14 days for Riga resulted in changes to the monitoring of data flows and information production to provide immediate detection of problems and preventive warning of the producer of information.

Whereas, doubled reduction in the number of complaints since 2022 can be explained by replacement of the existing LEGMC website with a modern environmental data and systems portal, in the implementation and testing of which customers were also actively involved from the very beginning.

In order to ensure that the quality of services of the LEGMC remains consistently high regardless of the suppliers involved (e.g., suppliers of equipment, technology, information technology solutions, etc.), in 2023, the Management Board of the LEGMC approved the External Supplier Performance Assessment Rules, which are applied to the entire operation of the LEGMC. According to these rules, **296 suppliers** were evaluated in 2024, and all the suppliers were rated "Safe" or "Reliable".





IMPACT ON SOCIETY

/82

SOCIETY

Contribution to improvement of the society's life quality

In 2024, the LEGMC continued development of services of public interest, improving access to information and strengthening the state's capacity to respond to environmental risks. In 2024, development of the mobile app [Meteo.lv](#) was completed. The app allows residents to easily keep track of weather conditions and receive personalised warnings about dangerous meteorological and hydrological phenomena. The app uses an impact-oriented alert system that classifies the level of threat according to a colour principle (yellow, orange, red), also taking into account the day of the week, time of the day, daily habits of the society and public events.

Regular work on the GHG emissions inventory is also ongoing, and data integration into the state and European data repositories such as ReportNet is performed. Furthermore, [a database of fluorinated gases](#) was developed, and the quality control system for GHG emissions reporting was improved. These improvements facilitate transparent and accurate information exchange between the LEGMC, the State Environmental Service and the European Commission.

In the field of water quality, the LEGMC implemented several activities within the framework of the LIFE project - [artificial wetland in the Lake Saukas basin was created, two culverts were rebuilt](#) and [construction of a fishpass in Ropaži dam](#) is planned. Additionally, [an initial flood risk assessment](#) was performed, [flood hazard maps](#) were updated, and [the development of economic scenarios for water quality planning](#) was launched. These measures contribute not only to environmental quality, but also to public safety within the context of climate change.

Also, [in the areas of subterranean depth management](#), digitisation of data and improvement of accessibility of public information was continued, including by supplementing [the Subterranean Depth Information System \(SD IS\)](#) with new geospatial layers and information on mineral resources.

All these activities demonstrate the contribution of the LEGMC to improving the quality of life of society, at the same time strengthening also science-based decision-making in public administration, local governments and business.





ECONOMIC IMPACT

9





ECONOMIC IMPACT

/84

The primary role of the LEGMC is to develop the competence centre for environmental data and to ensure the availability of its services, as well as to perform the functions delegated by the state. However, financial stability of the capital company, contribution to the development of services and customer relations, as well as efficient, open and ethical management are also essential. From an economic viewpoint, the LEGMC has an indirect rather than a direct impact on the national economy, as the above-mentioned environmental and social aspects of operation of the capital company further enable the users of its services to make informed and well-considered decisions.

Financial stability

In order to ensure its ability to successfully ensure performance of both the functions delegated by the state and to provide the commercial services required by the private sector, financial stability of the capital company is essential. The aim of the LEGMC as a public person's capital company is not to generate maximum profit, but to ensure predictable operations, covering expenses to the extent possible and developing a commercial services segment that generates additional revenue.

In 2024, turnover of the LEGMC amounted to **10,46 mln euro** consisting of:

Public funding and projects:

- State budget subsidy for delegated functions: **5.90 million euro**;
- Revenue from project implementation: **1.26 million euro**.

Commercial and specialised services:

- Hazardous waste collection, transportation, disposal: 0.49 million euro;
- Meteorological forecasts: 1.28 million euro;
- Laboratory services: 0.58 million euro;
- Preparation of hydrometeorological, environmental and geological information: 0.34 million euro;
- Chemical management services: 0.23 million euro.





ECONOMIC IMPACT

/85

Rental income and registers:

- ◆ Space rental: 0.08 million euro;
- ◆ Observation station service: 0.01 million euro;
- ◆ Greenhouse gas emission unit registry: 0.01 million euro.

Other revenue:

- ◆ Other services (EU fund projects, etc.) 0.26 million euro.

The year of 2024 was closed with losses of 0.0197 million euro, significantly less than in 2023, thus, the capital company has managed to continue improving its financial situation.

Total expenditure on staff remuneration in 2024 amounted to 5.73 million euro, and these expenses account for the majority of the costs of the capital company, given that the experts of the LEGMC perform highly intellectual work and specific data analysis.

Whereas, the contributions to the state budget in 2024 amount to 3.37 million EUR, the largest share of which is accounted for by mandatory state social insurance contributions (1.81 million EUR), followed by personal income tax (0.93 million EUR), value added tax (0.51 million EUR), natural resources tax (0.11 million EUR), corporate income tax, state duty of the business risk and other payments (totalling around 0.01 million EUR).





ECONOMIC IMPACT

/86

Service development

In 2024, the LEGMC provided commercial services under 2,602 contracts, including exports to 21 European countries.

Information on the services is available on the LEGMC website and Latvija.lv. Customer consultations are provided in person (in Riga and Salaspils), by phone, e-mail, as well as by 24-hour phone 90006611. Operational hydrological and meteorological information is also provided on social networks - Facebook, Instagram and X.

In 2024, the following services were provided:

- 💧 2,010 statements
- 💧 7,504 testing reports and certificates
- 💧 8,947 customer consultations

The LEGMC also provides export services to foreign authorities and companies. Public databases (subterranean depths, waste, etc.) are improved and access to data for users is enhanced. More and more data is posted into the Open Data Portal, making it freely usable.

In order to increase revenue, the LEGMC participated in procurements where it has competence - in 2024, it participated in 69 procurements, 50.7% of which resulted in concluded contracts.

Customer satisfaction analysis is carried out to improve services (see page 80 for details).

Furthermore, new solutions are tested in cooperation with customers to develop the most appropriate service models.





LIST OF INDICATORS

187

GRI indicator score in the general section of the report¹

| GRI indicator | Name of indicator | Report page where the information specified in the indicator is published | Comments |
|---------------|---|---|--|
| 2-1 | Basic information on the organisation - legal name, form of ownership, location of headquarters and other places of operation | 9, 11 | |
| 2-2 | Legal entities included in the sustainability report | n/a | The LEGMC has no subsidiaries or other companies with which it forms a part of a group of companies, therefore the report refers to the LEGMC only |
| 2-3 | Reporting period, frequency and contact details | 4 | |
| 2-4 | Reclassification of information, updates | n/a | There is no information in the report that needs to be updated in relation to the previous year |
| 2-5 | External acknowledgement | 4 | |
| 2-6 | Operations, value chain and other business relationships | 11, 17 | |
| 2-7 | Employees | 9, 76-79 | |
| 2-8 | Workers not employed by the company | n/a | |
| 2-9 | Governance structure and composition | 37-39 | |
| 2-10 | Nomination and approval of members of the supreme body | 37 | |
| 2-11 | Head of a higher institution | 38 | |
| 2-12 | Role of the supreme body in managing organisational influence | 38 | |
| 2-13 | Delegation of liability for impact management issues | 42 | |

¹ The GRI universal standard indicators are mainly used in the general title of the report About the LEGMC. Some indicators are also included in the thematic titles of the report





LIST OF INDICATORS

/88

| | | | |
|------|---|------------|---|
| 2-14 | Role of the supreme body in sustainability reporting | 4 | |
| 2-15 | Conflicts of interest | 41 | |
| 2-16 | Communicating important concerns | 80 | |
| 2-17 | Collective knowledge of a supreme body | 38 | |
| 2-18 | Performance assessment of a supreme body | 16 | |
| 2-19 | Remuneration policies | 77 | |
| 2-20 | Remuneration determination process | 77 | |
| 2-22 | Sustainable development strategy statement | 5-7 | Address by the management of the organisation |
| 2-23 | Policy commitments | 40-44 | |
| 2-24 | Implementing policy commitments | 40-44 | |
| 2-25 | Processes for the prevention of negative impacts | 43-44, 81 | |
| 2-26 | Consultation and complaints mechanisms | 80 | |
| 2-27 | Compliance with laws and legal framework | 40 | |
| 2-28 | Membership of associations | 18-21 | |
| 2-29 | Approach to stakeholder involvement | 52-54 | |
| 2-30 | Collective agreements | 77 | |
| 3-1 | Process for determination of key sustainability areas | 56-57, 61 | |
| 3-2 | List of key areas for sustainability | 58-60 | |
| 3-3 | The key areas management approach | 63, 76, 84 | |





LIST OF INDICATORS

/89

Thematic indicator index²

| LEGMC specific indicator | Name of indicator | Report page where the information specified in the indicator is published |
|--|---|---|
| ENVIRONMENTAL IMPACT: Support for national climate and environmental policy planning and implementation | | |
| GRI 302-1 | Energy consumption in organisation | 64-66 |
| LEGMC-V1 | Laws, in the development of which or amendments to which the LEGMC has participated | 67-68 |
| LEGMC-V2 | Actions taken in the reporting year to improve involvement and contribution of the LEGMC to formation of the climate and environment policy | 69 |
| ENVIRONMENTAL IMPACT: Support for state and municipal development planning and civil protection planning and implementation | | |
| LEGMC-V3 | Types/areas of cooperation with municipalities | 70-72 |
| LEGMC-V4 | Types/areas of cooperation with civil and military defence authorities | 70-72 |
| ENVIRONMENTAL IMPACT: Support for the private sector in identifying, assessing and managing environmental risks | | |
| LEGMC-V5 | Availability of forecasts | 69-73 |
| LEGMC-V6 | Types of services | 74 |
| LEGMC-V7 | Customer segments | 73 |
| IMPACT ON SOCIETY: Employees | | |
| GRI 401-1 | Newly recruited employees and staff turnover | 76 |
| GRI 401-2 | Benefits available to staff | 77 |

² The indicators are created by assigning a letter code to each of the areas of sustainability - V (environment), S (social aspect), P (governance) - and numbering them accordingly. In separate cases, where GRI standard indicators are used, the relevant GRI indicator is specified





LIST OF INDICATORS

/90

| | | |
|--------------------------------------|---|------------------|
| GRI 401-3 | Employees who have seized the option to take parental leave | 77 |
| LEGMC-S1 | Staff composition | 78 |
| LEGMC-S2 | Key professions and competences of the LEGMC | 78 |
| GRI 404-2 | Support programmes for staff skill improvement and retraining | 78-79 |
| LEGMC-S3 | Provision of internships | 79 |
| IMPACT ON SOCIETY: Customers | | |
| LEGMC-S4 | Customer satisfaction indicators | 80 |
| LEGMC-S5 | Complaints and action in case of receipt thereof | 81 |
| IMPACT ON SOCIETY: Society | | |
| LEGMC-S6 | Introducing solutions that improve the well-being of society | 82 |
| ECONOMIC IMPACT: Financial stability | | |
| GRI 201-1 | Economic value received and distributed | 84-85 |
| GRI 201-4 | Funding received from the state | 84 |
| ECONOMIC IMPACT: Service development | | |
| GRI 203-1 | Infrastructure investments and services provided | 7, 11-12, 26, 35 |
| LEGMC-E2 | Number of external customers/contracts | 86 |



