

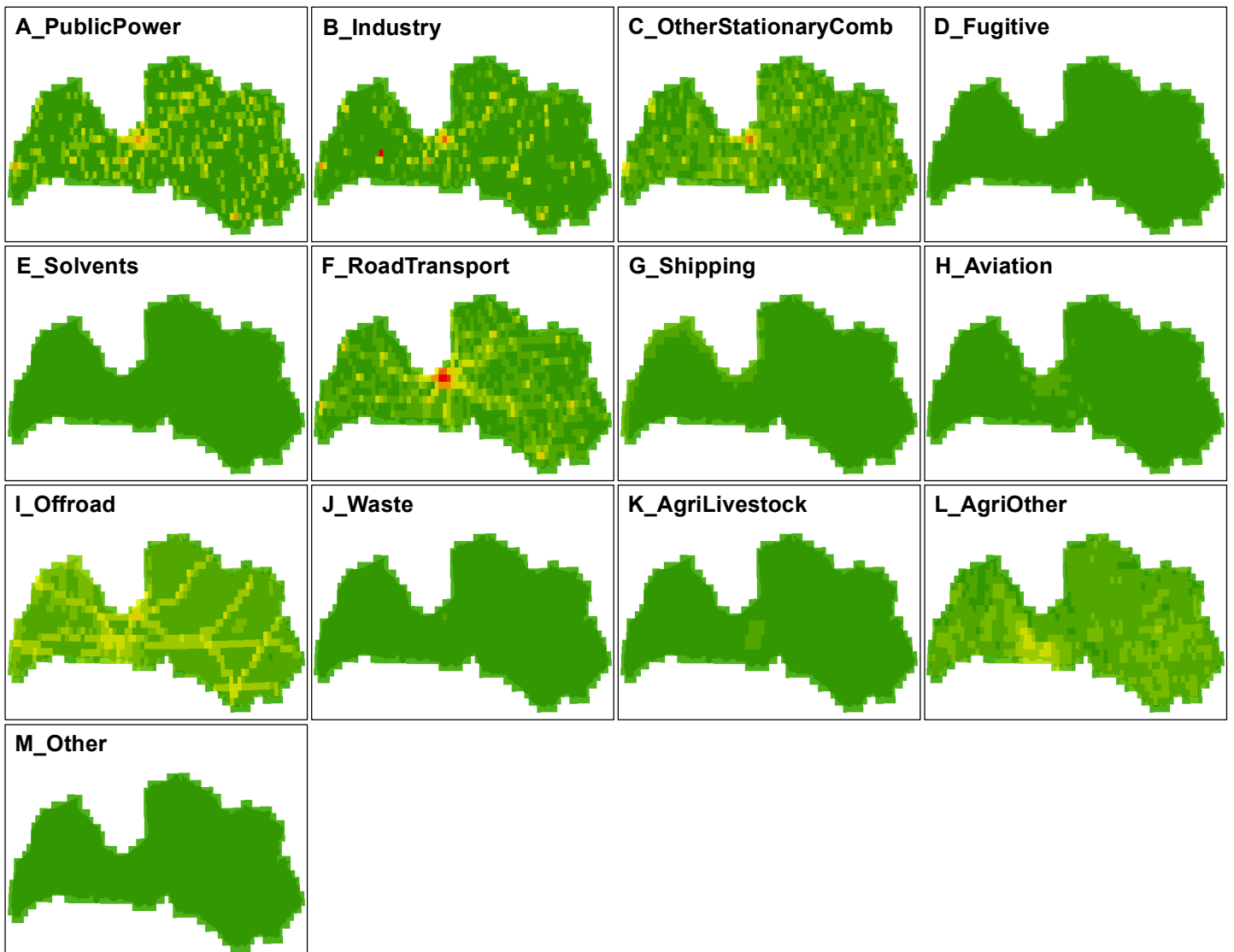
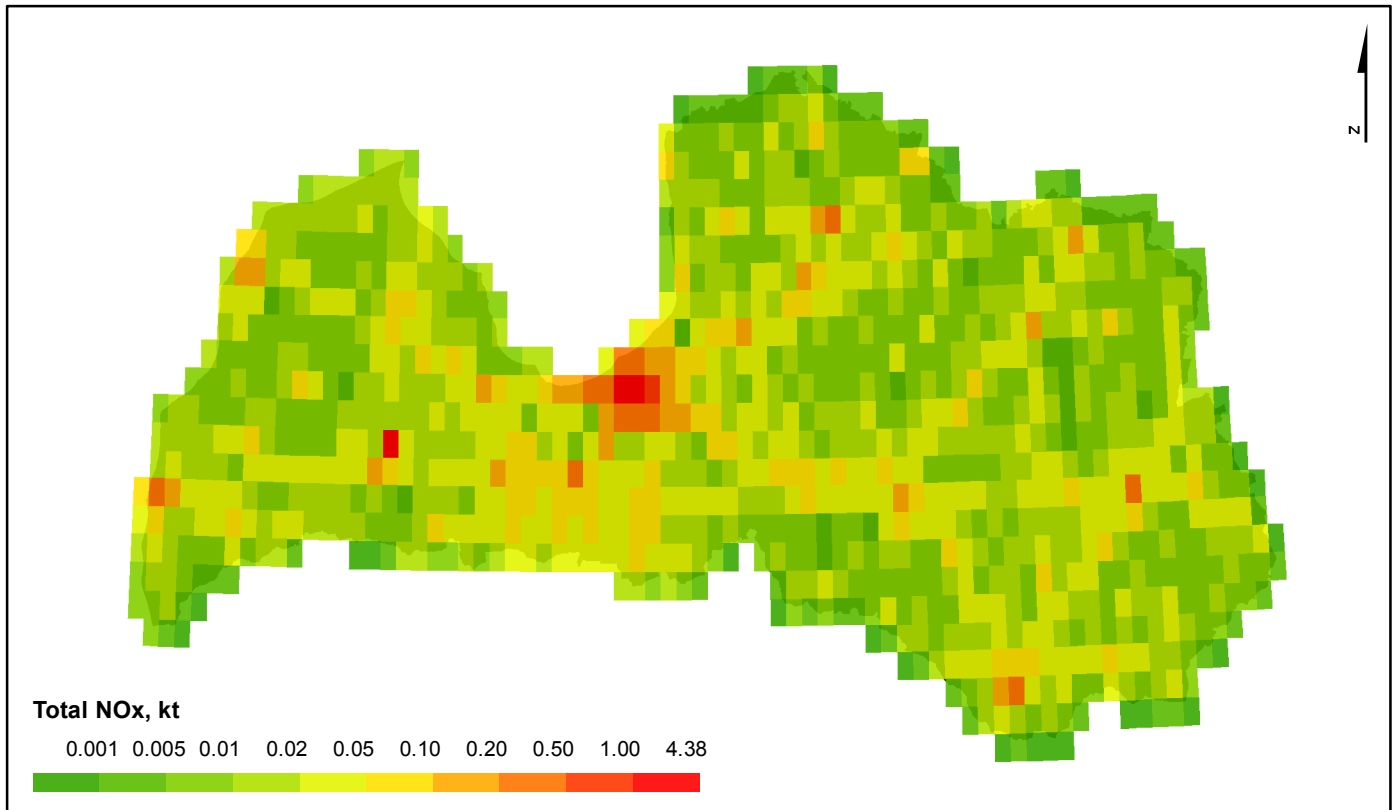
## Submission of Latvian four-yearly gridded emissions data

Latvia has estimated emissions according to EMEP 0.1°×0.1° grid. Emissions were estimated for year 2015.

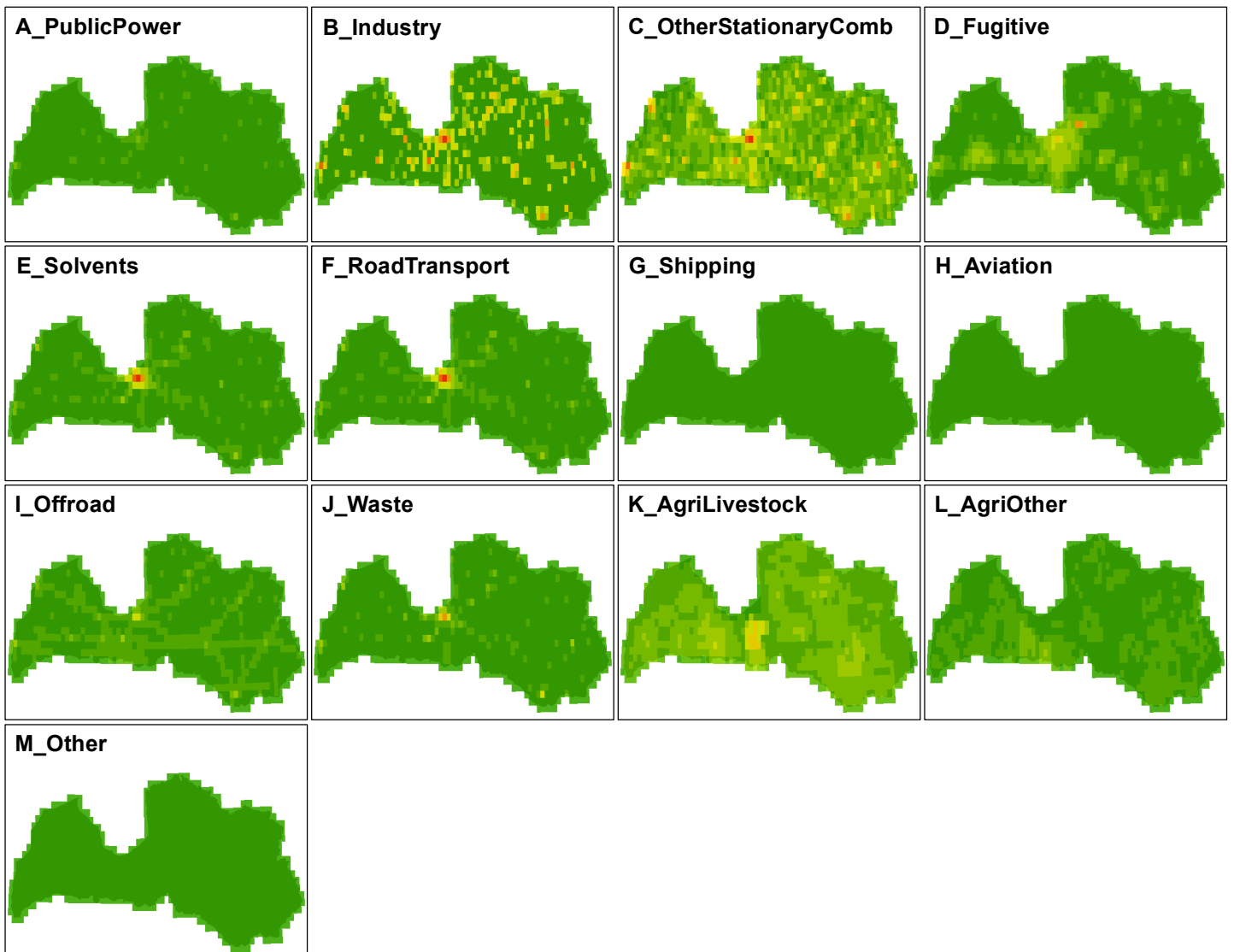
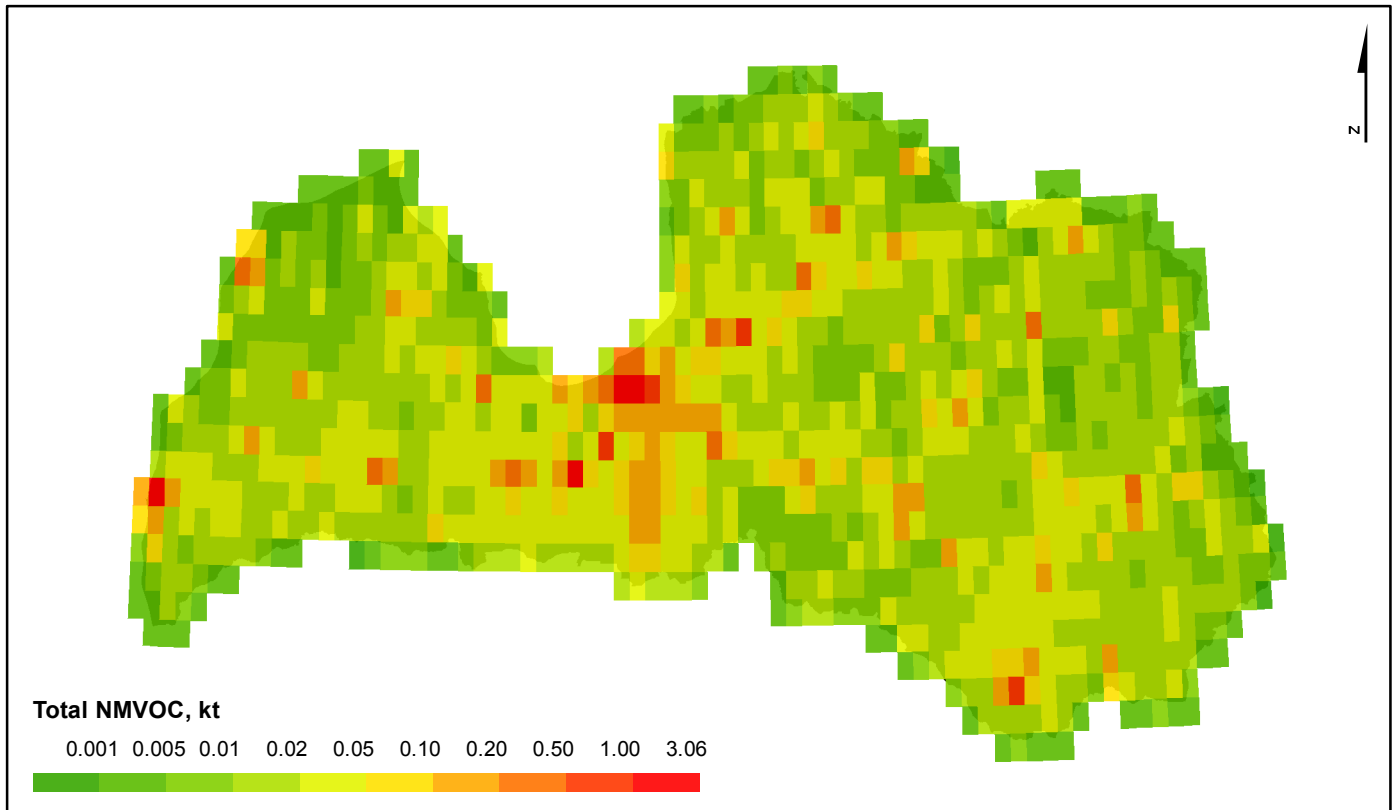
The gridding has been done for 6 sectors divided into 13 GNFR aggregated sectors using different type of data. Emissions reported and data source for gridding the emissions in each GNFR sector are listed in the table below.

GNFR	Pollutants	Data source for gridding
A_PublicPower	NO <sub>x</sub> , NMVOC, SO <sub>2</sub> , PM <sub>2.5</sub> , PM <sub>10</sub> , BC, CO, Pb, Cd, Hg, PCDD/PCDF, PAHs, HCB, PCBs	power and heat suppliers (national database '2-AIR')
B_Industry	NO <sub>x</sub> , NMVOC, SO <sub>2</sub> , NH <sub>3</sub> , PM <sub>2.5</sub> , PM <sub>10</sub> , BC, CO, Pb, Cd, Hg, PCDD/PCDF, PAHs, HCB, PCBs	manufacturing enterprises (national database '2-AIR') EU ETS data statistics on road construction works (SJSC "Latvian State Roads") number of inhabitants (CSB)
C_OtherStationaryComb	NO <sub>x</sub> , NMVOC, SO <sub>2</sub> , NH <sub>3</sub> , PM <sub>2.5</sub> , PM <sub>10</sub> , BC, CO, Pb, Cd, Hg, PCDD/PCDF, PAHs, HCB, PCBs	commercial, institutional, agriculture, forestry related enterprises (national database '2-AIR') number of stoves in country (CSB)
D_Fugitive	NMVOC, PM <sub>2.5</sub> , PM <sub>10</sub>	amounts of coal handling in harbours (CSB) gas stations (national database '2-AIR') gas transmission and distribution network, counties with gas supply, location of gas storage ("Latvijas Gāze")
E_Solvents	NO <sub>x</sub> , NMVOC, SO <sub>2</sub> , NH <sub>3</sub> , PM <sub>2.5</sub> , PM <sub>10</sub> , CO, Pb, Cd, Hg, PCDD/PCDF, PAHs	number of inhabitants (CSB) manufacturing enterprises (national database '2-AIR')
F_RoadTransport	NO <sub>x</sub> , NMVOC, SO <sub>2</sub> , NH <sub>3</sub> , PM <sub>2.5</sub> , PM <sub>10</sub> , BC, CO, Pb, Cd, PCDD/PCDF, PAHs	road network intensity (SJSC "Latvian State Roads")
G_Shipping	NO <sub>x</sub> , NMVOC, SO <sub>2</sub> , NH <sub>3</sub> , PM <sub>2.5</sub> , PM <sub>10</sub> , BC, CO, Cd, PAHs	marine traffic density (marinetraffic.com)
H_Aviation	NO <sub>x</sub> , NMVOC, SO <sub>2</sub> , PM <sub>2.5</sub> , PM <sub>10</sub> , BC, CO, Pb	air traffic routes in Latvia, location of airports and heliports (Civil aviation agency)
I_Offroad	NO <sub>x</sub> , NMVOC, SO <sub>2</sub> , NH <sub>3</sub> , PM <sub>2.5</sub> , PM <sub>10</sub> , BC, CO, Pb, Cd, Hg, PCDD/PCDF, PAHs, HCB, PCBs	manufacturing, commercial, institutional, agriculture, forestry related enterprises (national database '2-AIR') railway network (Envirotech, GIS Latvija 10.2) number of households in country (CSB) area of forests and agricultural lands (Corine Land Cover 2012) marine traffic density (marinetraffic.com)
J_Waste	NO <sub>x</sub> , NMVOC, SO <sub>2</sub> , NH <sub>3</sub> , PM <sub>2.5</sub> , PM <sub>10</sub> , BC, CO, Pb, Cd, Hg, PCDD/PCDF, PAHs, HCB, PCBs	national databases '2-Water', '3-Waste' number of population with no toilets (assumed as waterless toilets) in country (CSB)
K_AgriLivestock	NO <sub>x</sub> , NMVOC, NH <sub>3</sub> , PM <sub>2.5</sub> , PM <sub>10</sub>	number of animals in counties (Agricultural Data Centre)
L_AgriOther	NO <sub>x</sub> , NMVOC, SO <sub>2</sub> , NH <sub>3</sub> , PM <sub>2.5</sub> , PM <sub>10</sub> , CO, PCDD/PCDF, PAHs	areas of various agricultural lands (Corine Land Cover 2012) agriculture related enterprises (national database '2-AIR') statistics of last year's grass burning (State fire and rescue service)
M_Other	NO <sub>x</sub> , PM <sub>2.5</sub> , PM <sub>10</sub> , CO, PCDD/PCDF, PAHs	area of forests (Corine Land Cover 2012)

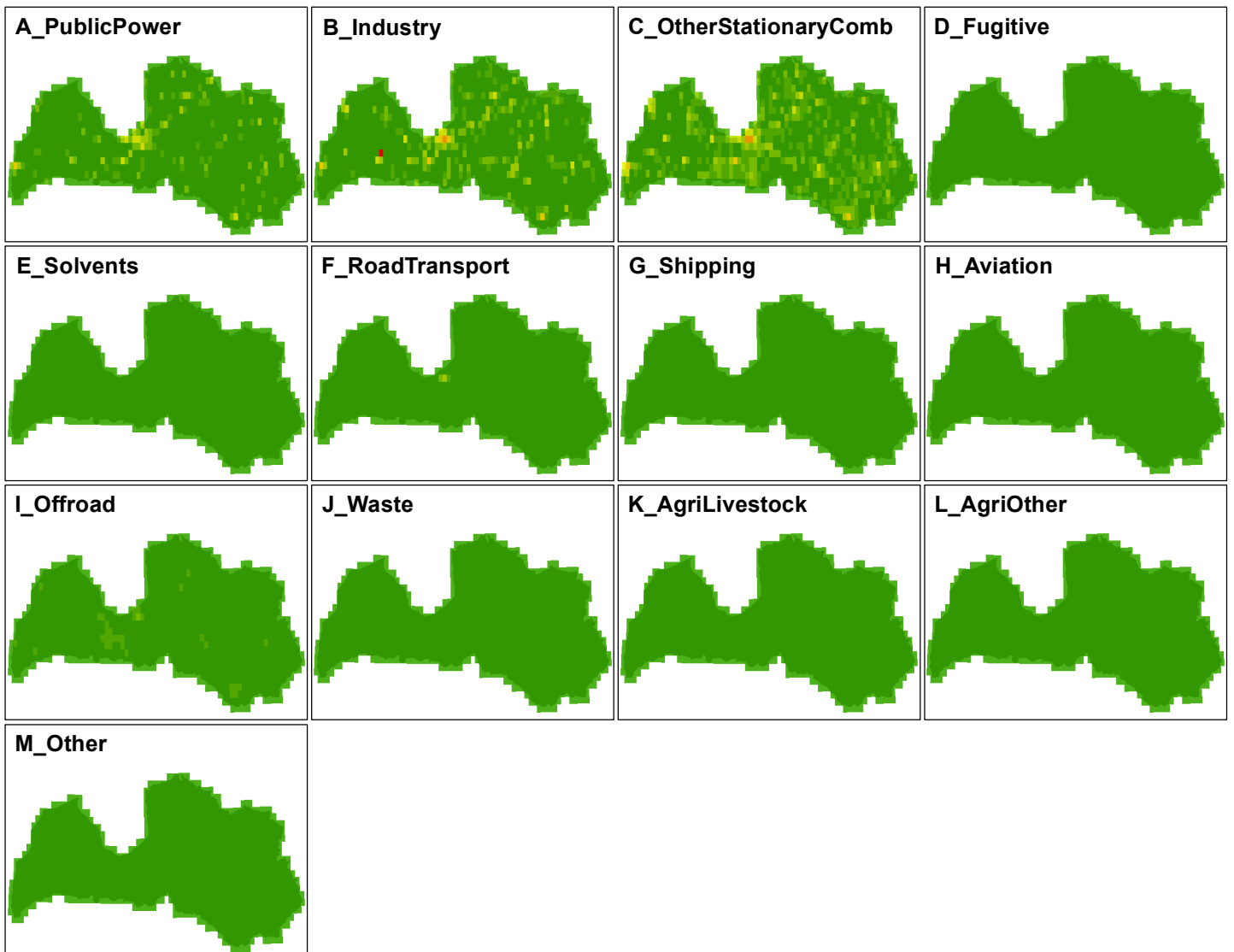
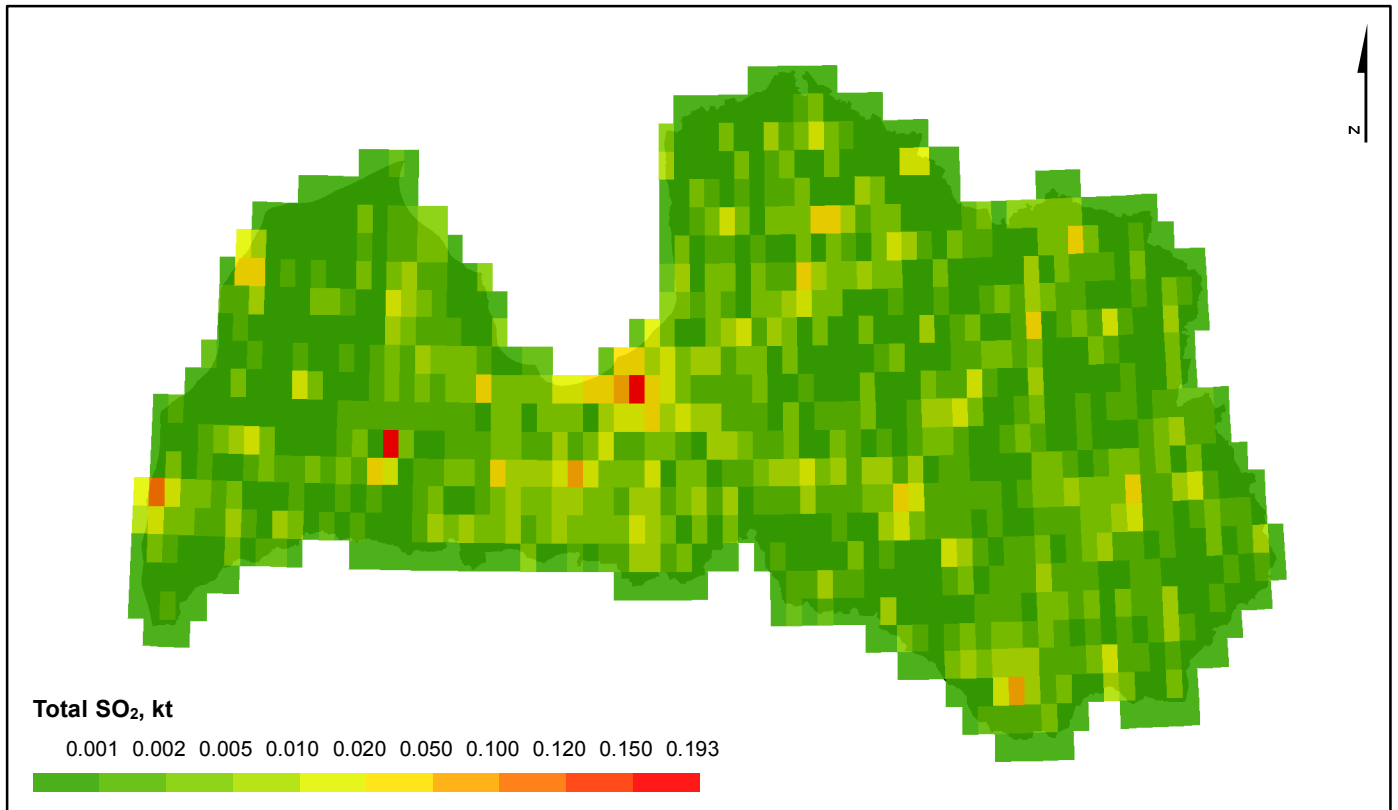
# NO<sub>x</sub> gridded emissions in 2015



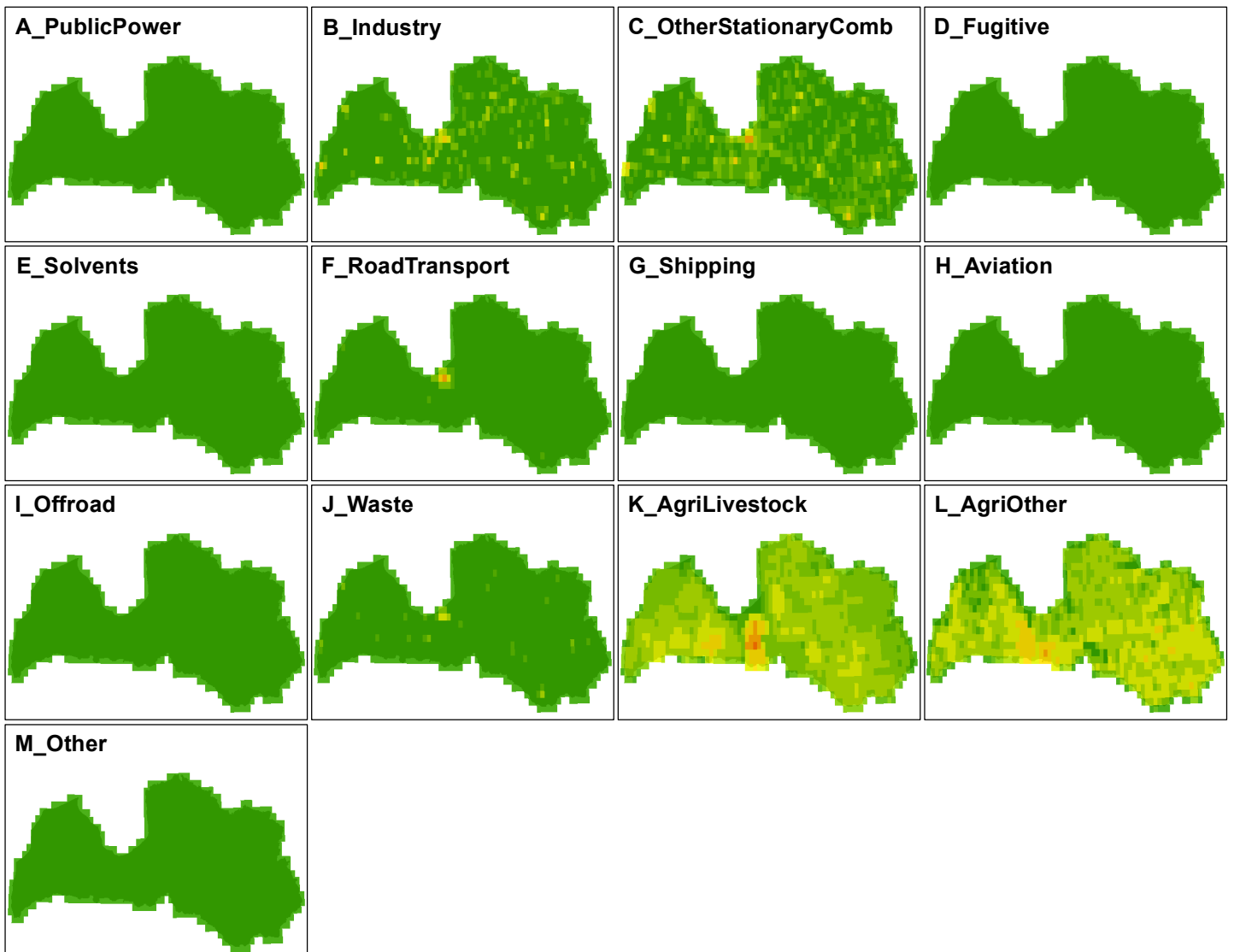
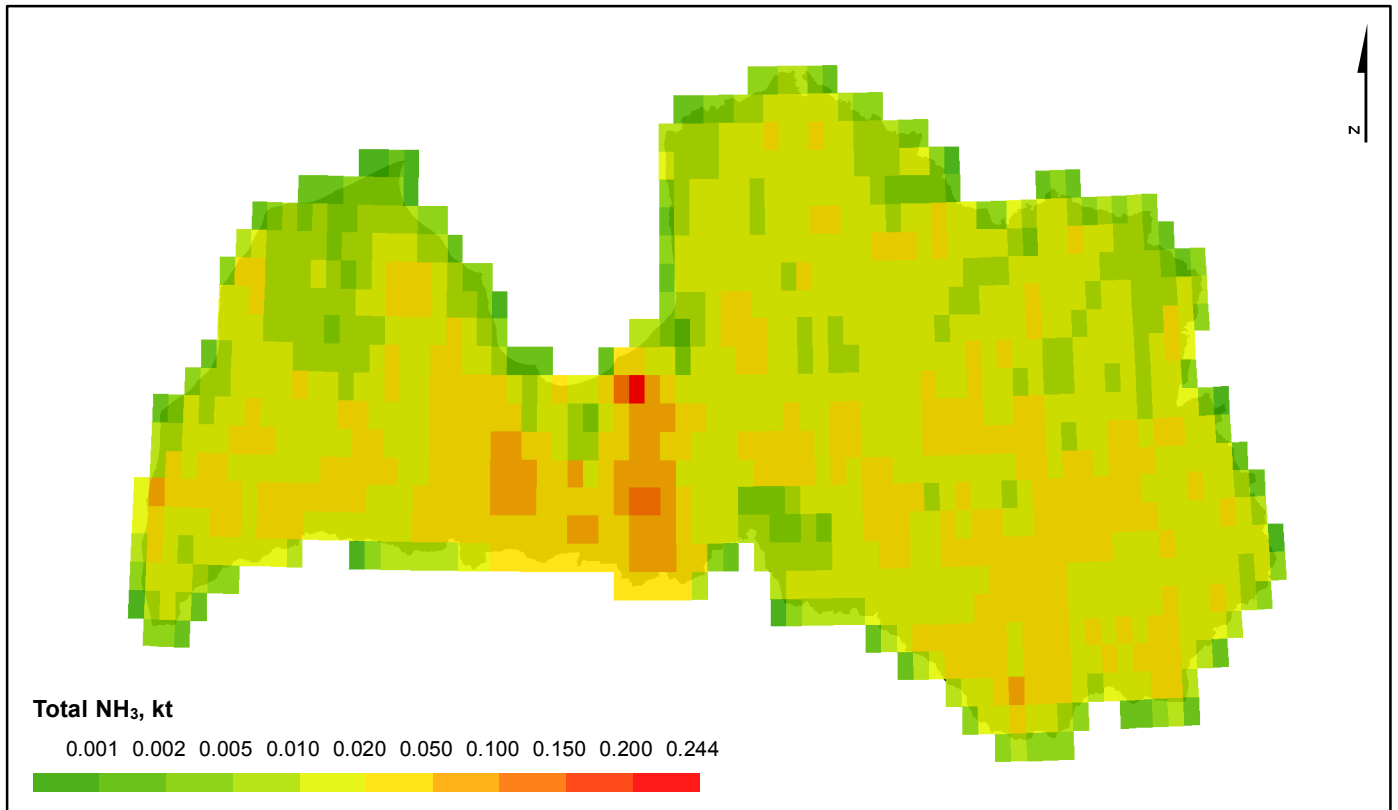
# NMVOC gridded emissions in 2015



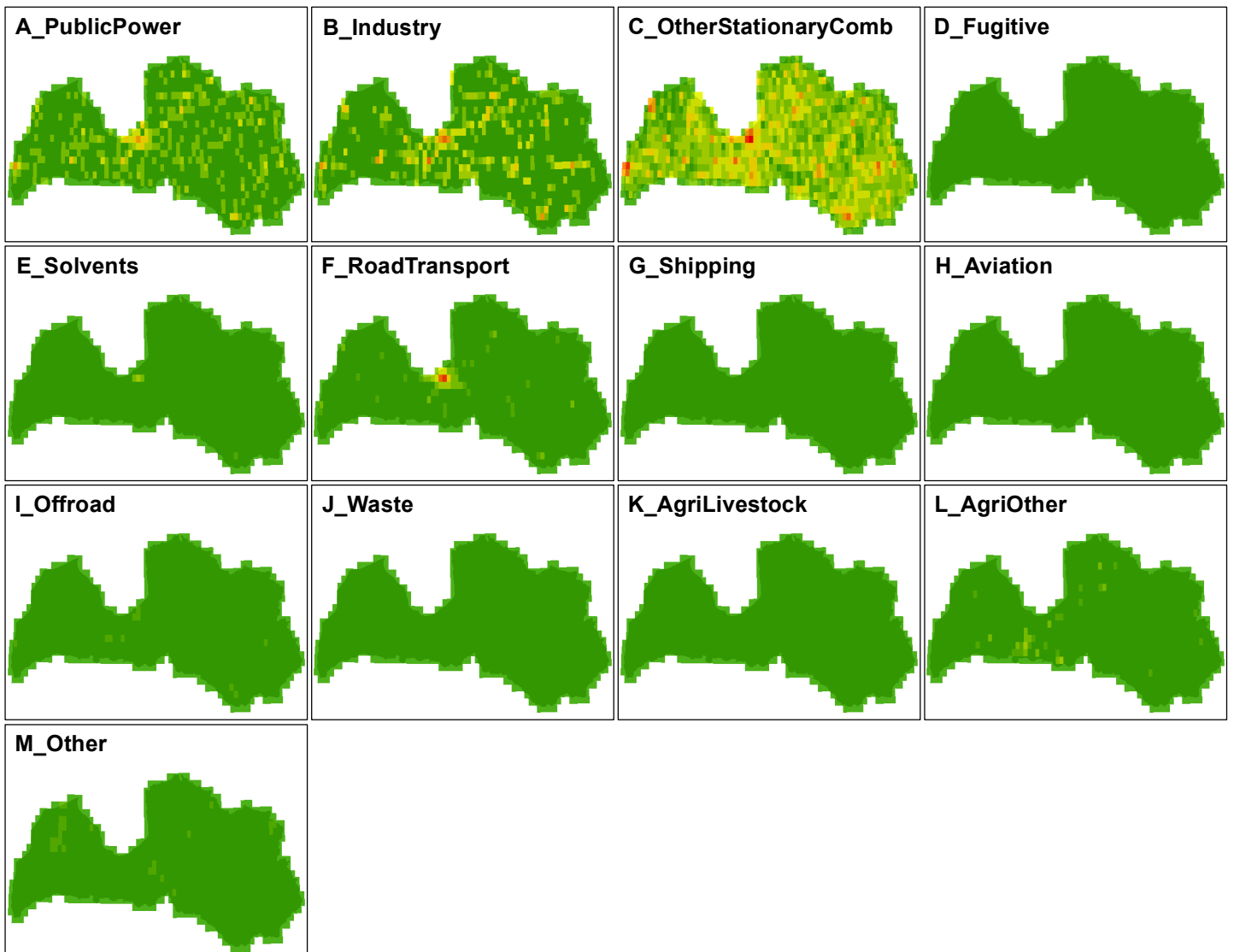
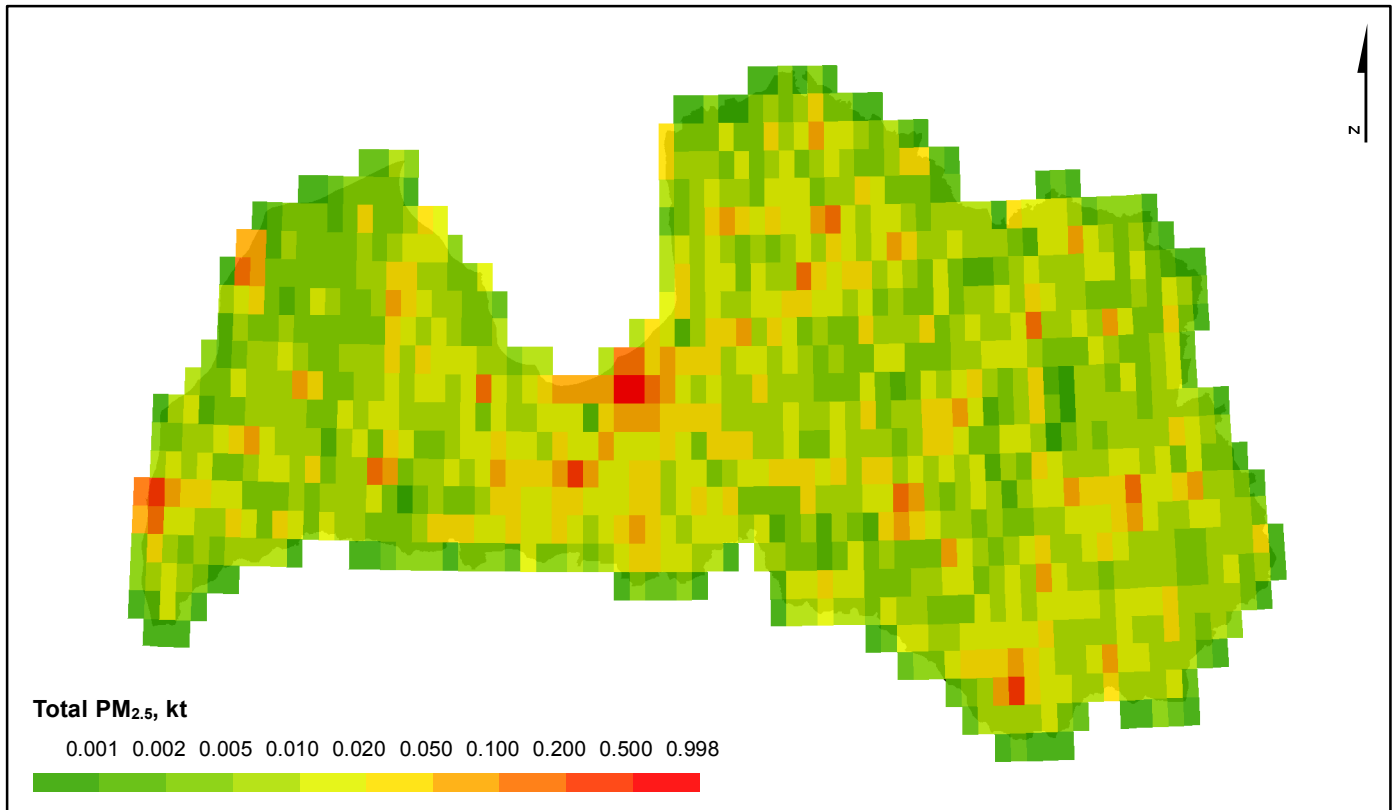
# SO<sub>2</sub> gridded emissions in 2015



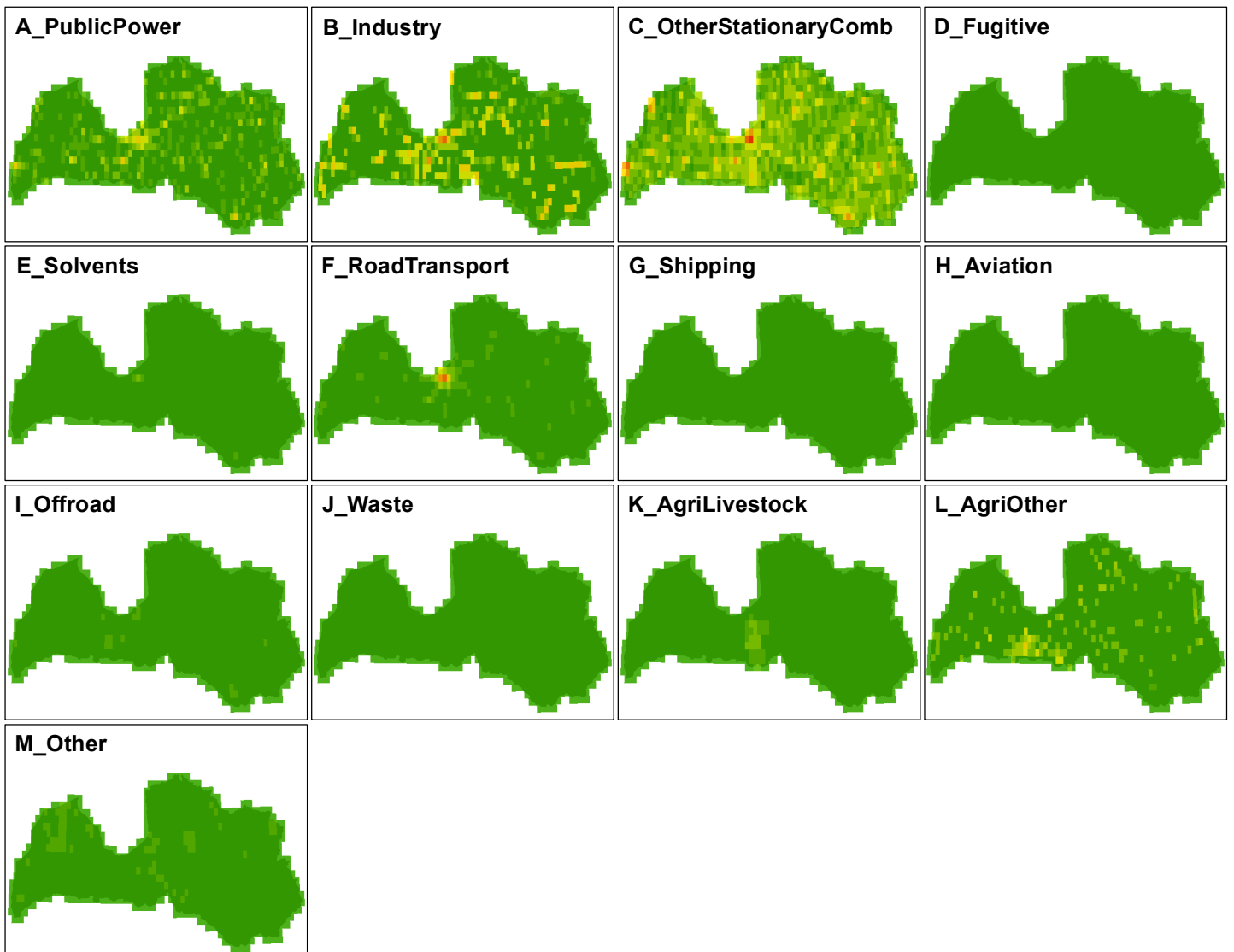
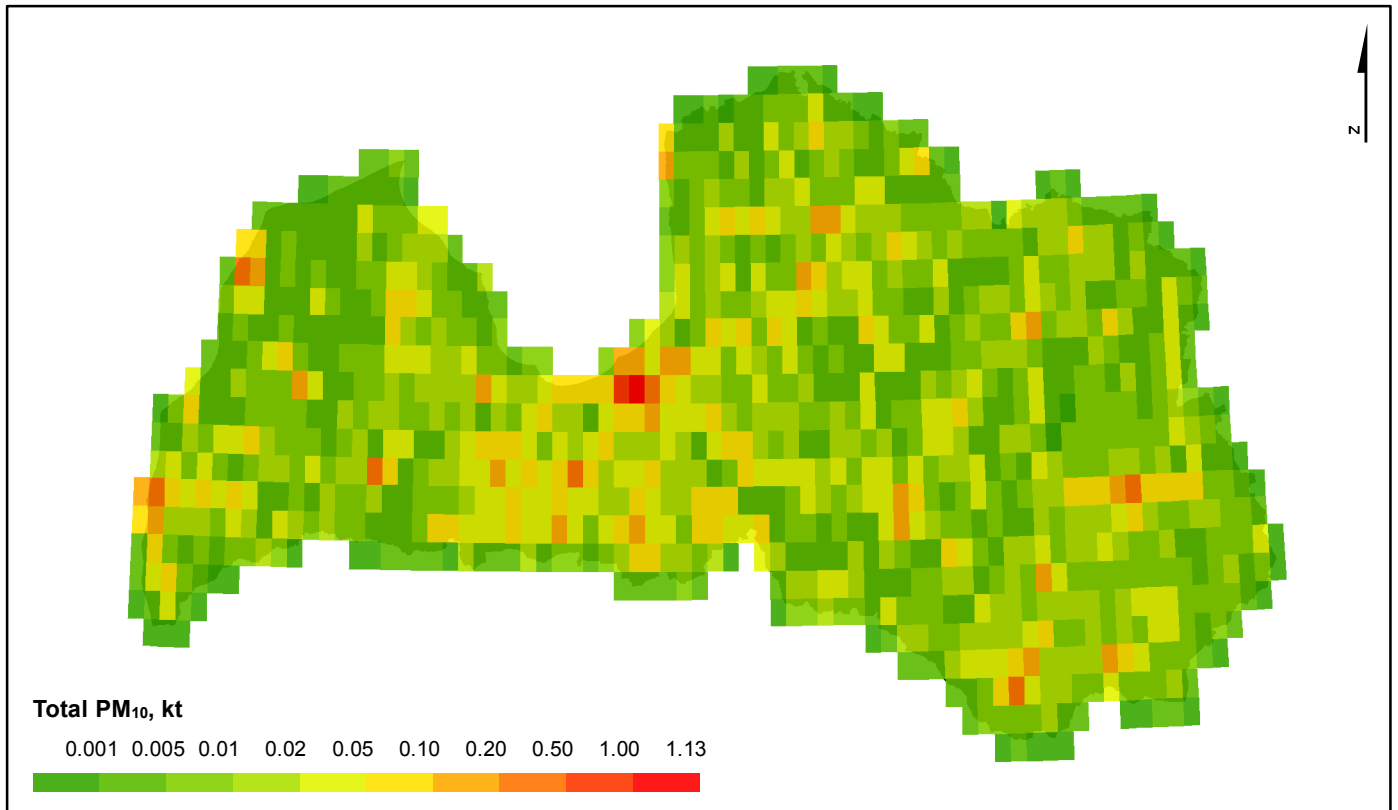
# NH<sub>3</sub> gridded emissions in 2015



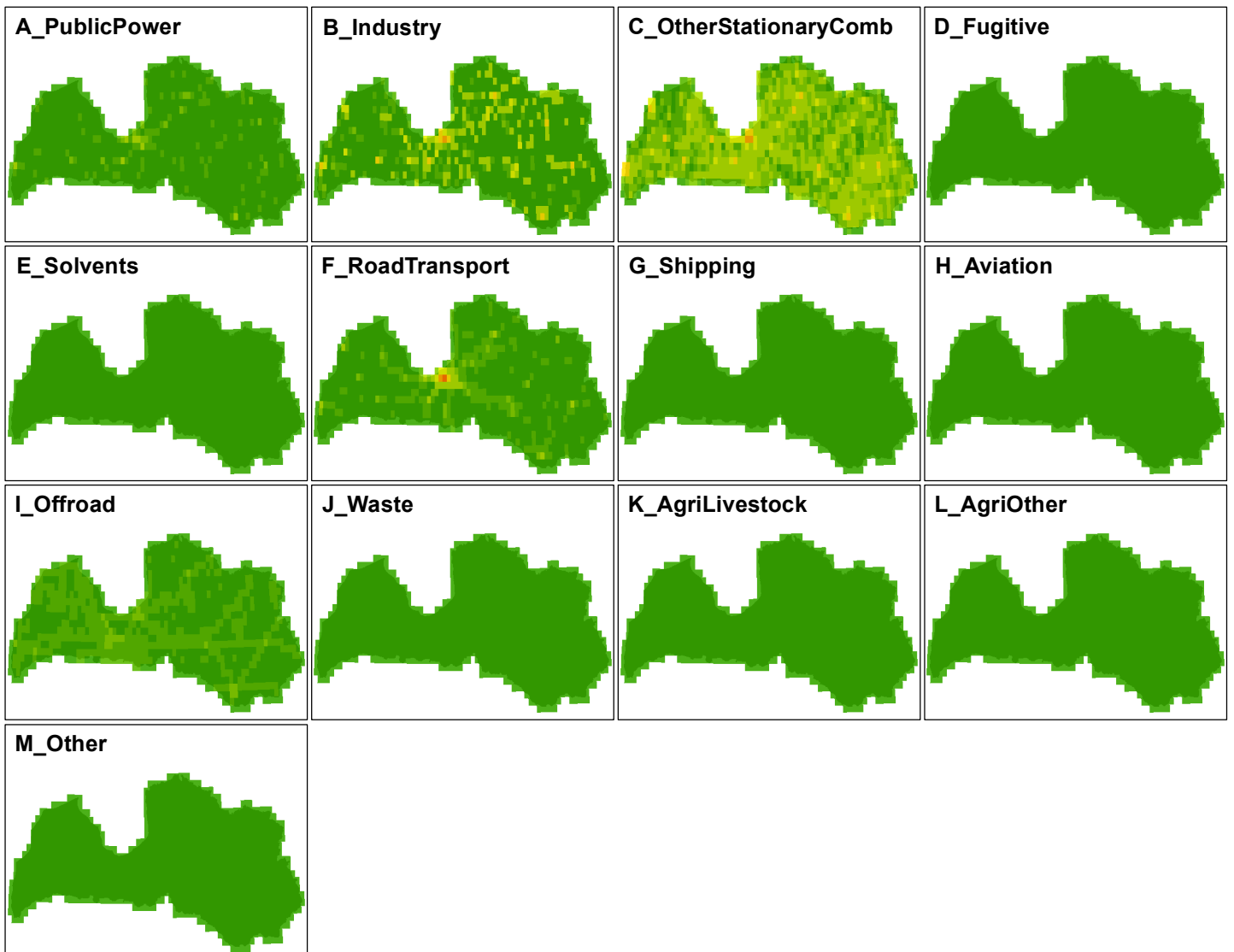
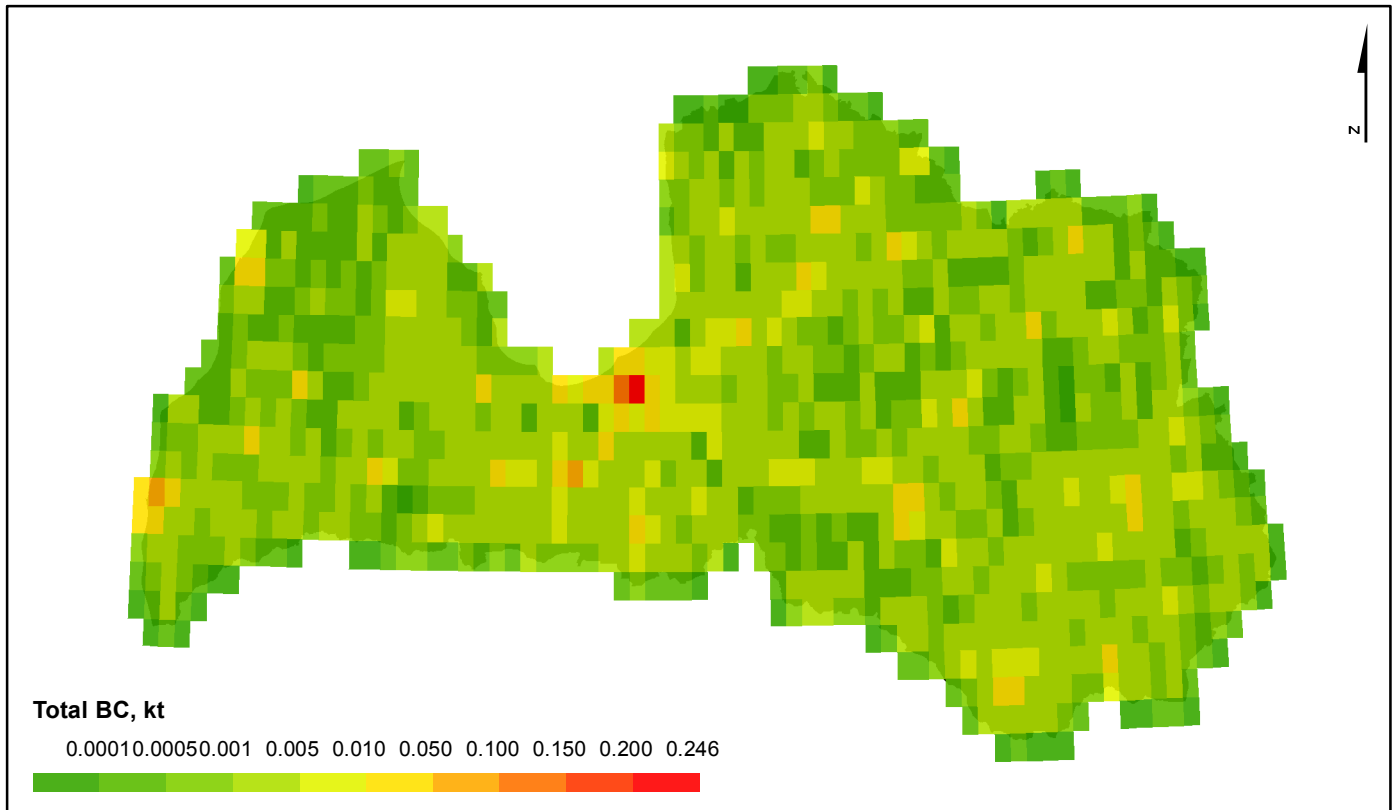
# PM<sub>2.5</sub> gridded emissions in 2015



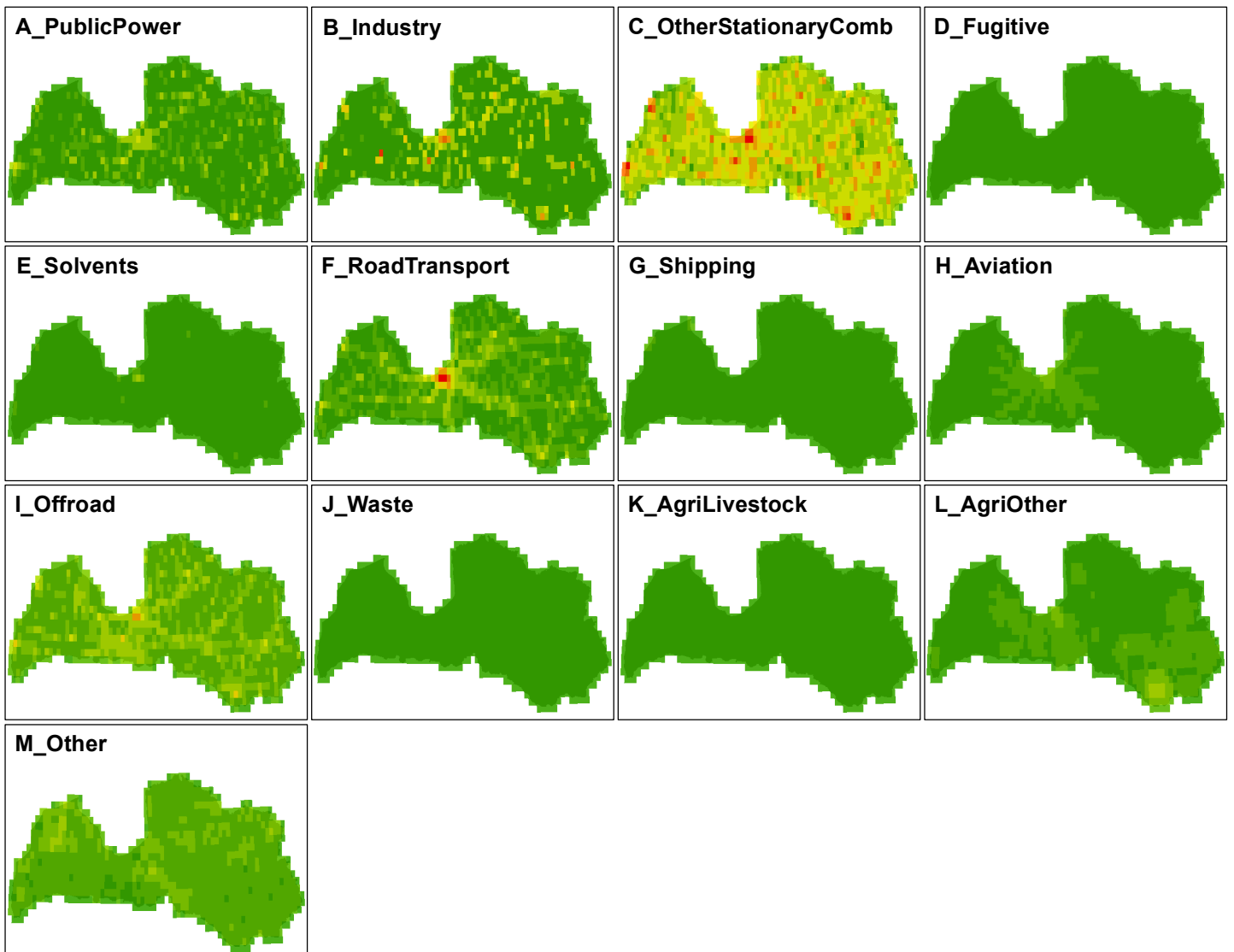
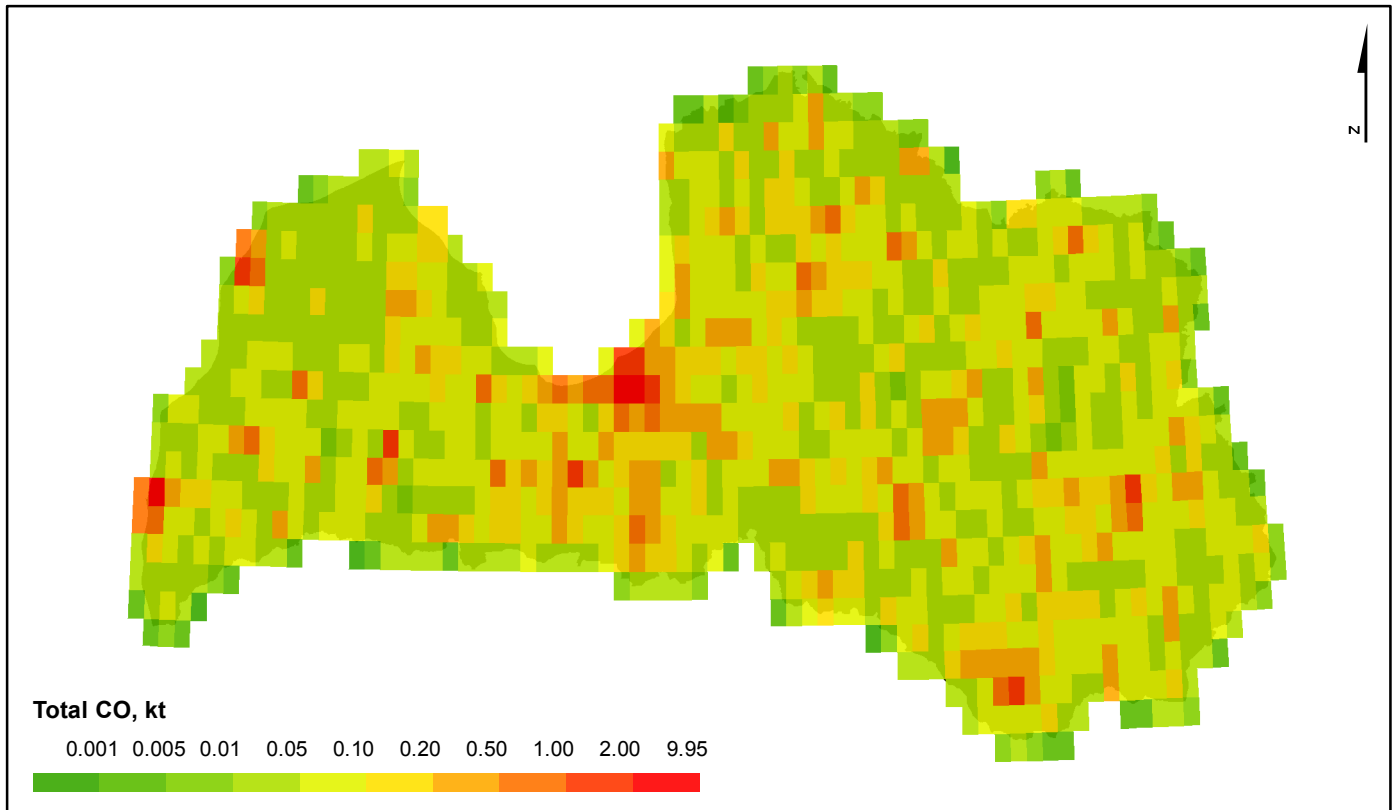
# PM<sub>10</sub> gridded emissions in 2015



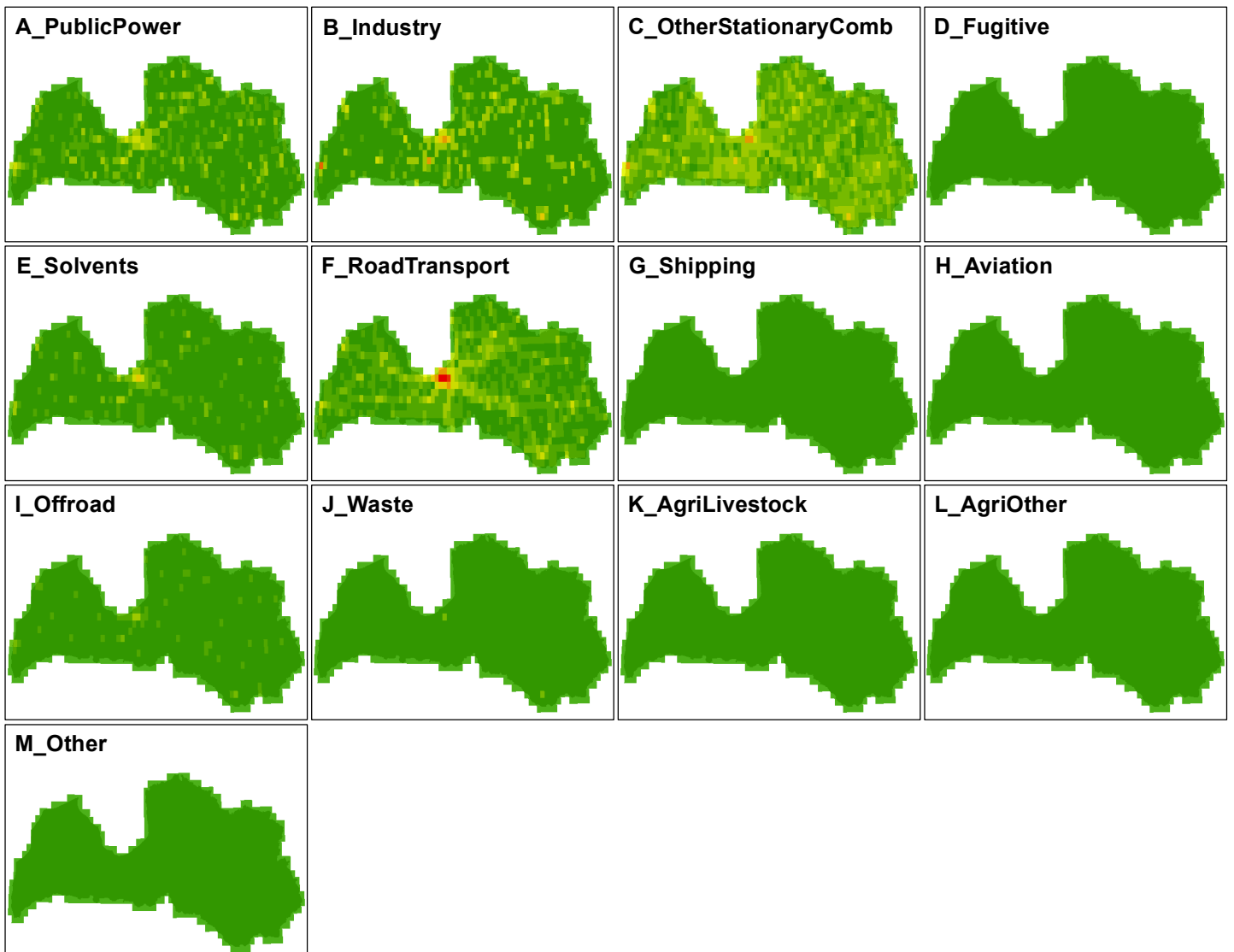
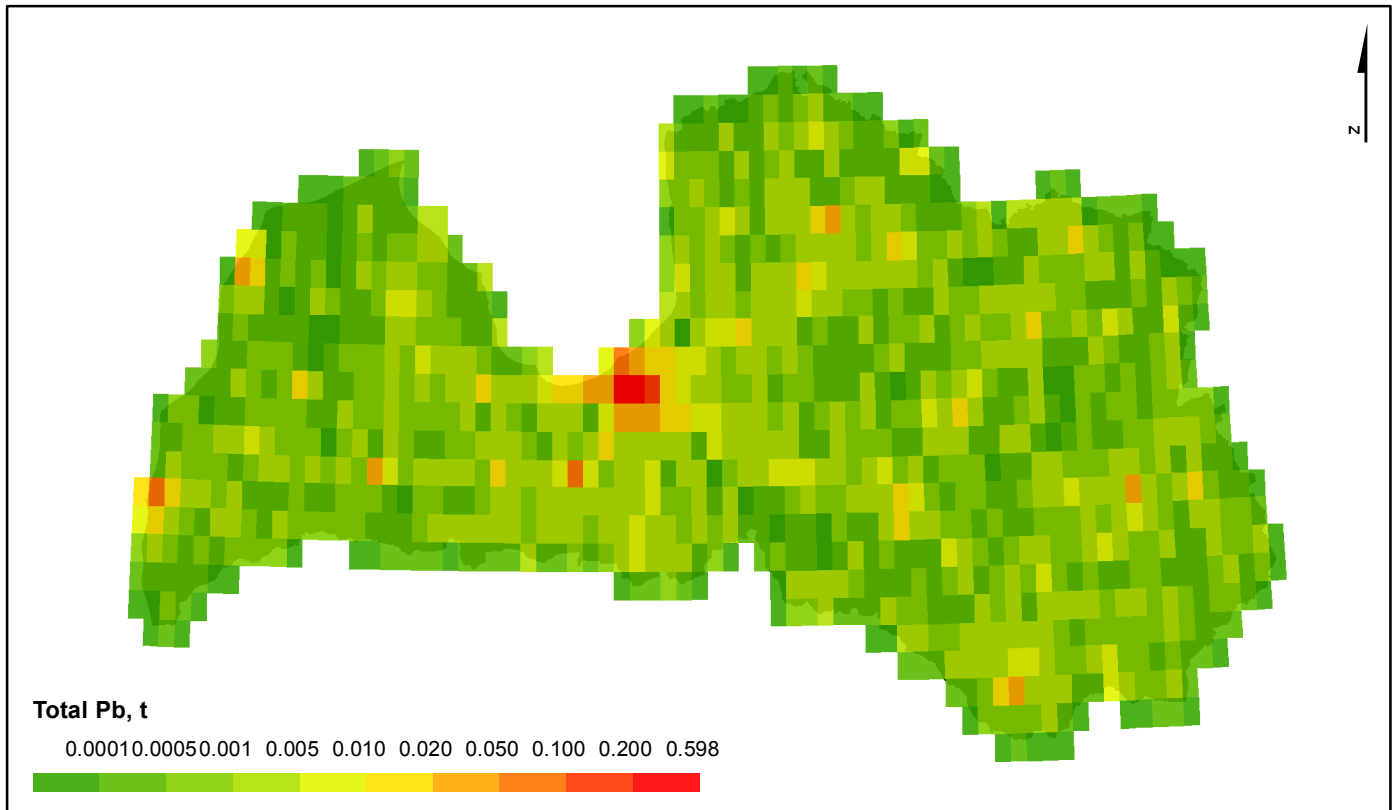
# BC gridded emissions in 2015



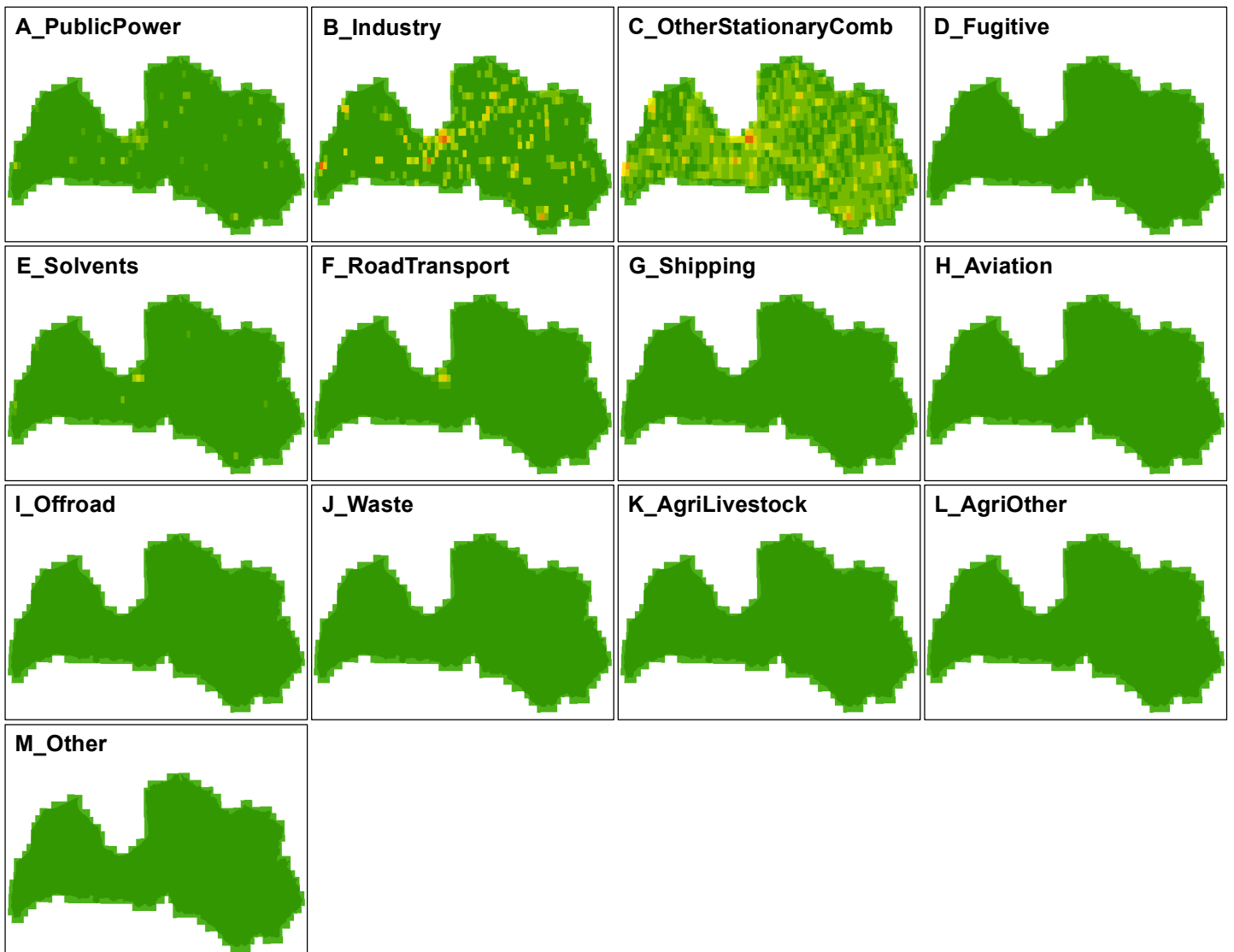
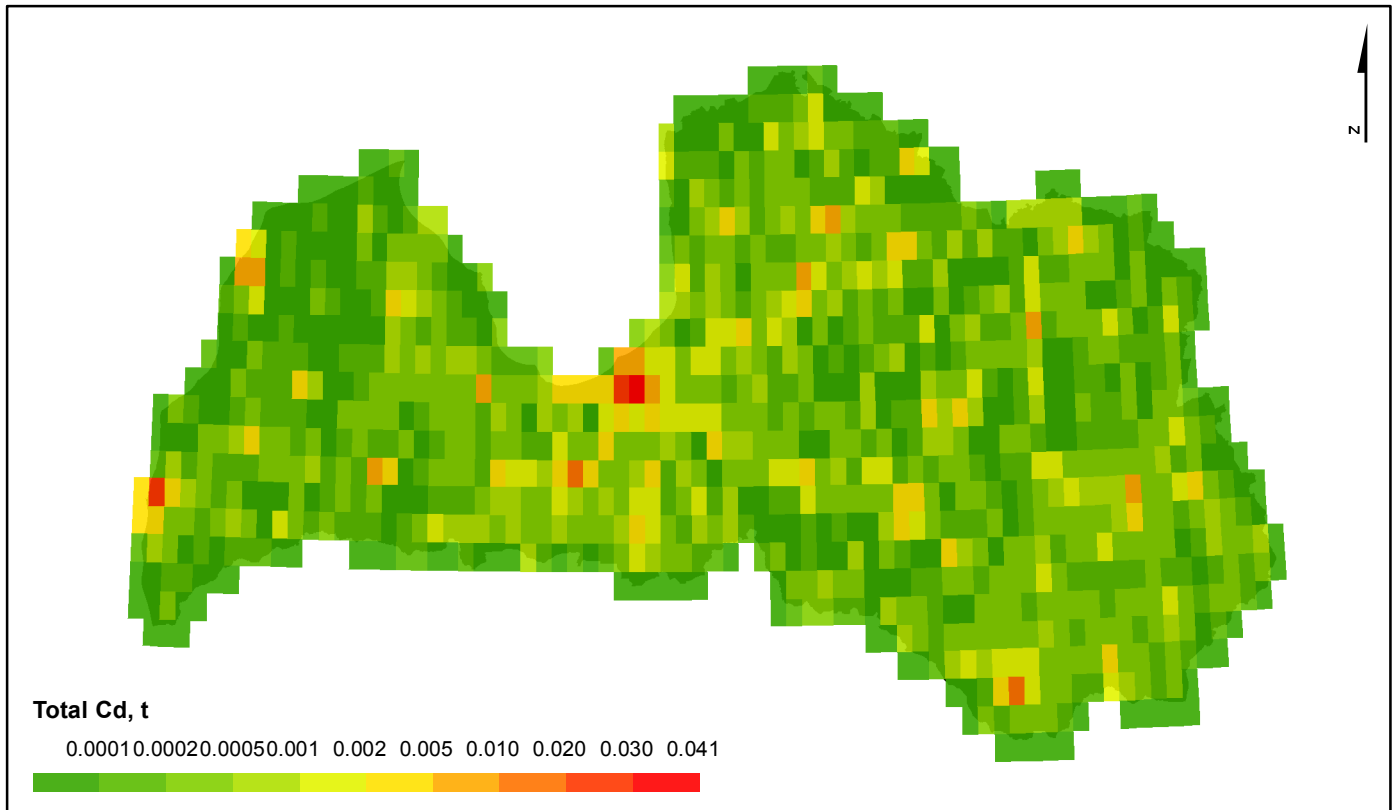
# CO gridded emissions in 2015



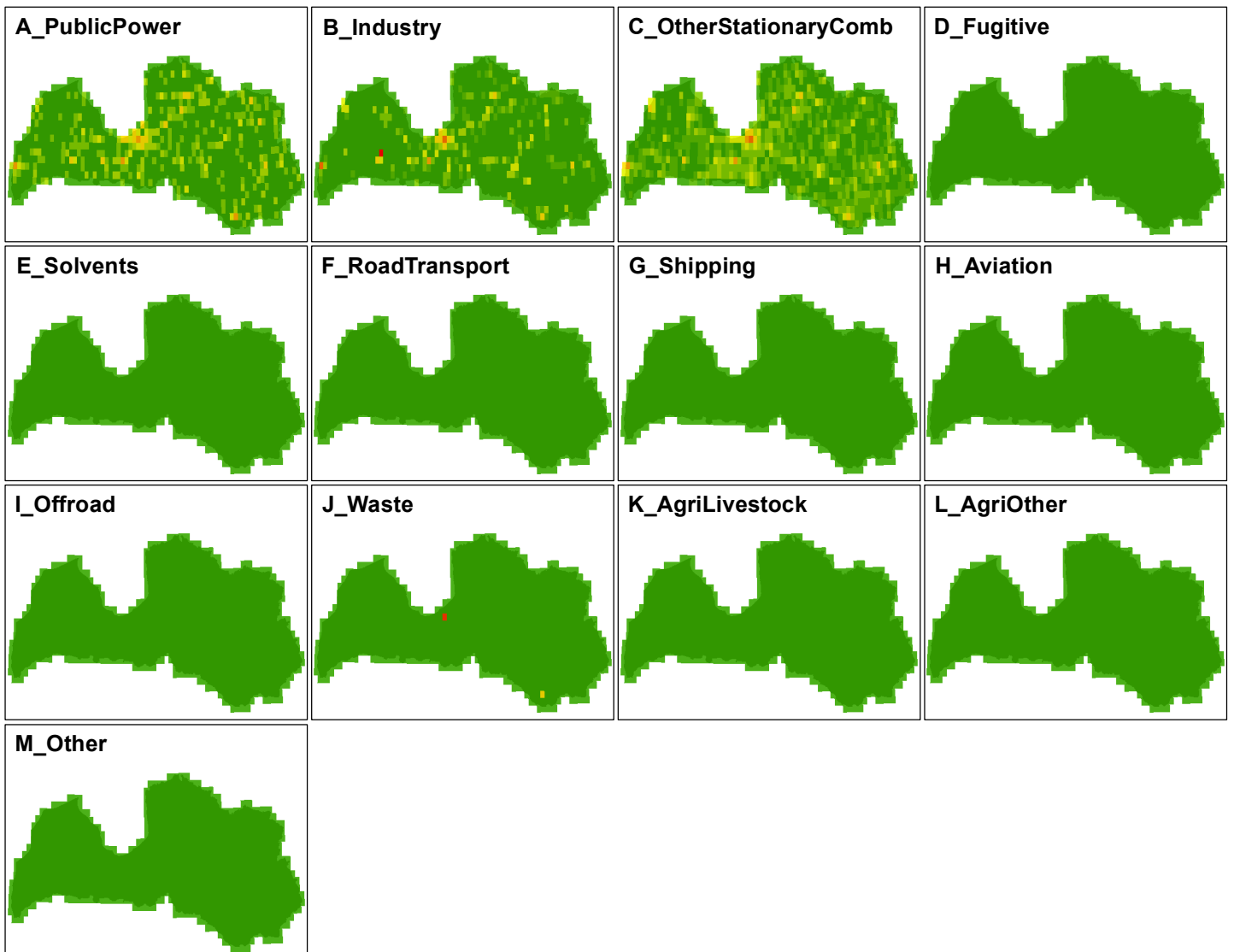
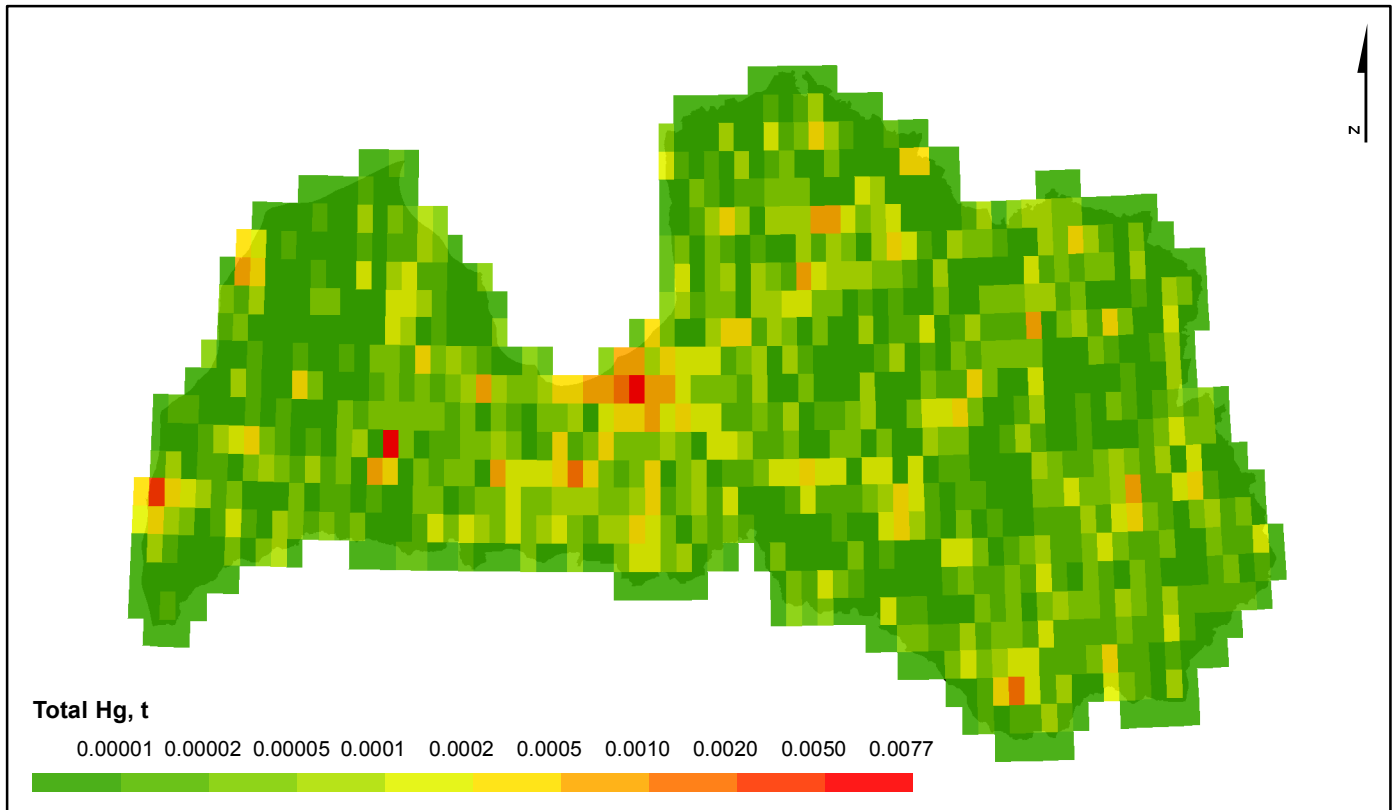
# Pb gridded emissions in 2015



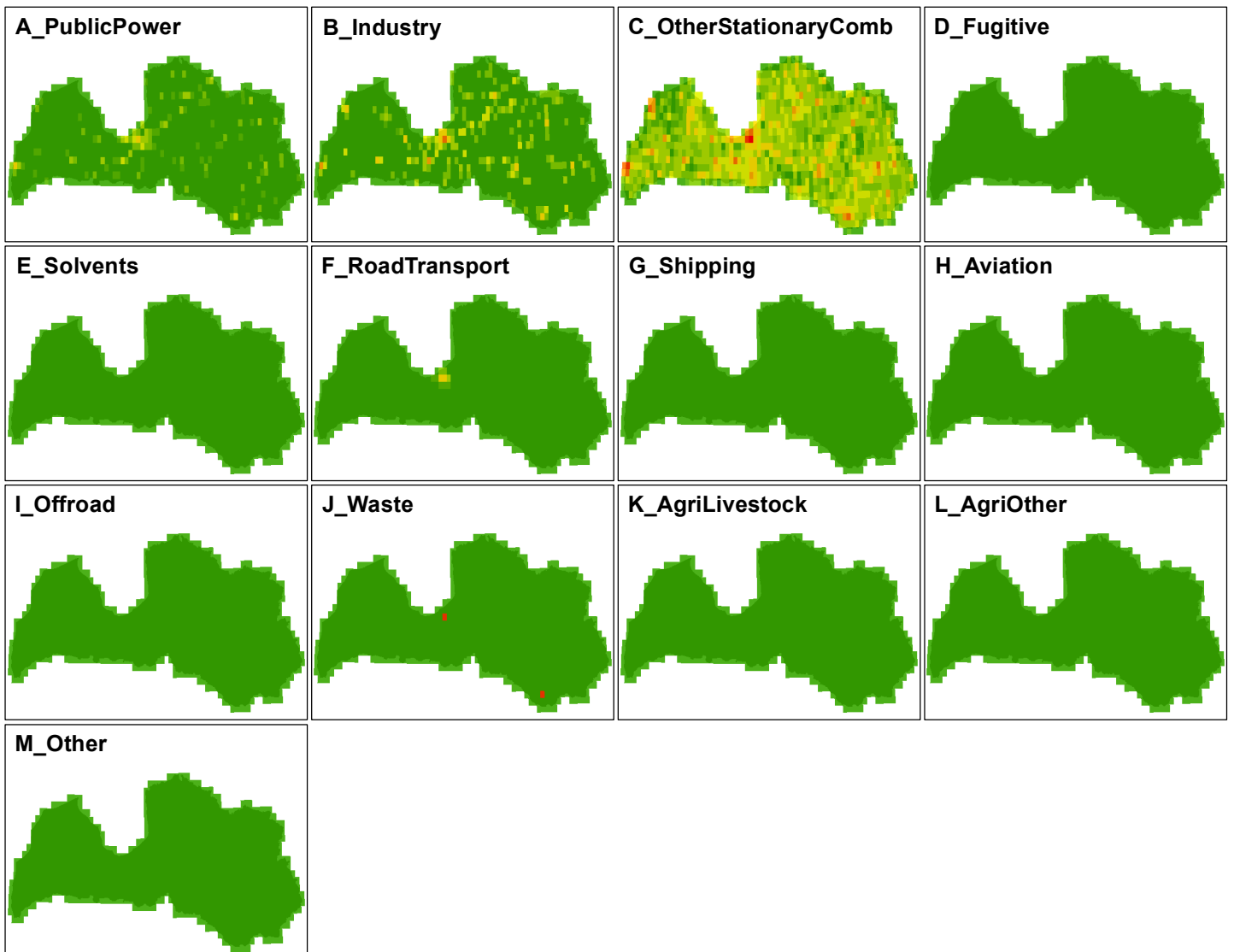
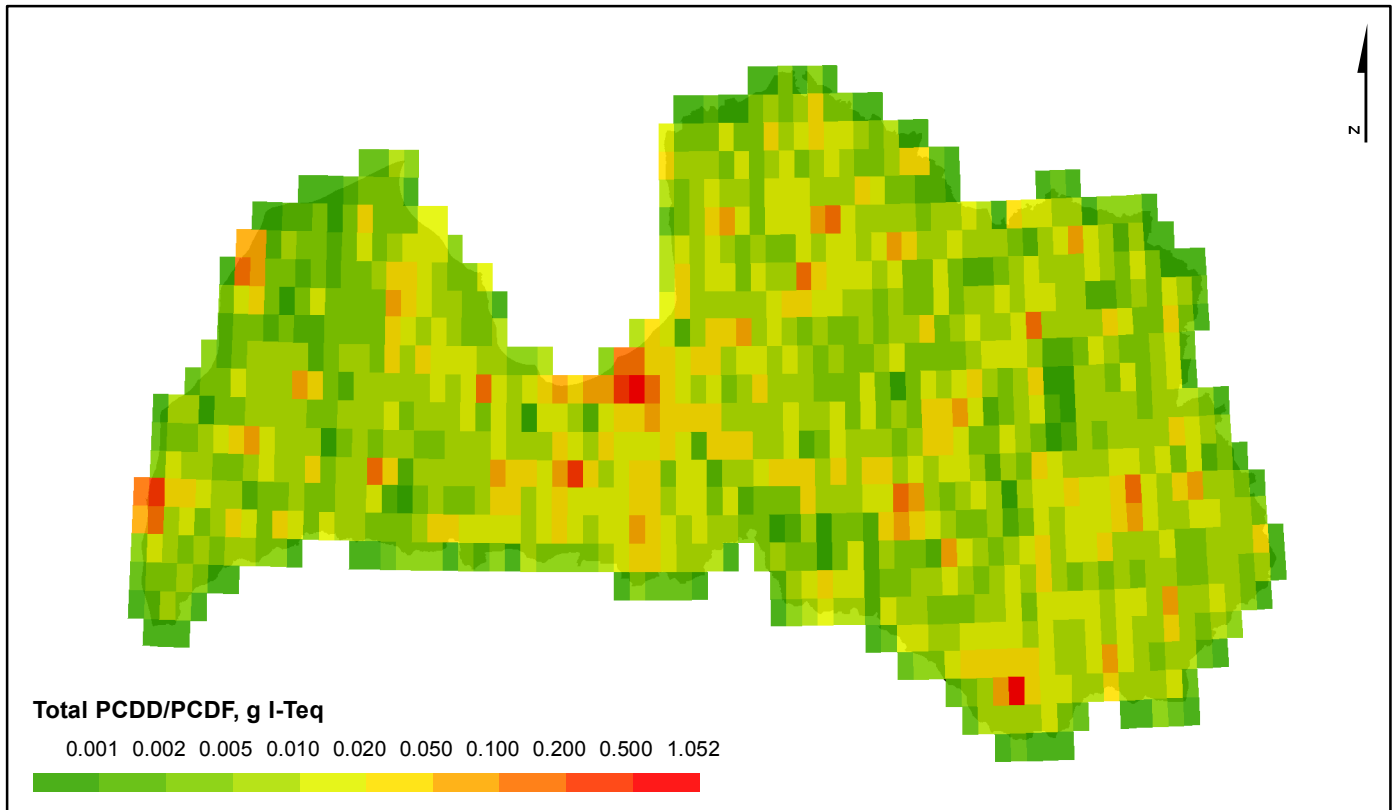
# Cd gridded emissions in 2015



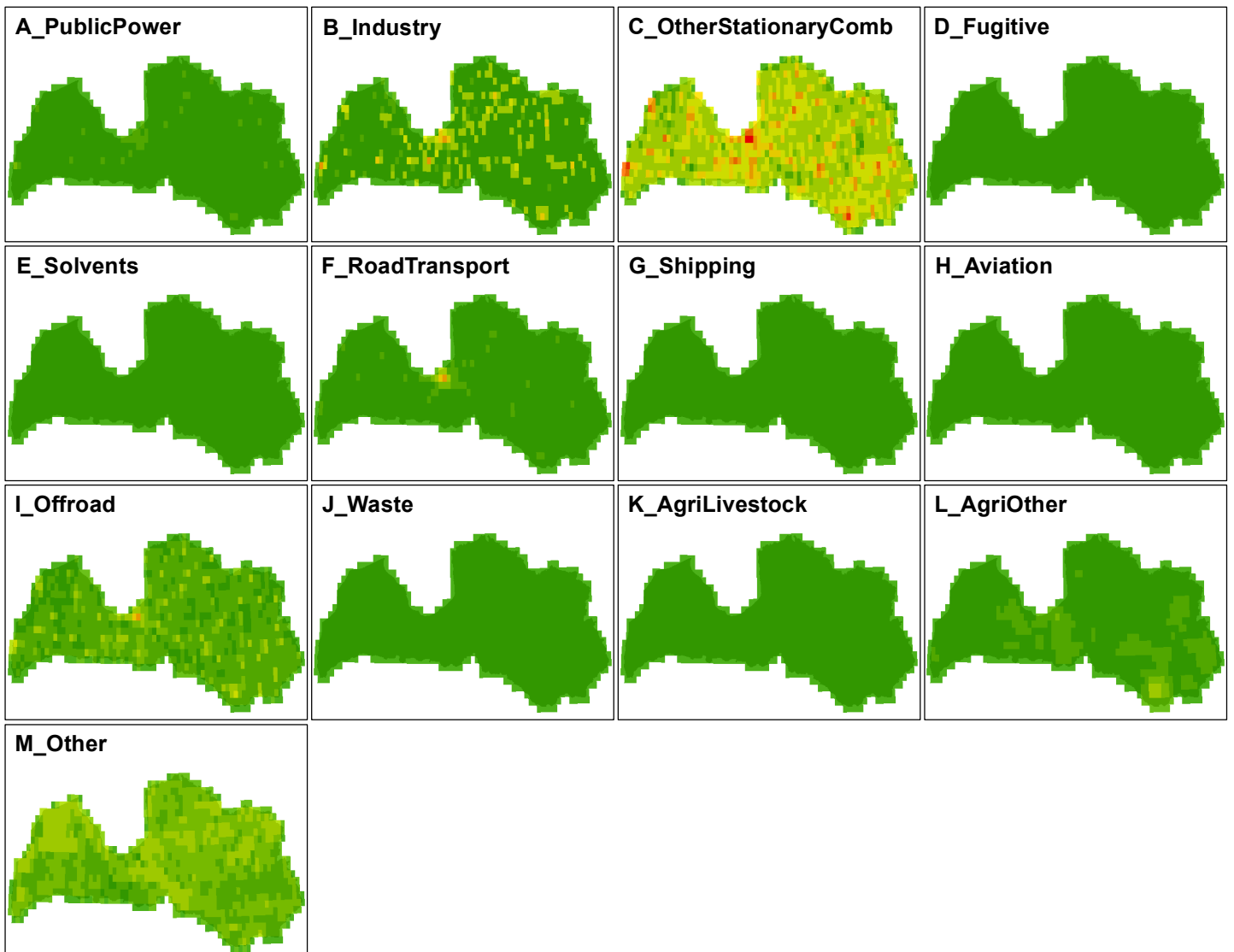
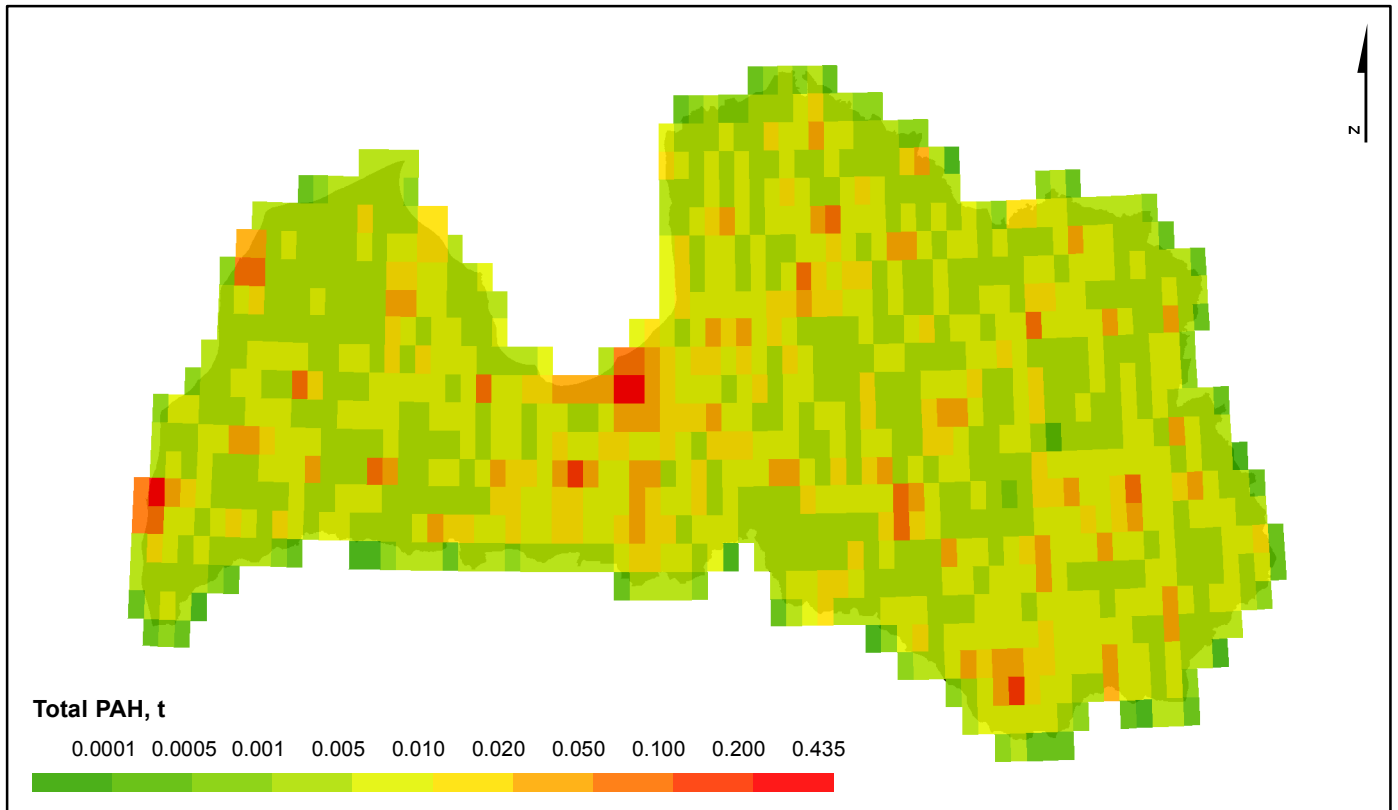
# Hg gridded emissions in 2015



# PCDD/PCDF gridded emissions in 2015



# PAH gridded emissions in 2015



# HCB gridded emissions in 2015

